



Rabbit Anti-PCDH20 antibody

SL11113R

Product Name:	PCDH20
Chinese Name:	原钙粘附蛋白20抗体
Alias:	PCD20_HUMAN; PCDH 13; PCDH 20; PCDH13; PCDH20; Protocadherin 13; Protocadherin 20; Protocadherin-13; Protocadherin-20; Protocadherin13; Protocadherin20.
Organism Species:	Rabbit
Clonality:	Polyclonal
React Species:	Human,Mouse,Rat,Horse,Rabbit,
Applications:	WB=1:500-2000ELISA=1:500-1000Flow-Cyt=1μg/Test not yet tested in other applications. optimal dilutions/concentrations should be determined by the end user.
Molecular weight:	98kDa
Cellular localization:	The cell membrane
Form:	Lyophilized or Liquid
Concentration:	1mg/ml
immunogen:	KLH conjugated synthetic peptide derived from human PCDH20:611-710/924<Extracellular>
Lsotype:	IgG
Purification:	affinity purified by Protein A
Storage Buffer:	0.01M TBS(pH7.4) with 1% BSA, 0.03% Proclin300 and 50% Glycerol.
Storage:	Store at -20 °C for one year. Avoid repeated freeze/thaw cycles. The lyophilized antibody is stable at room temperature for at least one month and for greater than a year when kept at -20°C. When reconstituted in sterile pH 7.4 0.01M PBS or diluent of antibody the antibody is stable for at least two weeks at 2-4 °C.
PubMed:	PubMed
Product Detail:	As a subfamily of the cadherin superfamily, protocadherins are cadherin-like cell adhesion proteins that contain up to seven extracellular domains and are predominantly expressed in the nervous system. Importantly, the adhesion mechanism of protocadherins is distinct from classic cadherins. Through inactivation or overexpression, several protocadherins have been implicated in a variety of cancers.

Protocadherin-20 (PCDH20), also known as protocadherin-13, is a 924 amino acid protein containing 6 cadherin domains and potentially functioning as a calcium-dependent cell-adhesion protein. In non-small cell lung cancer cell lines, a homozygous loss of PCDH20 was identified through either deletion of one allele and methylation of the other or methylation of both alleles. Hypermethylation of PCDH20 is associated with worse prognosis and clinical outcome, suggesting that PCDH20 may function as a tumor suppressor.

Function:

Potential calcium-dependent cell-adhesion protein.

Subcellular Location:

Cell membrane.

Similarity:

Contains 6 cadherin domains.

SWISS:

Q8N6Y1

Gene ID:

64881

Database links:

[Entrez Gene: 64881](#)Human

[Omir: 614449](#)Human

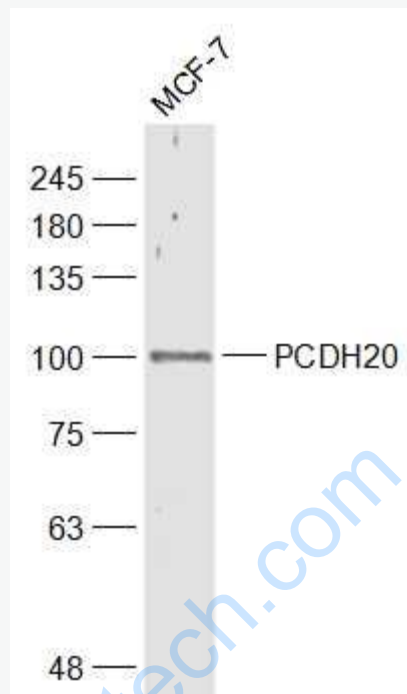
[SwissProt: Q8N6Y1](#)Human

[Unigene: 391781](#)Human

Important Note:

This product as supplied is intended for research use only, not for use in human, therapeutic or diagnostic applications.

Picture:



Sample:

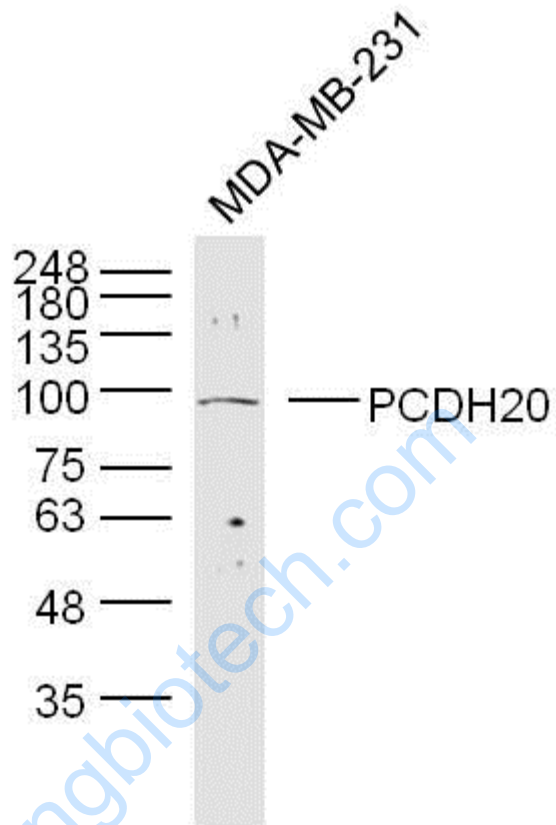
MCF-7(Human) Cell Lysate at 30 ug

Primary: Anti-PCDH20 (SL11113R) at 1/1000 dilution

Secondary: IRDye800CW Goat Anti-Rabbit IgG at 1/20000 dilution

Predicted band size: 98 kD

Observed band size: 100 kD



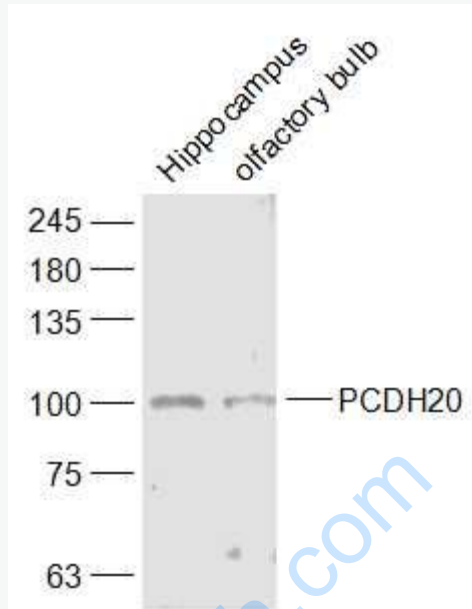
Sample: MDA-MB-231 Cell (Human) Lysate at 40 ug

Primary: Anti-PCDH20 (SL11113R) at 1/300 dilution

Secondary: IRDye800CW Goat Anti-Rabbit IgG at 1/20000 dilution

Predicted band size: 98 kD

Observed band size: 98 kD



Sample:

Hippocampus (Mouse) Lysate at 40 ug

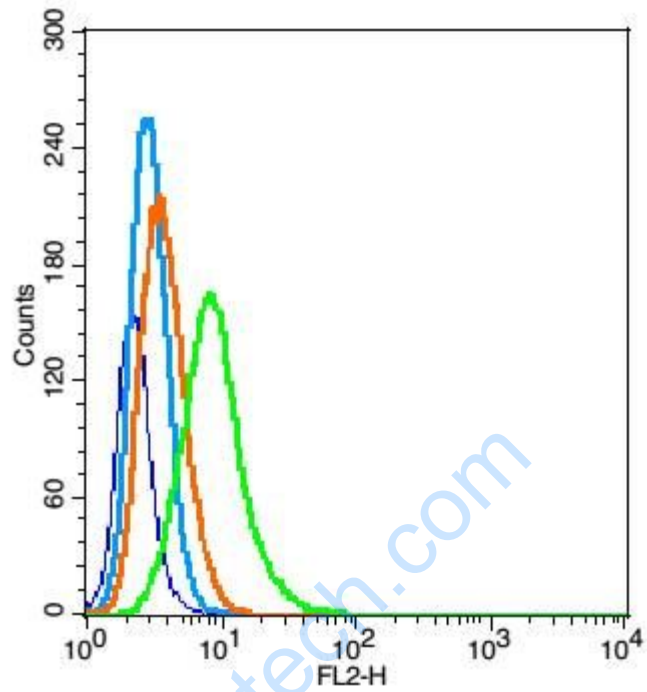
Olfactory bulb (Mouse) Lysate at 40 ug

Primary: Anti-PCDH20 (SL11113R) at 1/1000 dilution

Secondary: IRDye800CW Goat Anti-Rabbit IgG at 1/20000 dilution

Predicted band size: 98 kD

Observed band size: 100 kD



Blank control(blue): RSC96 (fixed with 2% paraformaldehyde (10 min)).

Primary Antibody:Rabbit Anti- PCDH20 antibody(SL11113R), Dilution: 1 μ g in 100 μ L 1X PBS containing 0.5% BSA;

Isotype Control Antibody: Rabbit IgG(orange) ,used under the same conditions);

Secondary Antibody: Goat anti-rabbit IgG-PE(white blue), Dilution: 1:200 in 1 X PBS containing 0.5% BSA.