



## Rabbit Anti-PCDH8 antibody

SL11114R

|                               |   |
|-------------------------------|---|
| <b>Product Name:</b>          | PCDH8   |
| <b>Chinese Name:</b>          | 原钙粘附蛋白8抗体   |
| <b>Alias:</b>                 | Arcadlin; PAPC; PCDH 8; Protocadherin 8; Protocadherin8; PCDH8_HUMAN.   |
| <b>Organism Species:</b>      | Rabbit  |
| <b>Clonality:</b>             | Polyclonal  |
| <b>React Species:</b>         | Human,Mouse,Rat,Pig,Cow,Rabbit,Goose,Sheep,Chimpanzee,  |
| <b>Applications:</b>          | WB=1:500-2000ELISA=1:500-1000IHC-P=1:400-800IHC-F=1:400-800ICC=1:100-500IF=1:100-500 (Paraffin sections need antigen repair)<br>not yet tested in other applications.<br>optimal dilutions/concentrations should be determined by the end user.   |
| <b>Molecular weight:</b>      | 110kDa  |
| <b>Cellular localization:</b> | The cell membrane   |
| <b>Form:</b>                  | Lyophilized or Liquid   |
| <b>Concentration:</b>         | 1mg/ml  |
| <b>immunogen:</b>             | KLH conjugated synthetic peptide derived from human PCDH8:51-150/1070   |
| <b>Lsotype:</b>               | IgG   |
| <b>Purification:</b>          | affinity purified by Protein A  |
| <b>Storage Buffer:</b>        | 0.01M TBS(pH7.4) with 1% BSA, 0.03% Proclin300 and 50% Glycerol.  |
| <b>Storage:</b>               | Store at -20 °C for one year. Avoid repeated freeze/thaw cycles. The lyophilized antibody is stable at room temperature for at least one month and for greater than a year when kept at -20°C. When reconstituted in sterile pH 7.4 0.01M PBS or diluent of antibody the antibody is stable for at least two weeks at 2-4 °C.   |
| <b>PubMed:</b>                | <a href="#">PubMed</a>  |
| <b>Product Detail:</b>        | Protocadherins are a large family of cadherin-like cell adhesion proteins that are involved in the establishment and maintenance of neuronal connections in the brain. There are three protocadherin gene clusters, designated alpha, beta and gamma, all of which contain multiple tandemly arranged genes. PCDH8 (protocadherin-8), also known as Arcadlin or PAPC, is a 1,070 amino acid single-pass type I membrane protein that contains six cadherin domains and belongs to the protocadherin family. Localized to the cell membrane and expressed specifically in fetal and adult brain, PCDH8 is thought to |

play a role in cell adhesion events in the central nervous system (CNS). PCDH8 is inactivated or silenced in breast cancer, suggesting a possible role in tumor suppression. Two isoforms of PCDH8 that differ in their cytoplasmic tails are expressed due to alternative splicing events.

**Function:**

PCDH8 (Protocadherin 8) belongs to the protocadherin gene family, a subfamily of the cadherin superfamily. It is thought to function in cell-adhesion in a calcium-dependent manner. It is predominantly expressed in brain, localizing to synaptic junctions.

**Subunit:**

The N-terminal extracellular domain forms homophilic interactions; these interactions activate p38 MAPK via TAOK2 and trigger endocytosis (By similarity). Interacts with CDH2; this interaction may lead to CDH2 cointernalization (By similarity). Interacts with CDH11 (By similarity). Interacts with TAOK2 (By similarity).

**Subcellular Location:**

Cell Membrane. Single-pass type I membrane protein.

**Similarity:**

Contains 6 cadherin domains.

**SWISS:**

O95206

**Gene ID:**

5100

**Database links:**

[Entrez Gene: 5100](#)Human

[Oimim: 603580](#)Human

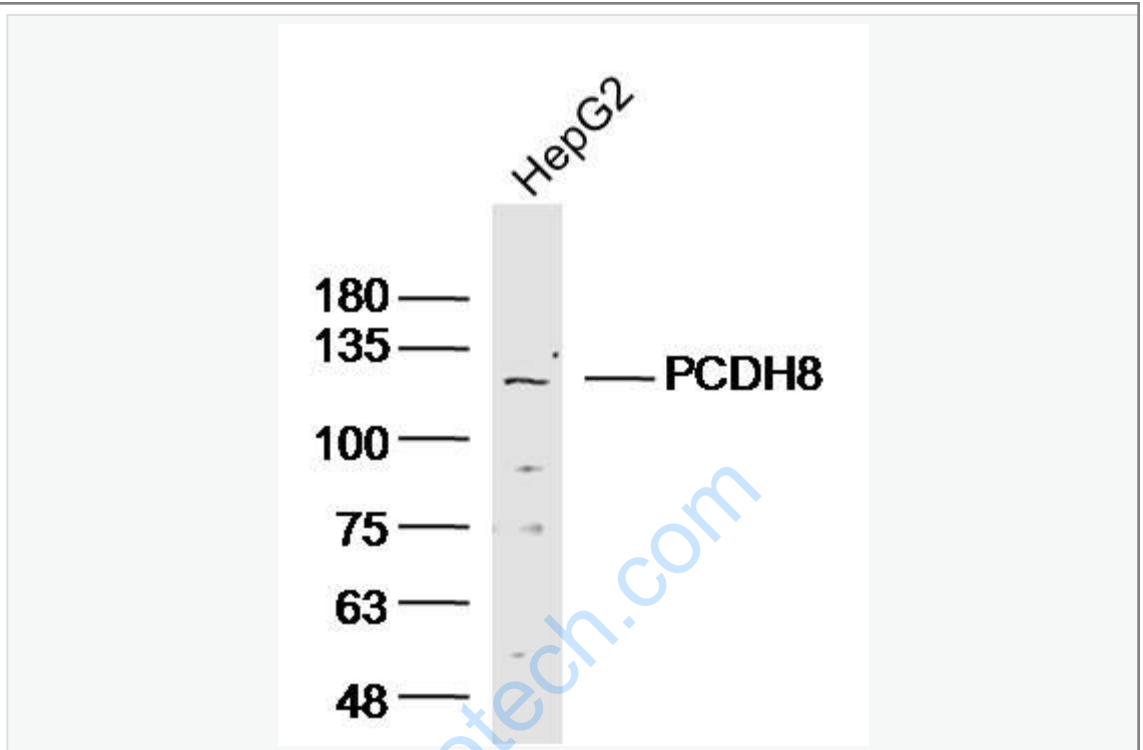
[SwissProt: O95206](#)Human

[Unigene: 19492](#)Human

**Important Note:**

This product as supplied is intended for research use only, not for use in human, therapeutic or diagnostic applications.

Picture:



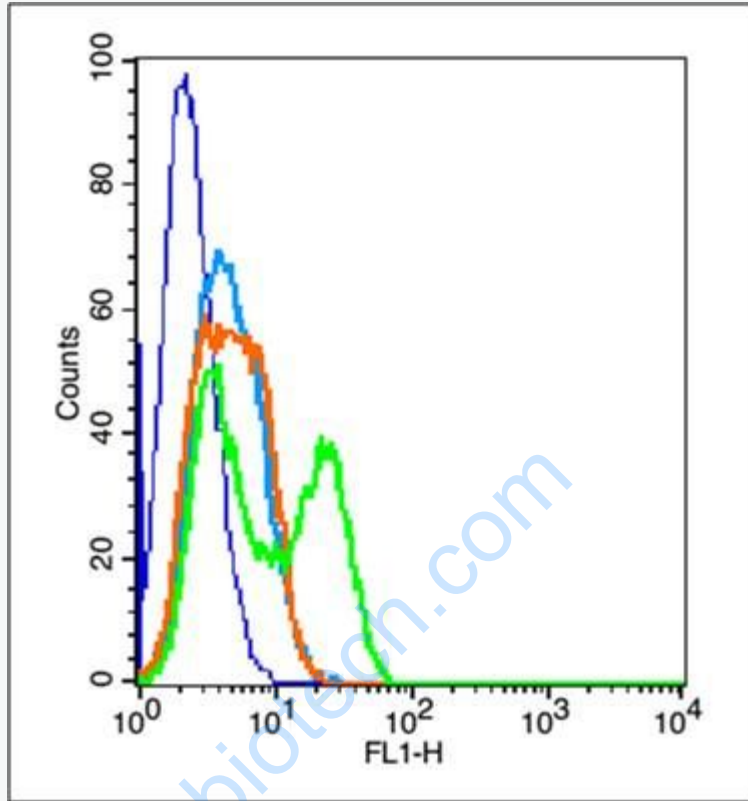
Sample:HepG2 (Human)cell Lysate at 40 ug

Primary: Anti-PCDH8(SL11114R)at 1/300 dilution

Secondary: IRDye800CW Goat Anti-RabbitIgG at 1/20000 dilution

Predicted band size: 110kD

Observed band size: 110kD



Blank control (blue line): U 2OS (fixed with 2% paraformaldehyde (10 min)).

Primary Antibody (green line): Rabbit Anti-PCDH8 antibody (SL11114R), Dilution: 1  $\mu$ g / 10<sup>6</sup> cells;

Isotype Control Antibody (orange line): Rabbit IgG .

Secondary Antibody (white blue line): Goat anti-rabbit IgG-FITC, Dilution: 1  $\mu$ g / test.