



## Rabbit Anti-PCDHA1 antibody

SL11115R

<b>Product Name:</b>	PCDHA1
<b>Chinese Name:</b>	原钙粘附蛋白 $\alpha$ 1抗体
<b>Alias:</b>	KIAA0345 like 13; PCDH alpha1; PCDHA 1; Protocadherin alpha 1; PCDA1_HUMAN.
<b>Organism Species:</b>	Rabbit
<b>Clonality:</b>	Polyclonal
<b>React Species:</b>	Human,Mouse,Rat,Dog,
<b>Applications:</b>	ELISA=1:500-1000IHC-P=1:400-800IHC-F=1:400-800ICC=1:100-500IF=1:100-500 (Paraffin sections need antigen repair) not yet tested in other applications. optimal dilutions/concentrations should be determined by the end user.
<b>Molecular weight:</b>	100kDa
<b>Cellular localization:</b>	The cell membraneSecretory protein
<b>Form:</b>	Lyophilized or Liquid
<b>Concentration:</b>	1mg/ml
<b>immunogen:</b>	KLH conjugated synthetic peptide derived from human PCDHA1:261-360/950<Extracellular>
<b>Lsotype:</b>	IgG
<b>Purification:</b>	affinity purified by Protein A
<b>Storage Buffer:</b>	0.01M TBS(pH7.4) with 1% BSA, 0.03% Proclin300 and 50% Glycerol.
<b>Storage:</b>	Store at -20 °C for one year. Avoid repeated freeze/thaw cycles. The lyophilized antibody is stable at room temperature for at least one month and for greater than a year when kept at -20°C. When reconstituted in sterile pH 7.4 0.01M PBS or diluent of antibody the antibody is stable for at least two weeks at 2-4 °C.
<b>PubMed:</b>	<a href="#">PubMed</a>
<b>Product Detail:</b>	Protocadherins are a large family of cadherin-like cell adhesion proteins that are involved in the establishment and maintenance of neuronal connections in the brain. There are three protocadherin gene clusters, designated alpha, beta and gamma, all of which contain multiple tandemly arranged genes. PCDHA1 (protocadherin alpha 1), also known as PCDH-ALPHA1, is a 950 amino acid, single-pass type I membrane protein

that contains six cadherin domains. Functioning as a potential calcium-dependent cell-adhesion protein, PCDHA1 has been suspected to play a role in the creation and maintenance of neuronal connections. Three isoforms of PCDHA1 exist due to alternative splicing events.

**Function:**

PCDHA1 (Protocadherin alpha 1) is a member of the protocadherin family, a subgroup of the cadherin superfamily. Protocadherins are neural cadherin-like cell adhesion proteins that are integral membrane proteins. Their specific functions are unknown but they most likely play a critical role in the establishment and function of specific neuronal connections in the brain. PCDHA1 is one of fifteen tandemly arranged genes within the alpha cluster of protocadherin genes on 5q31.

**Subcellular Location:**

Isoform 1: Cell membrane; Single-pass type I membrane protein. Isoform 2: Secreted.

**Similarity:**

Contains 6 cadherin domains.

**SWISS:**

Q9Y5I3

**Gene ID:**

56147

**Database links:**

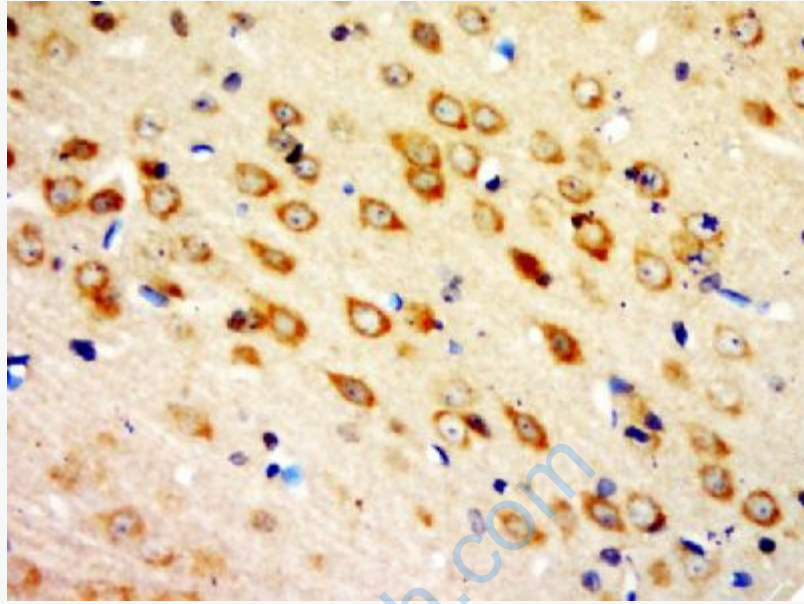
[Entrez Gene: 56147](#)Human

[Omin: 606307](#)Human

[SwissProt: Q9Y5I3](#)Human

**Important Note:**

This product as supplied is intended for research use only, not for use in human, therapeutic or diagnostic applications.



**Picture:**

Paraformaldehyde-fixed, paraffin embedded (rat brain); Antigen retrieval by boiling in sodium citrate buffer (pH6.0) for 15min; Block endogenous peroxidase by 3% hydrogen peroxide for 20 minutes; Blocking buffer (normal goat serum) at 37°C for 30min; Antibody incubation with (PCDHA1) Polyclonal Antibody, Unconjugated (SL11115R) at 1:5000 overnight at 4°C, followed by a conjugated secondary (sp-0023) for 20 minutes and DAB staining.