



Rabbit Anti-PCDHA10/CNRN8 antibody

SL11123R

Product Name:	PCDHA10/CNRN8
Chinese Name:	钙粘蛋白相关神经受体8抗体
Alias:	Cadherin related neuronal receptor 8; CNR 8; Cnr3; CNR8; CNRN 8; CNRN-8; CNRS 8; CNRS8; CRNR 8; Cmr3; CRNR8; Ortholog to mouse CNR8; PCDH alpha10; PCDHA 10; Pcdha14; PCDHALPHA10; Protocadherin alpha 10; rCNRv10; PCDA_A HUMAN.
Organism Species:	Rabbit
Clonality:	Polyclonal
React Species:	Human,Mouse,Rat,Chicken,
Applications:	WB=1:500-2000ELISA=1:500-1000IHC-P=1:400-800IHC-F=1:400-800ICC=1:100-500IF=1:100-500 (Paraffin sections need antigen repair) not yet tested in other applications. optimal dilutions/concentrations should be determined by the end user.
Molecular weight:	100kDa
Cellular localization:	The cell membraneSecretory protein
Form:	Lyophilized or Liquid
Concentration:	1mg/ml
immunogen:	KLH conjugated synthetic peptide derived from human PCDHA10/CNRN8:301-400/948<Extracellular>
Lsotype:	IgG
Purification:	affinity purified by Protein A
Storage Buffer:	0.01M TBS(pH7.4) with 1% BSA, 0.03% Proclin300 and 50% Glycerol.
Storage:	Store at -20 °C for one year. Avoid repeated freeze/thaw cycles. The lyophilized antibody is stable at room temperature for at least one month and for greater than a year when kept at -20°C. When reconstituted in sterile pH 7.4 0.01M PBS or diluent of antibody the antibody is stable for at least two weeks at 2-4 °C.
PubMed:	PubMed
Product Detail:	Protocadherins are a large family of cadherin-like cell adhesion proteins that are involved in the establishment and maintenance of neuronal connections in the brain. There are three protocadherin gene clusters, designated alpha, beta and gamma, all of

which contain multiple tandemly arranged genes. These genes generate thousands of different protocadherin proteins through alternative promoter usage and cis-alternative splicing. PCDHA and PCDHG family members form oligomers, which also increases the diversity of PCDH proteins at the cell surface. All three gene clusters, PCDHA, PCDHB, and PCDHG show upregulated expression during brain development, and PCDHA is subsequently downregulated by myelination. Expression of all three clusters continues in the olfactory bulb, hippocampus and cerebellum until adulthood. Members of the PCDH family are potential targets in schizophrenia and bipolar disorder pathogenesis. PCDHA10 produces at least three isoforms by alternative splicing.

Function:

Potential calcium-dependent cell-adhesion protein. May be involved in the establishment and maintenance of specific neuronal connections in the brain.

Subcellular Location:

Cell membrane; Single-pass type I membrane protein. Isoform 2: Secreted.

Similarity:

Contains 6 cadherin domains.

SWISS:

Q9Y5I2

Gene ID:

56139

Database links:

[Entrez Gene: 56139](#)Human

[Entrez Gene: 12943](#)Mouse

[Entrez Gene: 116778](#)Rat

[Omim: 606316](#)Human

[SwissProt: Q5DRF4](#)Chimpanzee

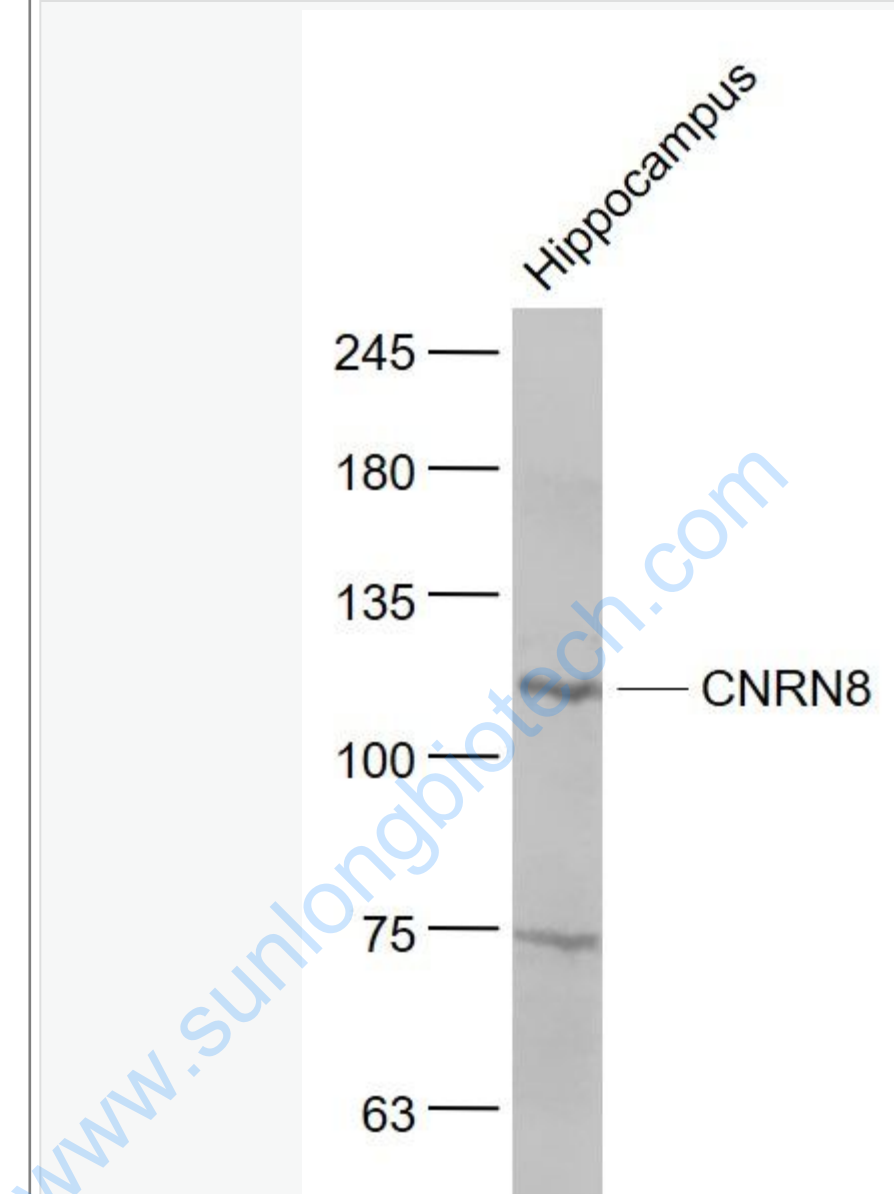
[SwissProt: Q9Y5I2](#)Human

[Unigene: 199343](#)Human

Important Note:

This product as supplied is intended for research use only, not for use in human, therapeutic or diagnostic applications.

Picture:



Sample:

Hippocampus (Mouse) Lysate at 40 ug

Primary: Anti- PCDHA10/CNRN8 (SL11123R) at 1/1000 dilution

Secondary: IRDye800CW Goat Anti-Rabbit IgG at 1/20000 dilution

Predicted band size: 100 kD

	Observed band size: 115 kD
--	----------------------------

www.sunlongbiotech.com