



## Rabbit Anti-PCDHA11 antibody

SL11124R

<b>Product Name:</b>	PCDHA11
<b>Chinese Name:</b>	原钙粘蛋白11抗体
<b>Alias:</b>	PCDHA 11; PCDHA-11; Protocadherin alpha-11; Protocadherin alpha 11; PCDAB_HUMAN.
<b>Organism Species:</b>	Rabbit
<b>Clonality:</b>	Polyclonal
<b>React Species:</b>	Human,Mouse,Rat,Dog,Cow,Horse,Sheep,
<b>Applications:</b>	WB=1:500-2000ELISA=1:500-1000IHC-P=1:400-800IHC-F=1:400-800ICC=1:100-500IF=1:100-500 (Paraffin sections need antigen repair) not yet tested in other applications. optimal dilutions/concentrations should be determined by the end user.
<b>Molecular weight:</b>	100kDa
<b>Cellular localization:</b>	The cell membrane
<b>Form:</b>	Lyophilized or Liquid
<b>Concentration:</b>	1mg/ml
<b>immunogen:</b>	KLH conjugated synthetic peptide derived from human PCDHA11:351-450/949<Extracellular>
<b>Lsotype:</b>	IgG
<b>Purification:</b>	affinity purified by Protein A
<b>Storage Buffer:</b>	0.01M TBS(pH7.4) with 1% BSA, 0.03% Proclin300 and 50% Glycerol.
<b>Storage:</b>	Store at -20 °C for one year. Avoid repeated freeze/thaw cycles. The lyophilized antibody is stable at room temperature for at least one month and for greater than a year when kept at -20°C. When reconstituted in sterile pH 7.4 0.01M PBS or diluent of antibody the antibody is stable for at least two weeks at 2-4 °C.
<b>PubMed:</b>	<a href="#">PubMed</a>
<b>Product Detail:</b>	Protocadherins are a large family of cadherin-like cell adhesion proteins that are involved in the establishment and maintenance of neuronal connections in the brain. There are three protocadherin (PCDH) gene clusters, designated alpha, beta and gamma, all of which contain multiple tandemly arranged genes. The protein products of PCDH-alpha genes interact with Integrin $\beta$ 1 to promote cell adhesion and form oligomers with

PCDH-gamma proteins at specific membrane sites. PCDHA11 is a 949 amino acid single-pass transmembrane protein that contains six cadherin domains and functions as a potential calcium-dependent cell-adhesion protein, possibly playing a role in the creation and maintenance of neuronal connections. There are two isoforms of PCDHA11 that are produced as a result of alternative splicing events.

**Function:**

Potential calcium-dependent cell-adhesion protein. May be involved in the establishment and maintenance of specific neuronal connections in the brain.

**Subcellular Location:**

Cell membrane; Single-pass type I membrane protein (By similarity).

**Similarity:**

Contains 6 cadherin domains.

**SWISS:**

Q9Y511

**Gene ID:**

56138

**Database links:**

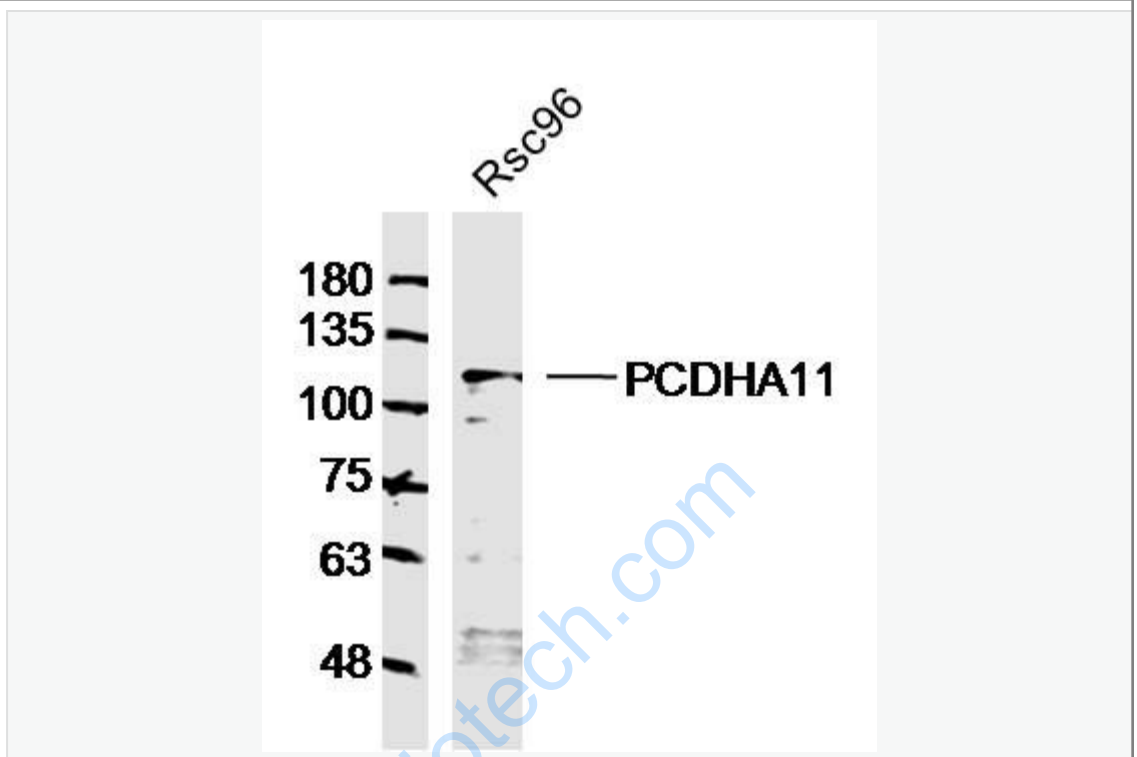
[Entrez Gene: 56138](#)Human

[SwissProt: Q9Y511](#)Human

**Important Note:**

This product as supplied is intended for research use only, not for use in human, therapeutic or diagnostic applications.

Picture:



Sample: Rsc96 Cell (Rat) Cell Lysate at 40 ug

Primary: Anti-PCDHA11(SL11124R) at 1/300 dilution

Secondary: IRDye800CW Goat Anti-Rabbit IgG at 1/20000 dilution

Predicted band size: 100kD

Observed band size: 110kD