



Rabbit Anti-glypican 3 antibody

SL1112R

Product Name:	glypican 3
Chinese Name:	磷脂酰基醇蛋白聚糖-3抗体
Alias:	glypican 3; glypican3; glypican-3; GPC3; Intestinal protein OCI-5; GTR2-2; MXR7.Intestinal protein OCI-5.
Organism Species:	Rabbit
Clonality:	Polyclonal
React Species:	Human,Mouse,Rat,
Applications:	WB=1:500-2000ELISA=1:500-1000Flow-Cyt=3μg/Test not yet tested in other applications. optimal dilutions/concentrations should be determined by the end user.
Molecular weight:	65kDa
Cellular localization:	The cell membraneExtracellular matrixSecretory protein
Form:	Lyophilized or Liquid
Concentration:	1mg/ml
immunogen:	KLH conjugated synthetic peptide derived from human glypican 3:201-300/580
Lsotype:	IgG
Purification:	affinity purified by Protein A
Storage Buffer:	0.01M TBS(pH7.4) with 1% BSA, 0.03% Proclin300 and 50% Glycerol.
Storage:	Store at -20 °C for one year. Avoid repeated freeze/thaw cycles. The lyophilized antibody is stable at room temperature for at least one month and for greater than a year when kept at -20°C. When reconstituted in sterile pH 7.4 0.01M PBS or diluent of antibody the antibody is stable for at least two weeks at 2-4 °C.
PubMed:	PubMed
Product Detail:	Cell surface heparan sulfate proteoglycans are composed of a membrane-associated protein core substituted with a variable number of heparan sulfate chains. Members of the glypican-related integral membrane proteoglycan family (GRIPS) contain a core protein anchored to the cytoplasmic membrane via a glycosyl phosphatidylinositol linkage. These proteins may play a role in the control of cell division and growth regulation. The protein encoded by this gene can bind to and inhibit the dipeptidyl peptidase activity of CD26, and it can induce apoptosis in certain cell types. Deletion

mutations in this gene are associated with Simpson-Golabi-Behmel syndrome, also known as Simpson dysmorphia syndrome. Alternative splicing results in multiple transcript variants. [provided by RefSeq, Sep 2009]

Function:

Cell surface proteoglycan that bears heparan sulfate. Inhibits the dipeptidyl peptidase activity of DPP4. May be involved in the suppression/modulation of growth in the predominantly mesodermal tissues and organs. May play a role in the modulation of IGF2 interactions with its receptor and thereby modulate its function. May regulate growth and tumor predisposition.

Subcellular Location:

Cell membrane and Secreted, extracellular space.

Tissue Specificity:

Highly expressed in lung, liver and kidney.

DISEASE:

Defects in GPC3 are the cause of Simpson-Golabi-Behmel syndrome type 1 (SGBS1) [MIM:312870]; also known as Simpson dysmorphia syndrome (SDYS). SGBS is a condition characterized by pre- and postnatal overgrowth (gigantism) with visceral and skeletal anomalies.

Similarity:

Belongs to the glypican family.

SWISS:

P51654

Gene ID:

2719

Database links:

[Entrez Gene: 2719](#) Human

[Entrez Gene: 14734](#) Mouse

[Entrez Gene: 25236](#) Rat

[Omim: 300037](#) Human

[SwissProt: P51654](#) Human

[SwissProt: Q8CFZ4](#) Mouse

[SwissProt: P13265](#) Rat

[Unigene: 644108](#) Human

[Unigene: 22515](#) Mouse

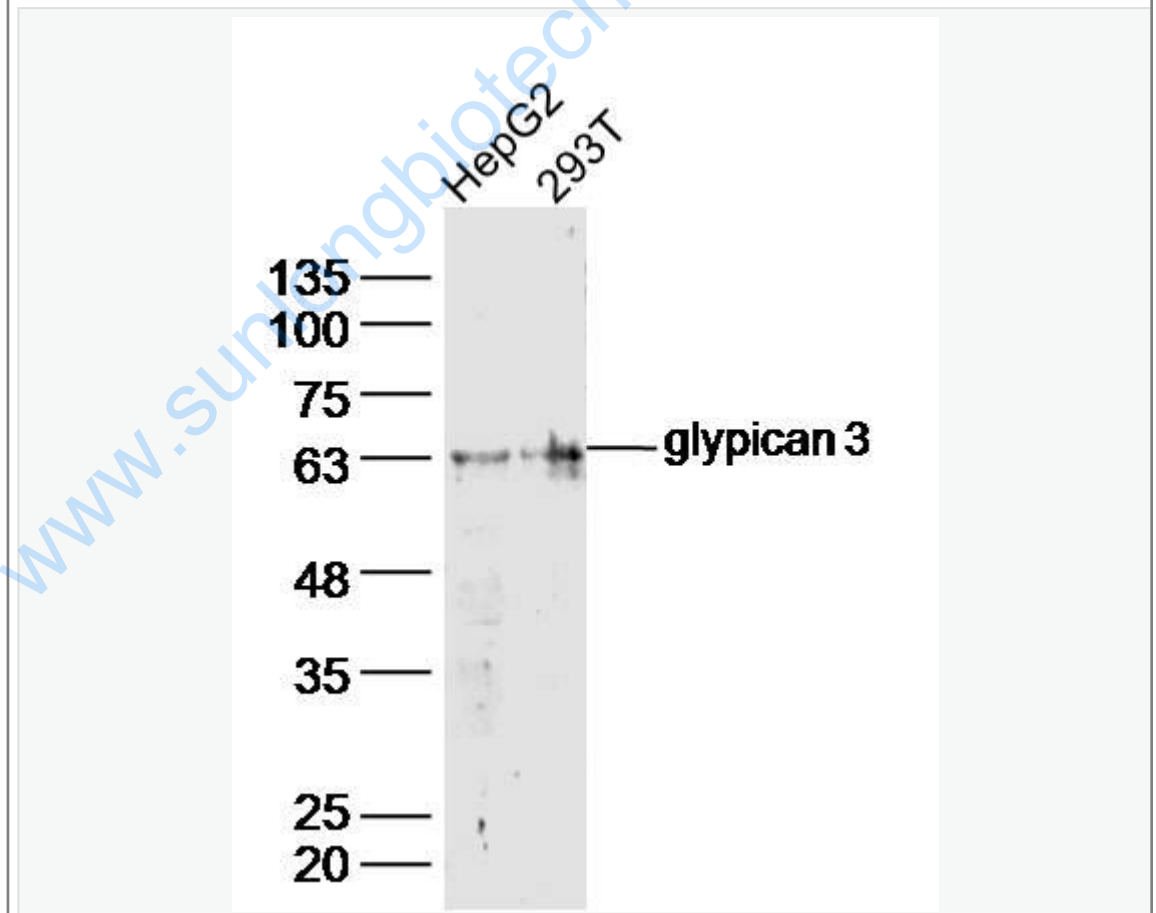
[Unigene: 9717](#) Rat

Important Note:

This product as supplied is intended for research use only, not for use in human, therapeutic or diagnostic applications.

GPC-3磷脂酰基醇蛋白聚糖-3是一种硫酸类肝素蛋白多糖, GPC-3在不同的组织中具有不同的生物学功能, 甚至起着完全不同的作用, 可能与Tumor组织类型、发病机制等密切相关. GPC3在绝大多数HCC(肝细胞癌)患者有表达。

Picture:



Sample:

HepG2 Cell (Human) Lysate at 40 ug

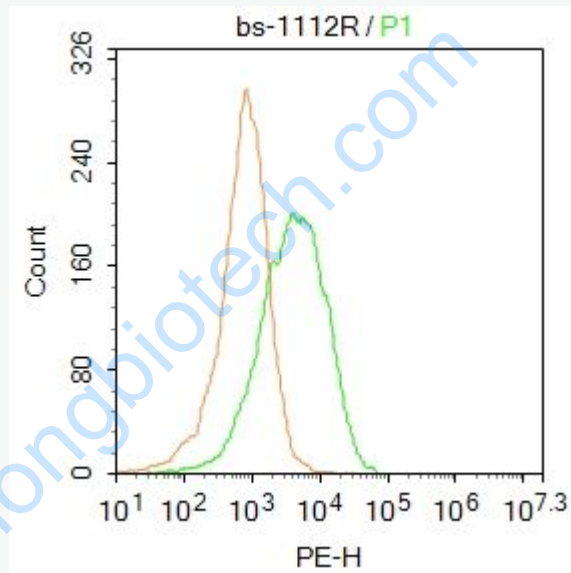
293T Cell (Human) Lysate at 40 ug

Primary: Anti-glypican 3 (SL1112R) at 1/300 dilution

Secondary: IRDye800CW Goat Anti-Rabbit IgG at 1/20000 dilution

Predicted band size: 65 kD

Observed band size: 65 kD



Blank control: HepG2.

Primary Antibody (green line): Rabbit Anti-glypican 3 antibody (SL1112R)

Dilution: 1µg /10⁶ cells;

Isotype Control Antibody (orange line): Rabbit IgG .

Secondary Antibody : Goat anti-rabbit IgG-PE

Dilution: 1µg /test.

Protocol

The cells then incubated in 5%BSA to block non-specific protein-protein

interactions for 30 min at at room temperature .Cells stained with Primary Antibody

	<p>for 30 min at room temperature. The secondary antibody used for 40 min at room temperature. Acquisition of 20,000 events was performed.</p>
--	--

www.sunlongbiotech.com