



## Rabbit Anti-SPRR3 antibody

SL11163R

<b>Product Name:</b>	SPRR3
<b>Chinese Name:</b>	角质蛋白β抗体
<b>Alias:</b>	22 kDa pancornulin; Cornifin beta; Cornifin B; Esophagin; Small proline rich protein 3; Small proline-rich protein 3; SPRC; Spr3; Esophagin; SPRR3_HUMAN.
<b>Organism Species:</b>	Rabbit
<b>Clonality:</b>	Polyclonal
<b>React Species:</b>	Human,Mouse,Rat,
<b>Applications:</b>	WB=1:500-2000ELISA=1:500-1000IHC-P=1:400-800IHC-F=1:400-800ICC=1:100-500IF=1:100-500 (Paraffin sections need antigen repair) not yet tested in other applications. optimal dilutions/concentrations should be determined by the end user.
<b>Molecular weight:</b>	18kDa
<b>Cellular localization:</b>	cytoplasmic
<b>Form:</b>	Lyophilized or Liquid
<b>Concentration:</b>	1mg/ml
<b>immunogen:</b>	KLH conjugated synthetic peptide derived from human SPRR3/Cornifin B:21-100/169
<b>Lsotype:</b>	IgG
<b>Purification:</b>	affinity purified by Protein A
<b>Storage Buffer:</b>	0.01M TBS(pH7.4) with 1% BSA, 0.03% Proclin300 and 50% Glycerol.
<b>Storage:</b>	Store at -20 °C for one year. Avoid repeated freeze/thaw cycles. The lyophilized antibody is stable at room temperature for at least one month and for greater than a year when kept at -20°C. When reconstituted in sterile pH 7.4 0.01M PBS or diluent of antibody the antibody is stable for at least two weeks at 2-4 °C.
<b>PubMed:</b>	<a href="#">PubMed</a>
<b>Product Detail:</b>	Esophagin, also known as small proline-rich protein 3 (SPR3) or Cornifin β, belongs to the cornifin family of cornified-envelope structural proteins. It is expressed in mucosal epithelia such as esophagus and tongue and is strongly induced during epidermal keratinocyte differentiation. Due to its highly inducible nature, Esophagin is considered a marker of squamous differentiation. Esophagin serves as a cross-linking protein within the cornified cell envelope and may play a role in the maintenance of normal esophageal

epithelial homeostasis. It shares significant homology with the related proteins, SPRR1 and SPRR2. Esophagin is typically not expressed in healthy human epithelium, but its expression is upregulated in numerous hyperproliferative disorders of the skin. Contrastly, its expression is dramatically downregulated in esophageal squamous cell carcinoma.

**Function:**

Cross-linked envelope protein of keratinocytes.

**Subunit:**

Belongs to the cornifin (SPRR) family.

**Subcellular Location:**

Cytoplasm.

**Similarity:**

Belongs to the cornifin (SPRR) family.

**SWISS:**

Q9UBC9

**Gene ID:**

6707

**Database links:**

[Entrez Gene: 6707](#) Human

[Omim: 182271](#) Human

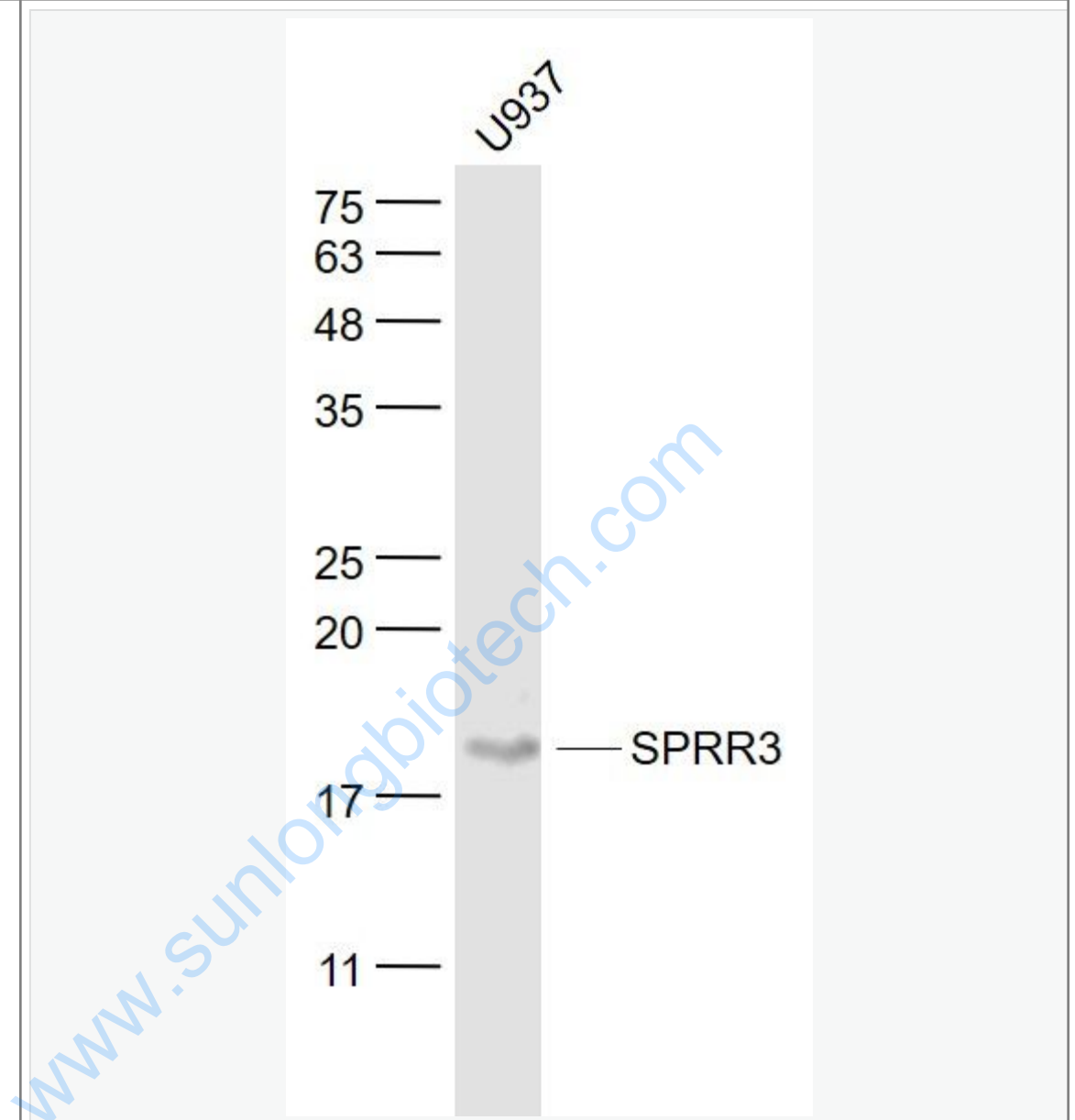
[SwissProt: Q9UBC9](#) Human

[Unigene: 139322](#) Human

**Important Note:**

This product as supplied is intended for research use only, not for use in human, therapeutic or diagnostic applications.

Picture:



Sample:

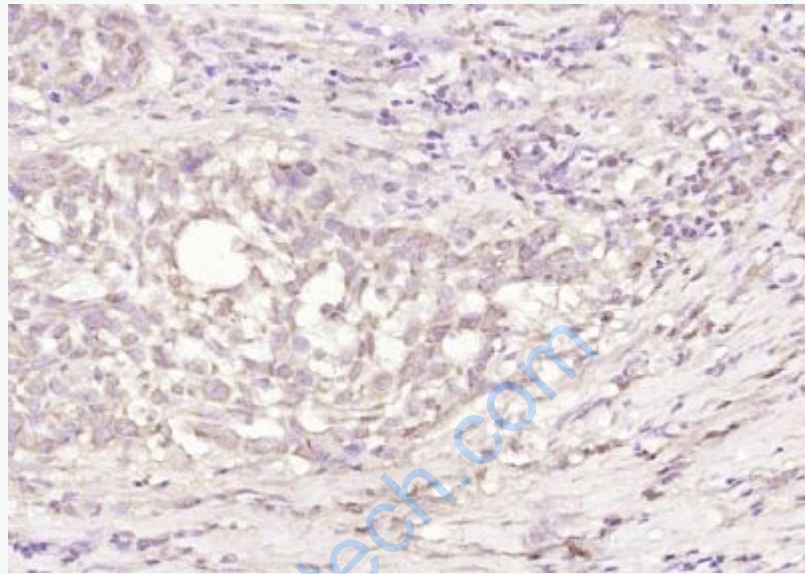
U937(Human) Cell Lysate at 30 ug

Primary: Anti- SPRR3 (SL11163R) at 1/1000 dilution

Secondary: IRDye800CW Goat Anti-Rabbit IgG at 1/20000 dilution

Predicted band size: 18 kD

Observed band size: 18 kD



Paraformaldehyde-fixed, paraffin embedded (Human esophageal cancer); Antigen retrieval by boiling in sodium citrate buffer (pH6.0) for 15min; Block endogenous peroxidase by 3% hydrogen peroxide for 20 minutes; Blocking buffer (normal goat serum) at 37°C for 30min; Antibody incubation with (SPRR3) Polyclonal Antibody, Unconjugated (SL11163R) at 1:400 overnight at 4°C, followed by operating according to SP Kit(Rabbit) (sp-0023) instructions and DAB staining.