



## Rabbit Anti-NXPH1 antibody

SL11170R

<b>Product Name:</b>	NXPH1
<b>Chinese Name:</b>	神经外营养蛋白1抗体
<b>Alias:</b>	Neurexophilin 1; Neurexophilin-1; Neurexophilin1; NPH1; NXPH 1; NXPH1; NXPH1_HUMAN; Nbla00697.
<b>Organism Species:</b>	Rabbit
<b>Clonality:</b>	Polyclonal
<b>React Species:</b>	Human,Mouse,Rat,Chicken,Pig,Cow,Rabbit,
<b>Applications:</b>	WB=1:500-2000ELISA=1:500-1000IHC-P=1:400-800IHC-F=1:400-800ICC=1:100-500IF=1:100-500 (Paraffin sections need antigen repair) not yet tested in other applications. optimal dilutions/concentrations should be determined by the end user.
<b>Molecular weight:</b>	29kDa
<b>Cellular localization:</b>	Secretory protein
<b>Form:</b>	Lyophilized or Liquid
<b>Concentration:</b>	1mg/ml
<b>immunogen:</b>	KLH conjugated synthetic peptide derived from human NXPH1:131-230/271
<b>Lsotype:</b>	IgG
<b>Purification:</b>	affinity purified by Protein A
<b>Storage Buffer:</b>	0.01M TBS(pH7.4) with 1% BSA, 0.03% Proclin300 and 50% Glycerol.
<b>Storage:</b>	Store at -20 °C for one year. Avoid repeated freeze/thaw cycles. The lyophilized antibody is stable at room temperature for at least one month and for greater than a year when kept at -20°C. When reconstituted in sterile pH 7.4 0.01M PBS or diluent of antibody the antibody is stable for at least two weeks at 2-4 °C.
<b>PubMed:</b>	<a href="#">PubMed</a>
<b>Product Detail:</b>	May be signaling molecules that resemble neuropeptides and that act by binding to alpha-neurexins and possibly other receptors. <b>Function:</b> May be signaling molecules that resemble neuropeptides and that act by binding to alpha-neurexins and possibly other receptors (Potential).

**Subunit:**

Belongs to the neurexophilin family.

**Subcellular Location:**

Secreted.

**Similarity:**

Belongs to the neurexophilin family.

**SWISS:**

P58417

**Gene ID:**

30010

**Database links:**

[Entrez Gene: 30010](#)Human

[Entrez Gene: 18231](#)Mouse

[Entrez Gene: 25501](#)Rat

[Omim: 604639](#)Human

[SwissProt: P58417](#)Human

[SwissProt: Q61200](#)Mouse

[SwissProt: Q63366](#)Rat

[Unigene: 487564](#)Human

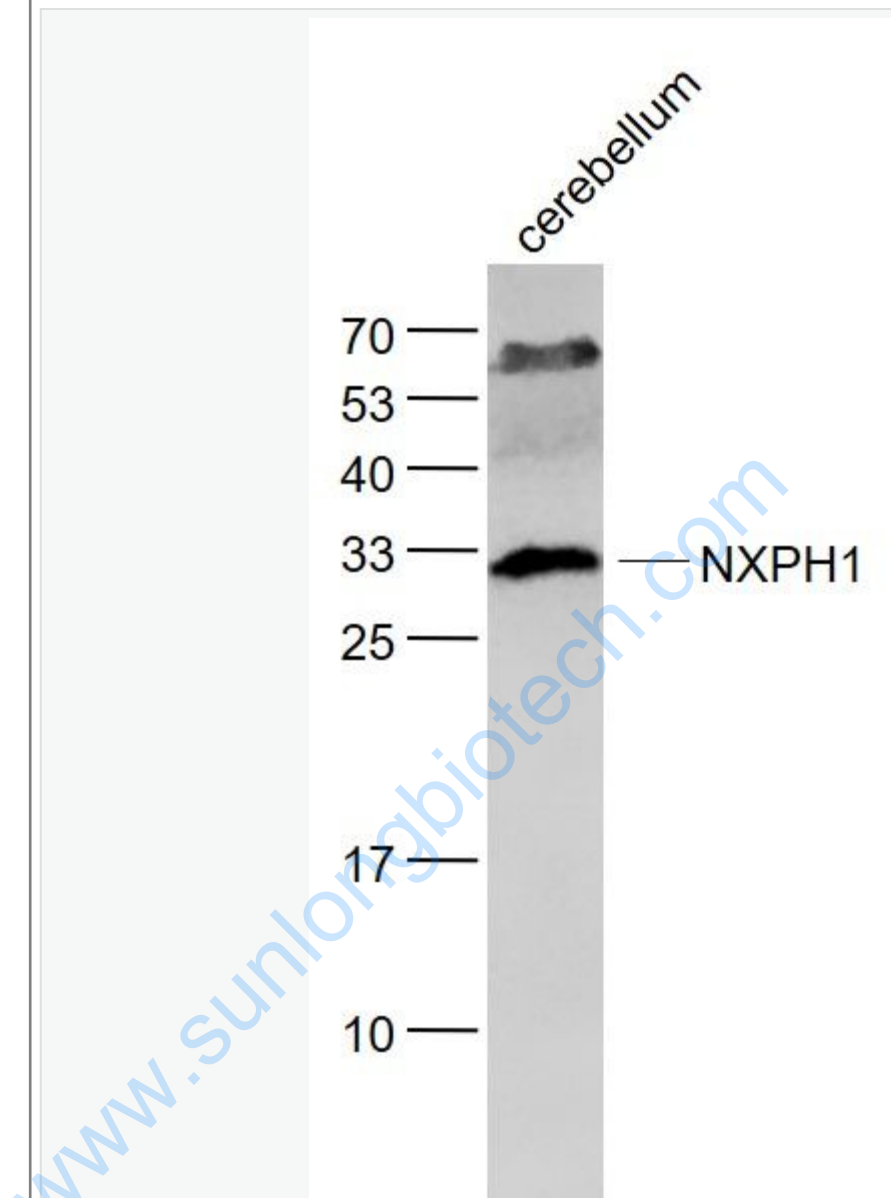
[Unigene: 46954](#)Mouse

[Unigene: 10610](#)Rat

**Important Note:**

This product as supplied is intended for research use only, not for use in human, therapeutic or diagnostic applications.

Picture:



Sample:

Cerebellum (Mouse) Lysate at 40 ug

Primary: Anti- NXP1 (SL11170R) at 1/1000 dilution

Secondary: IRDye800CW Goat Anti-Rabbit IgG at 1/20000 dilution

Predicted band size: 29 kD

	Observed band size: 30 kD
--	---------------------------

[www.sunlongbiotech.com](http://www.sunlongbiotech.com)