



## Rabbit Anti-Trypsin Inhibitor antibody

SL11177R

<b>Product Name:</b>	Trypsin Inhibitor
<b>Chinese Name:</b>	胰蛋白酶抑制剂抗体
<b>Alias:</b>	Peptidase inhibitor 15; PI-15; 25 kDa trypsin inhibitor; p25TI; Cysteine-rich secretory protein 8; CRISP-8; SugarCrisp; PI15 HUMAN.
<b>Organism Species:</b>	Rabbit
<b>Clonality:</b>	Polyclonal
<b>React Species:</b>	Human,Mouse,Rat,Chicken,Dog,Pig,Cow,Horse,Sheep,
<b>Applications:</b>	WB=1:500-2000ELISA=1:500-1000IHC-P=1:400-800IHC-F=1:400-800ICC=1:100-500IF=1:100-500 (Paraffin sections need antigen repair) not yet tested in other applications. optimal dilutions/concentrations should be determined by the end user.
<b>Molecular weight:</b>	23kDa
<b>Cellular localization:</b>	Secretory protein
<b>Form:</b>	Lyophilized or Liquid
<b>Concentration:</b>	1mg/ml
<b>immunogen:</b>	KLH conjugated synthetic peptide derived from human Trypsin Inhibitor:101-200/258
<b>Lsotype:</b>	IgG
<b>Purification:</b>	affinity purified by Protein A
<b>Storage Buffer:</b>	0.01M TBS(pH7.4) with 1% BSA, 0.03% Proclin300 and 50% Glycerol.
<b>Storage:</b>	Store at -20 °C for one year. Avoid repeated freeze/thaw cycles. The lyophilized antibody is stable at room temperature for at least one month and for greater than a year when kept at -20°C. When reconstituted in sterile pH 7.4 0.01M PBS or diluent of antibody the antibody is stable for at least two weeks at 2-4 °C.
<b>PubMed:</b>	<a href="#">PubMed</a>
<b>Product Detail:</b>	Cysteine-rich secretory proteins (CRISPs) represent a family of evolutionarily conserved proteins which play a role in the innate immune system and are transcriptionally regulated by androgens in several tissues. CRISP-8 (Cysteine-rich secretory protein 8), also known as PI15 (Peptidase inhibitor 15), P25TI or SugarCrisp, is a 258 amino acid secreted protein that belongs to the CRISP family. Expressed at low levels in thyroid, prostate, salivary and mammary tissue, CRISP-8 functions as a serine protease inhibitor

that exhibits weak inhibitory action against Trypsin, a serine protease found in the digestive system. In addition to its role as a protease inhibitor, CRISP-8 is secreted in neuroblastoma and glioblastoma cell lines, suggesting a role for CRISP-8 in tumor formation and metastasis within the central nervous system.

**Function:**

The soybean trypsin inhibitor was first crystallized by Kunitz in 1945 and is Serine protease inhibitor which displays weak inhibitory activity against trypsin.

**Subcellular Location:**

Secreted.

**Tissue Specificity:**

Weakly expressed. Expressed at low level in prostate, mammary gland, salivary gland and thyroid gland.

**Post-translational modifications:**

N-glycosylated (Probable).

**Similarity:**

Belongs to the CRISP family.

**SWISS:**

O43692

**Gene ID:**

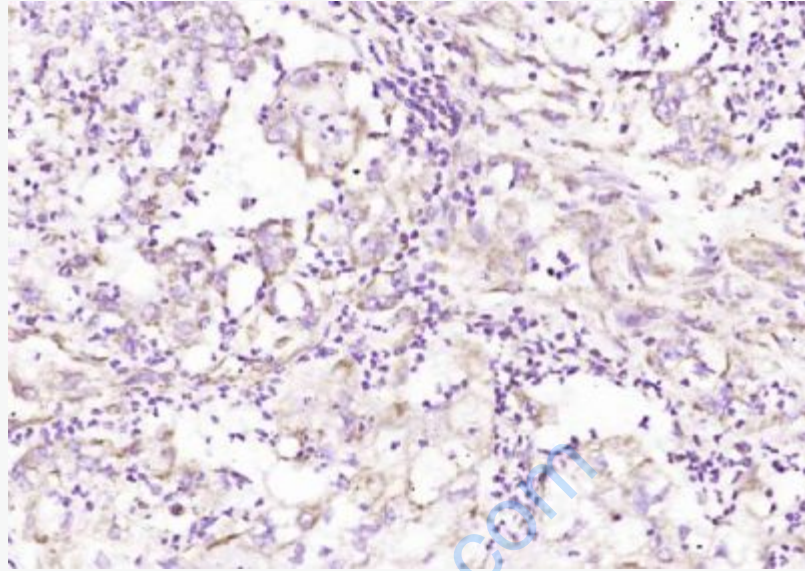
51050

**Database links:**

UniProtKB/Swiss-Prot: O43692.1

**Important Note:**

This product as supplied is intended for research use only, not for use in human, therapeutic or diagnostic applications.



**Picture:**

Paraformaldehyde-fixed, paraffin embedded (human endometrial carcinoma);  
Antigen retrieval by boiling in sodium citrate buffer (pH6.0) for 15min; Block  
endogenous peroxidase by 3% hydrogen peroxide for 20 minutes; Blocking buffer  
(normal goat serum) at 37°C for 30min; Antibody incubation with (Trypsin  
Inhibitor) Polyclonal Antibody, Unconjugated (SL11177R) at 1:200 overnight at  
4°C, followed by operating according to SP Kit(Rabbit) (sp-0023) instructions and  
DAB staining.