




Rabbit Anti-LHX2 antibody

SL11200R

Product Name:	LHX2
Chinese Name:	调控胚胎Stem cells分化蛋白Lhx2抗体
Alias:	hLhx2; Homeobox protein LH-2; Homeobox protein LH2; LH2; LHX2; LHX2_HUMAN; LIM homeobox 2; LIM homeobox protein 2; LIM HOX gene 2; LIM/homeobox protein Lhx2.
文献引用 	Specific References(1) SL11200R has been referenced in 1 publications. [IF=1.36] Geng, Rongqing, et al. "Cyclic expression of Lhx2 is involved in secondary hair follicle development in cashmere goat." Gene Expression Patterns (2014).IHC-P;Goat. PubMed:25128627
Organism Species:	Rabbit
Clonality:	Polyclonal
React Species:	Human,Mouse,Rat,Chicken,Pig,Cow,Horse,Rabbit,
Applications:	WB=1:500-2000ELISA=1:500-1000IHC-P=1:400-800IHC-F=1:400-800Flow-Cyt=1µg/TestICC=1:100-500IF=1:100-500 (Paraffin sections need antigen repair) not yet tested in other applications. optimal dilutions/concentrations should be determined by the end user.
Molecular weight:	45kDa
Cellular localization:	The nucleus
Form:	Lyophilized or Liquid
Concentration:	1mg/ml
immunogen:	KLH conjugated synthetic peptide derived from human LHX2:251-330/406
Lsotype:	IgG
Purification:	affinity purified by Protein A
Storage Buffer:	0.01M TBS(pH7.4) with 1% BSA, 0.03% Proclin300 and 50% Glycerol.
Storage:	Store at -20 °C for one year. Avoid repeated freeze/thaw cycles. The lyophilized antibody is stable at room temperature for at least one month and for greater than a year

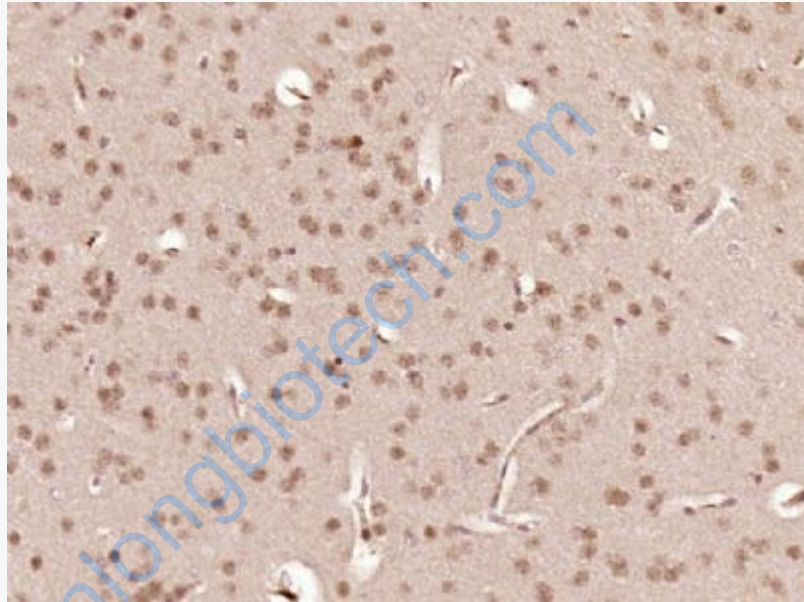
	when kept at -20°C. When reconstituted in sterile pH 7.4 0.01M PBS or diluent of antibody the antibody is stable for at least two weeks at 2-4 °C.
PubMed:	PubMed
Product Detail:	<p>During development, genetically distinct subtypes of motor neurons express unique combinations of LIM-type homeodomain factors, which regulate cell migration and guide motor axons to establish the fidelity of a binary choice in axonal trajectory. The LIM gene family encodes a set of gene products, which carry the LIM domain, a unique cysteine-rich zinc-binding domain. At least 40 members of this family have been identified in vertebrates and invertebrates, and are distributed into 4 groups according to the number of LIM domains and to the presence of homeodomains and kinase domains. The overlapping expression of LHX1, LHX3, LHX4, Isl-1 and Isl-2 in developing motor neurons along the spinal column may influence the establishment of specific motor neuron subtypes. The human LHX2 gene maps to chromosome 9q33.3 and encodes a 389 amino acid protein. LHX2 is involved in early patterning of the telencephalon, where the neuroepithelium is first divided into cortical tissue and cortical hem.</p> <p>Function: Acts as a transcriptional activator. Stimulates the promoter of the alpha-glycoprotein gene. Transcriptional regulatory protein involved in the control of cell differentiation in developing lymphoid and neural cell types.</p> <p>Subunit: Contains 1 homeobox DNA-binding domain. Contains 2 LIM zinc-binding domains.</p> <p>Subcellular Location: Nucleus.</p> <p>Similarity: Contains 1 homeobox DNA-binding domain. Contains 2 LIM zinc-binding domains.</p> <p>SWISS: P50458</p> <p>Gene ID: 9355</p> <p>Database links: Entrez Gene: 16870Mouse Entrez Gene: 296706Rat SwissProt: Q9Z0S2Mouse SwissProt: P36198Rat</p>

[Unigene: 142856](#)Mouse

[Unigene: 81063](#)Rat

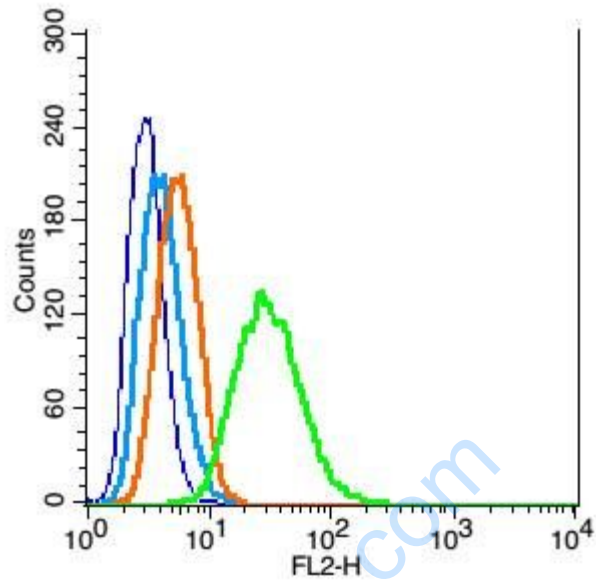
Important Note:

This product as supplied is intended for research use only, not for use in human, therapeutic or diagnostic applications.



Picture:

Paraformaldehyde-fixed, paraffin embedded (Mouse brain); Antigen retrieval by boiling in sodium citrate buffer (pH6.0) for 15min; Block endogenous peroxidase by 3% hydrogen peroxide for 20 minutes; Blocking buffer (normal goat serum) at 37°C for 30min; Antibody incubation with (LHX2) Polyclonal Antibody, Unconjugated (SL11200R) at 1:500 overnight at 4°C, followed by a conjugated secondary (sp-0023) for 20 minutes and DAB staining.



Blank control: RSC96(blue), the cells were fixed with 2% paraformaldehyde (10 min) and then permeabilized with ice-cold 90% methanol for 30 min on ice.

Isotype Control Antibody: Rabbit IgG(orange) ; Secondary Antibody: Goat anti-rabbit IgG-PE(white blue), Dilution: 1:200 in 1 X PBS containing 0.5% BSA ;

Primary Antibody Dilution: 1 μ g in 100 μ L 1X PBS containing 0.5% BSA(green).