



## Rabbit Anti-PLAGL1 antibody

SL11206R

<b>Product Name:</b>	PLAGL1
<b>Chinese Name:</b>	多型性腺瘤基因样蛋白1抗体
<b>Alias:</b>	DKFZp781P1017; Lost on transformation 1; Lost on Transformation; LOT-1; LOT1; MGC126275; MGC126276; PLAG like 1; PLAGL1; PLAL1_HUMAN; Pleiomorphic adenoma gene like 1; Pleiomorphic adenoma gene like protein 1; Pleiomorphic adenoma-like protein 1; Tumor supressor ZAC; ZAC; ZAC tumor supressor; ZAC1; Zinc finger protein PLAGL1.
<b>Organism Species:</b>	Rabbit
<b>Clonality:</b>	Polyclonal
<b>React Species:</b>	Human,Mouse,Rat,Dog,Pig,Zebrafish,
<b>Applications:</b>	ELISA=1:500-1000IHC-P=1:400-800IHC-F=1:400-800ICC=1:100-500IF=1:100-500 (Paraffin sections need antigen repair) not yet tested in other applications. optimal dilutions/concentrations should be determined by the end user.
<b>Molecular weight:</b>	51kDa
<b>Cellular localization:</b>	The nucleus
<b>Form:</b>	Lyophilized or Liquid
<b>Concentration:</b>	1mg/ml
<b>immunogen:</b>	KLH conjugated synthetic peptide derived from human PLAGL1:1-100/463
<b>Lsotype:</b>	IgG
<b>Purification:</b>	affinity purified by Protein A
<b>Storage Buffer:</b>	0.01M TBS(pH7.4) with 1% BSA, 0.03% Proclin300 and 50% Glycerol.
<b>Storage:</b>	Store at -20 °C for one year. Avoid repeated freeze/thaw cycles. The lyophilized antibody is stable at room temperature for at least one month and for greater than a year when kept at -20°C. When reconstituted in sterile pH 7.4 0.01M PBS or diluent of antibody the antibody is stable for at least two weeks at 2-4 °C.
<b>PubMed:</b>	<a href="#">PubMed</a>
<b>Product Detail:</b>	This gene encodes a C2H2 zinc finger protein with transactivation and DNA-binding activities. It has been shown to have anti-proliferative properties, and thus thought to function as a tumor suppressor. In addition, overexpression of this gene during fetal

development is believed to underlie the rare disorder, transient neonatal diabetes mellitus (TNDM). This gene is imprinted, with preferential expression of the paternal allele in many tissues, however, biallelic expression has been noted in peripheral blood leucocytes. A recent study reports that tissue-specific imprinting results from variable utilization of monoallelic and biallelic promoters. Many transcript variants differing in the 5' UTR and encoding two different isoforms, have been found for this gene. [provided by RefSeq, Oct 2010].

**Function:**

Shows weak transcriptional activatory activity. Transcriptional regulator of the type 1 receptor for pituitary adenylate cyclase-activating polypeptide.

**Subunit:**

Interacts with THRSP.

**Subcellular Location:**

Nucleus.

**Similarity:**

Belongs to the krueppel C2H2-type zinc-finger protein family. Contains 7 C2H2-type zinc fingers.

**SWISS:**

Q9UM63

**Gene ID:**

5325

**Database links:**

[Entrez Gene: 5325](#) Human

[Entrez Gene: 22634](#) Mouse

[Entrez Gene: 25157](#) Rat

[Entrez Gene: 421664](#) Chicken

[Omim: 603044](#) Human

[SwissProt: Q9UM63](#) Human

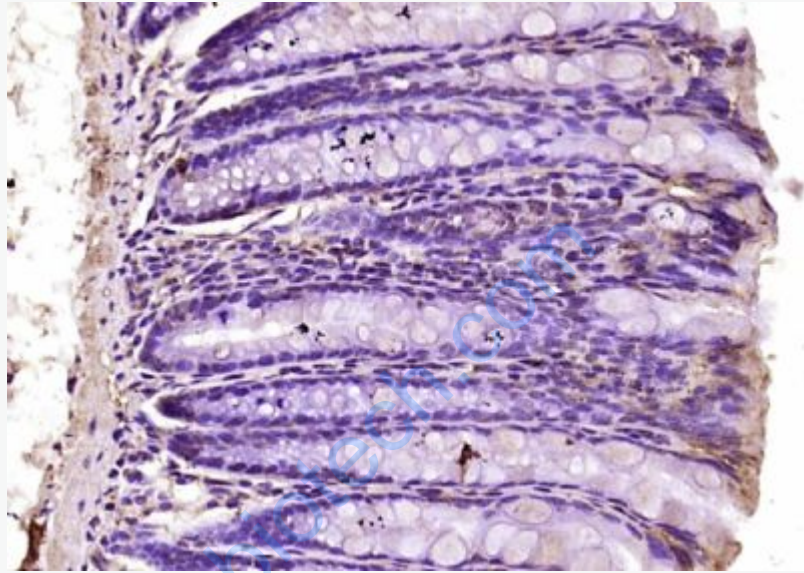
[Unigene: 725973](#) Human

[Unigene: 287857](#) Mouse

[Unigene: 6977](#) Rat

**Important Note:**

This product as supplied is intended for research use only, not for use in human, therapeutic or diagnostic applications.



**Picture:**

Paraformaldehyde-fixed, paraffin embedded (mouse colon); Antigen retrieval by boiling in sodium citrate buffer (pH6.0) for 15min; Block endogenous peroxidase by 3% hydrogen peroxide for 20 minutes; Blocking buffer (normal goat serum) at 37°C for 30min; Antibody incubation with (PLAGL1) Polyclonal Antibody, Unconjugated (SL11206R) at 1:200 overnight at 4°C, followed by operating according to SP Kit(Rabbit) (sp-0023) instructions and DAB staining.