



## Rabbit Anti-Sema3A antibody

SL1121R

<b>Product Name:</b>	Sema3A
<b>Chinese Name:</b>	臂板蛋白3A抗体
<b>Alias:</b>	Semaphorin 3A; Semaphorin-3A; Semaphorin-3A precursor; Semaphorin3A; SemD; Sema 3A; SEM3A_MOUSE; Coll 1; Coll1; Hsema I; Hsema III; sema domain immunoglobulin domain (Ig) short basic domain secreted (semaphorin) 3A; Sema III; SEMA1; SEMA1-PEN; SEMA3A; SEMAD; SEMAIII; SEMAL; Semaphorin III; Semaphorin like growth cone guidance homolog of chick collapsin; Semaphorin III; Semaphorin-D; Sema D.
<b>Organism Species:</b>	Rabbit
<b>Clonality:</b>	Polyclonal
<b>React Species:</b>	Human,Mouse,Rat,
<b>Applications:</b>	WB=1:500-2000ELISA=1:500-1000IHC-P=1:400-800IHC-F=1:400-800 (Paraffin sections need antigen repair) not yet tested in other applications. optimal dilutions/concentrations should be determined by the end user.
<b>Molecular weight:</b>	86kDa
<b>Cellular localization:</b>	Secretory protein
<b>Form:</b>	Lyophilized or Liquid
<b>Concentration:</b>	1mg/ml
<b>immunogen:</b>	KLH conjugated synthetic peptide derived from mouse Sema3A:22-120/772
<b>Lsotype:</b>	IgG
<b>Purification:</b>	affinity purified by Protein A
<b>Storage Buffer:</b>	0.01M TBS(pH7.4) with 1% BSA, 0.03% Proclin300 and 50% Glycerol.
<b>Storage:</b>	Store at -20 °C for one year. Avoid repeated freeze/thaw cycles. The lyophilized antibody is stable at room temperature for at least one month and for greater than a year when kept at -20°C. When reconstituted in sterile pH 7.4 0.01M PBS or diluent of antibody the antibody is stable for at least two weeks at 2-4 °C.
<b>PubMed:</b>	<a href="#">PubMed</a>
<b>Product Detail:</b>	This gene is a member of the semaphorin family and encodes a protein with an Ig-like C2-type (immunoglobulin-like) domain, a PSI domain and a Sema domain. This

secreted protein can function as either a chemorepulsive agent, inhibiting axonal outgrowth, or as a chemoattractive agent, stimulating the growth of apical dendrites. In both cases, the protein is vital for normal neuronal pattern development. Increased expression of this protein is associated with schizophrenia and is seen in a variety of human tumor cell lines. Also, aberrant release of this protein is associated with the progression of Alzheimer's disease.

**Function:**

Plays a role in growth cones guidance. May function to pattern sensory projections by selectively repelling axons that normally terminate dorsally. Involved in the development of the olfactory system and in neuronal control of puberty.

**Subunit:**

Interacts with PXND1.

**Subcellular Location:**

Secreted.

**Tissue Specificity:**

Expressed at relatively high levels in brain and muscle, moderate levels in lung, bursa, and heart and virtually absent in liver. Collapsin-1, -2, -3, and -5 bind to overlapping but distinct axon tracts.

**Similarity:**

Belongs to the semaphorin family.

Contains 1 Ig-like C2-type (immunoglobulin-like) domain.

Contains 1 PSI domain.

Contains 1 Sema domain.

**SWISS:**

O08665

**Gene ID:**

20346

**Database links:**

[Entrez Gene: 10371](#)Human

[Entrez Gene: 20346](#)Mouse

[Entrez Gene: 29751](#)Rat

[Omim: 603961](#)Human

[SwissProt: Q14563](#)Human

[SwissProt: O08665](#)Mouse

[SwissProt: Q5BL08](#)Mouse

[SwissProt: Q63548](#)Rat

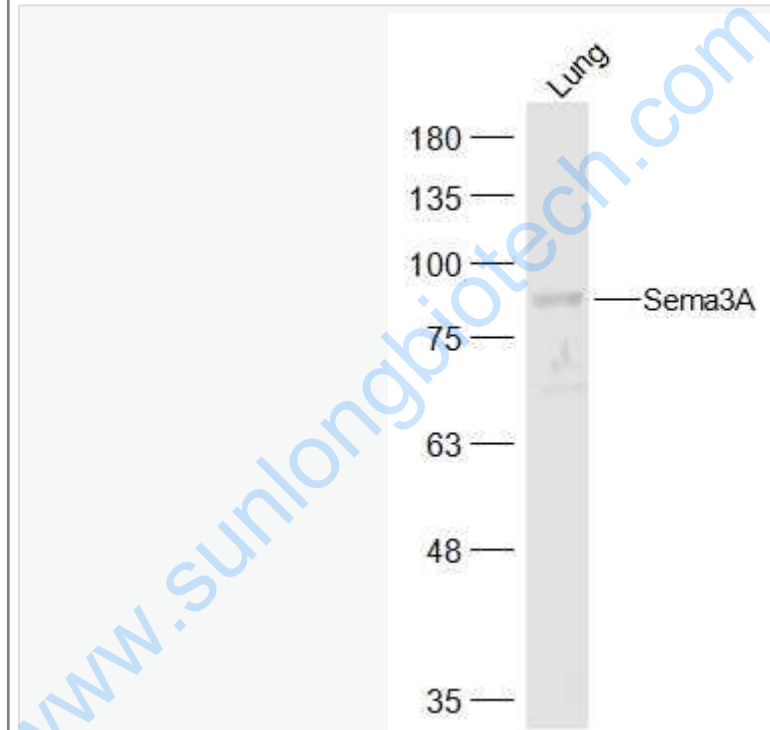
[Unigene: 252451](#)Human

[Unigene: 44410](#)Rat

**Important Note:**

This product as supplied is intended for research use only, not for use in human, therapeutic or diagnostic applications.

**Picture:**



Sample:

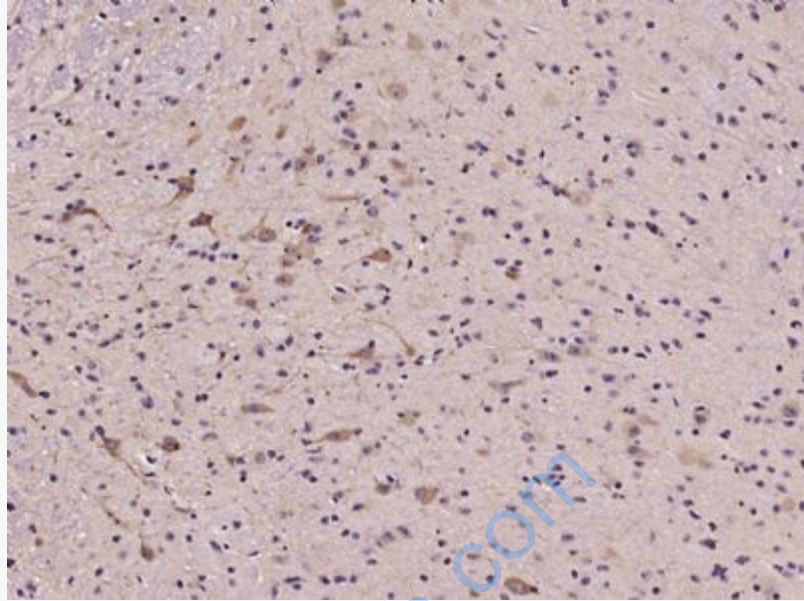
Lung (Mouse) Lysate at 40 ug

Primary: Anti-Sema3A (SL1121R) at 1/500 dilution

Secondary: IRDye800CW Goat Anti-Rabbit IgG at 1/20000 dilution

Predicted band size: 86 kD

Observed band size: 86 kD



Paraformaldehyde-fixed, paraffin embedded (Mouse brain); Antigen retrieval by microwave in sodium citrate buffer (pH6.0) ; Block endogenous peroxidase by 3% hydrogen peroxide for 30 minutes; Blocking buffer (3% BSA) at RT for 30min; Antibody incubation with (Sema3A) Polyclonal Antibody, Unconjugated (SL1121R) at 1:400 overnight at 4°C, followed by conjugation to the secondary antibody (labeled with HRP) and DAB staining.