



Rabbit Anti-CREB3L3 antibody

SL11239R

Product Name:	CREB3L3
Chinese Name:	环腺苷酸应答元件Binding proteinH抗体
Alias:	cAMP responsive element binding protein 3 like 3; cAMP responsive element-binding protein 3 like protein 3; CREB H; CREB/ATF family transcription factor; CREBH; Cyclic AMP responsive element binding protein 3 like protein 3; cAMP-responsive element-binding protein 3-like protein 3; HYST1481; MGC126553; MGC126557; Transcription factor CREB H; CR3L3 HUMAN.
Organism Species:	Rabbit
Clonality:	Polyclonal
React Species:	Human,Mouse,Rat,Chicken,Dog,Pig,Cow,Sheep,
Applications:	WB=1:500-2000ELISA=1:500-1000IHC-P=1:400-800IHC-F=1:400-800Flow-Cyt=0.2ug/TestICC=1:100-500IF=1:100-500 (Paraffin sections need antigen repair) not yet tested in other applications. optimal dilutions/concentrations should be determined by the end user.
Molecular weight:	49kDa
Cellular localization:	The nucleuscytoplasmicThe cell membrane
Form:	Lyophilized or Liquid
Concentration:	1mg/ml
immunogen:	KLH conjugated synthetic peptide derived from human CREB-H:201-300/461
Lsotype:	IgG
Purification:	affinity purified by Protein A
Storage Buffer:	0.01M TBS(pH7.4) with 1% BSA, 0.03% Proclin300 and 50% Glycerol.
Storage:	Store at -20 °C for one year. Avoid repeated freeze/thaw cycles. The lyophilized antibody is stable at room temperature for at least one month and for greater than a year when kept at -20°C. When reconstituted in sterile pH 7.4 0.01M PBS or diluent of antibody the antibody is stable for at least two weeks at 2-4 °C.
PubMed:	PubMed
Product Detail:	CREB3L3 is a 461 amino acid single-pass type II membrane protein that localizes to the endoplasmic reticulum (ER) and, in response to ER stress, is cleaved and translocated to the nucleus. Expressed exclusively in liver, CREB3L3 functions as a transcription factor

that, during ER stress, is thought to activate genes that are involved in both the unfolded protein response and the acute phase response (APR). Additionally, CREB3L3 is underexpressed in hepatocellular carcinoma, suggesting a possible role as a tumor suppressor. CREB3L3 functions as a dimer and contains one leucine zipper domain, a KDEL-like sequence and a bZIP domain, through which it conveys its DNA binding ability. Three isoforms of CREB3L3 exist due to alternative splicing events.

Function:

Transcription factor that may act during endoplasmic reticulum stress by activating unfolded protein response target genes. Activated in response to cAMP stimulation. In vitro, binds to the cAMP response element (CRE) and box-B element. Activates transcription through box-B element. Activates transcription through CRE (By similarity). Seems to function synergistically with ATF6. In acute inflammatory response, may activate expression of acute phase response (APR) genes. May be involved in growth suppression.

Subunit:

Binds DNA as a dimer (By similarity). Probably homodimerizes. Probably forms a heterodimer with ATF6. Interacts with ATF6.

Subcellular Location:

Endoplasmic reticulum membrane; Single-pass type II membrane protein. Nucleus.

Tissue Specificity:

Exclusively expressed in liver. Underexpressed in hepatocellular carcinoma tissues.

Post-translational modifications:

Controlled by regulated intramembrane proteolysis (RIP). Following ER stress a fragment containing the cytoplasmic transcription factor domain is released by proteolysis. The cleavage seems to be performed sequentially by site-1 and site-2 proteases (PS1 and PS2).

N- and O-glycosylated. N-glycosylation is required for optimal proteolytic activation. O-glycosylated with core 1 or possibly core 8 glycans.

Similarity:

Belongs to the bZIP family. ATF subfamily.
Contains 1 bZIP (basic-leucine zipper) domain.

SWISS:

Q68CJ9

Gene ID:

84699

Database links:

[Entrez Gene: 84699](#) Human

[Omin: 611998](#) Human

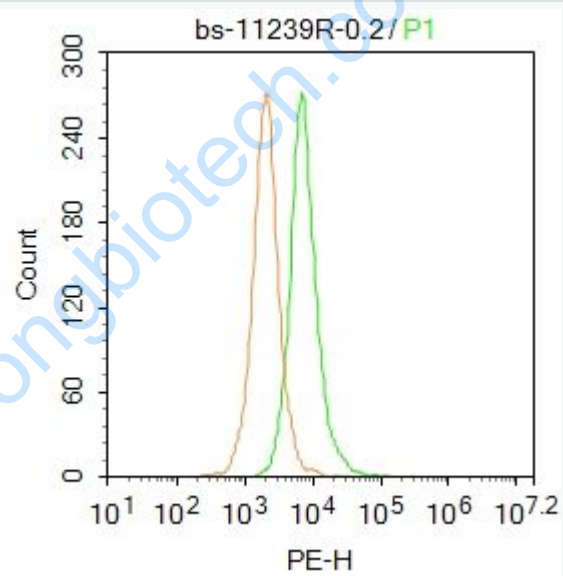
[SwissProt: Q68CJ9](#) Human

[Unigene: 247744](#) Human

Important Note:

This product as supplied is intended for research use only, not for use in human, therapeutic or diagnostic applications.

Picture:



Blank control: HepG2.

Primary Antibody (green line): Rabbit Anti-CREB3L3 antibody (SL11239R)

Dilution: 1µg /10⁶ cells;

Isotype Control Antibody (orange line): Rabbit IgG .

Secondary Antibody : Goat anti-rabbit IgG-PE

Dilution: 1µg /test.

Protocol

The cells were fixed with 4% PFA (10min at room temperature)and then permeabilized with 90% ice-cold methanol for 20 min at-20°C. The cells were then incubated in 5%BSA to block non-specific protein-protein interactions for 30 min at room temperature .Cells stained with Primary Antibody for 30 min at room temperature. The secondary antibody used for 40 min at room temperature. Acquisition of 20,000 events was performed.