



Rabbit Anti-CaMKK1 antibody

SL11247R

Product Name:	CaMKK1
Chinese Name:	钙调蛋白激酶激酶 α 抗体CaMKK α
Alias:	CaMKK α ; Calcium/calmodulin dependent protein kinase kinase alpha; CaM kinase kinase alpha; Ca ²⁺ /calmodulin-dependent protein kinase kinase alpha; Calcium/calmodulin dependent protein kinase kinase; Calcium/calmodulin dependent protein kinase kinase 1 alpha; Calcium/calmodulin dependent protein kinase kinase 1; Calcium/calmodulin-dependent protein kinase kinase 1; Calcium/calmodulin-dependent protein kinase kinase alpha; CaM-kinase IV kinase; CaM-kinase kinase 1; CaM-kinase kinase alpha; CaM-KK 1; CaM-KK alpha; CaMKK 1; CaMKK alpha; CAMKK alpha protein; CaMKK; Camkk1; CAMKKA; DKFZp761M0423; KKCC1_HUMAN; MGC34095; OTTMUSP00000006419.
Organism Species:	Rabbit
Clonality:	Polyclonal
React Species:	Human,Mouse,Rat,Chicken,Dog,Pig,Cow,Horse,Rabbit,Sheep,
Applications:	ELISA=1:500-1000IHC-P=1:400-800IHC-F=1:400-800ICC=1:100-500IF=1:100-500 (Paraffin sections need antigen repair) not yet tested in other applications. optimal dilutions/concentrations should be determined by the end user.
Molecular weight:	56kDa
Cellular localization:	The nucleuscytoplasmic
Form:	Lyophilized or Liquid
Concentration:	1mg/ml
immunogen:	KLH conjugated synthetic peptide derived from human CaMKK1:101-200/505
Lsotype:	IgG
Purification:	affinity purified by Protein A
Storage Buffer:	0.01M TBS(pH7.4) with 1% BSA, 0.03% Proclin300 and 50% Glycerol.
Storage:	Store at -20 °C for one year. Avoid repeated freeze/thaw cycles. The lyophilized antibody is stable at room temperature for at least one month and for greater than a year when kept at -20°C. When reconstituted in sterile pH 7.4 0.01M PBS or diluent of antibody the antibody is stable for at least two weeks at 2-4 °C.

PubMed:[PubMed](#)

The product of this gene belongs to the Serine/Threonine protein kinase family, and to the Ca(2+)/calmodulin-dependent protein kinase subfamily. This protein plays a role in the calcium/calmodulin-dependent (CaM) kinase cascade. Three transcript variants encoding two distinct isoforms have been identified for this gene. [provided by RefSeq, Jul 2008].

Function:

Calcium/calmodulin-dependent protein kinase that belongs to a proposed calcium-triggered signaling cascade involved in a number of cellular processes. Phosphorylates CAMK1, CAMK1D, CAMK1G and CAMK4. Involved in regulating cell apoptosis. Promotes cell survival by phosphorylating AKT1/PKB that inhibits pro-apoptotic BAD/Bcl2-antagonist of cell death.

Subunit:

Interacts with CAMK4 and calmodulin (By similarity).

Subcellular Location:

Cytoplasm. Nucleus.

Post-translational modifications:

Appears to be autophosphorylated in a Ca(2+)/calmodulin-dependent manner. Phosphorylated at multiple sites by PRCAKA/PKA. Phosphorylation of Ser-458 is blocked upon binding to Ca(2+)/calmodulin. In vitro, phosphorylated by CAMK1 and CAMK4 (By similarity).

Similarity:

Belongs to the protein kinase superfamily. Ser/Thr protein kinase family. Contains 1 protein kinase domain.

SWISS:

Q8N5S9

Gene ID:

84254

Database links:

[Entrez Gene: 84254](#) Human

[Entrez Gene: 55984](#) Mouse

[Omim: 611411](#) Human

[SwissProt: Q8N5S9](#) Human

Product Detail:

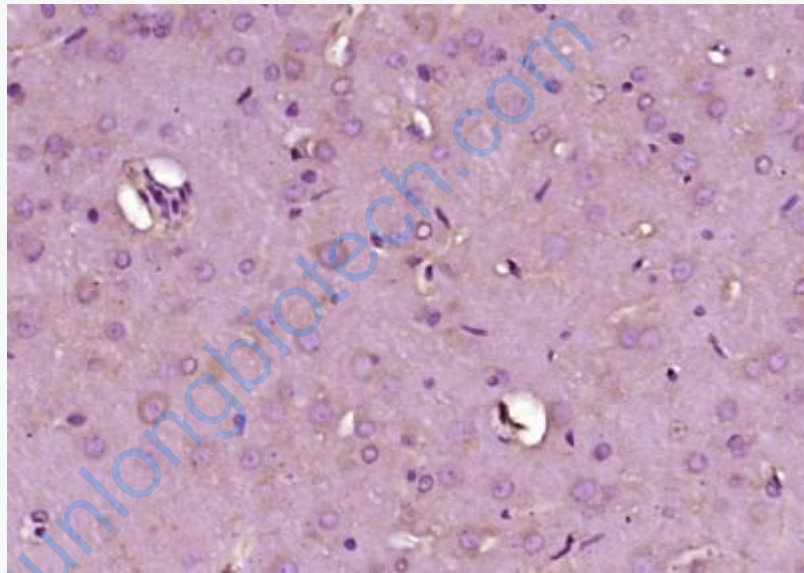
[SwissProt: Q8VBY2](#) Mouse

[Unigene: 8417](#) Human

[Unigene: 9998](#) Mouse

Important Note:

This product as supplied is intended for research use only, not for use in human, therapeutic or diagnostic applications.



Picture:

Paraformaldehyde-fixed, paraffin embedded (rat brain tissue); Antigen retrieval by boiling in sodium citrate buffer (pH6.0) for 15min; Block endogenous peroxidase by 3% hydrogen peroxide for 20 minutes; Blocking buffer (normal goat serum) at 37°C for 30min; Antibody incubation with (CaMKK1) Polyclonal Antibody, Unconjugated (SL11247R) at 1:400 overnight at 4°C, followed by operating according to SP Kit(Rabbit) (sp-0023) instructions and DAB staining.