



Rabbit Anti-RAB6A antibody

SL11259R

Product Name:	RAB6A
Chinese Name:	G蛋白Binding proteinRAB6A抗体
Alias:	GTP binding protein RAB6B; Oncogene RAB6; Rab GTPase; Rab6A variant 3; Rab 6; RAB6; RAB6 member RAS oncogene family; RAB6A member RAS oncogene family; Ras related protein Rab 6A; RCO4 3; RAB6A_HUMAN.
Organism Species:	Rabbit
Clonality:	Polyclonal
React Species:	Human,Mouse,Rat,Dog,Pig,Cow,Rabbit,,Zebrafish
Applications:	WB=1:500-2000ELISA=1:500-1000IHC-P=1:400-800IHC-F=1:400-800ICC=1:100-500IF=1:100-500 (Paraffin sections need antigen repair) not yet tested in other applications. optimal dilutions/concentrations should be determined by the end user.
Molecular weight:	23kDa
Cellular localization:	cytoplasmicThe cell membrane
Form:	Lyophilized or Liquid
Concentration:	1mg/ml
immunogen:	KLH conjugated synthetic peptide derived from human RAB6A:1-100/208
Lsotype:	IgG
Purification:	affinity purified by Protein A
Storage Buffer:	0.01M TBS(pH7.4) with 1% BSA, 0.03% Proclin300 and 50% Glycerol.
Storage:	Store at -20 °C for one year. Avoid repeated freeze/thaw cycles. The lyophilized antibody is stable at room temperature for at least one month and for greater than a year when kept at -20°C. When reconstituted in sterile pH 7.4 0.01M PBS or diluent of antibody the antibody is stable for at least two weeks at 2-4 °C.
PubMed:	PubMed
Product Detail:	The Ras-related superfamily of guanine nucleotide binding proteins, which includes the R-Ras, Rap, Ral/Rec and Rho/Rab subfamilies, exhibit 30-60% homology with Ras p21. Accumulating data suggests an important role for Rab proteins, either in endocytosis or in biosynthetic protein transport. The transport of newly synthesized proteins from the endoplasmic reticulum to various stacks of the Golgi complex and to secretory vesicles

involves, at each stage, the movement of carrier vesicles; a process that appears to involve Rab protein function. The possibility that Rab proteins might also direct the exocytosis from secretory vesicles to the plasma membrane is supported by the observation that in yeast, the Sec4 protein, which is 40% homologous to Rab proteins, is associated with secretory vesicles. At least eight members of the Rab subfamily have been identified, each of which is found at a particular stage of a membrane transport pathway. Rab 6, also known as RAB6B, RAB6A or RAB6A, is a 208 amino acid protein that is ubiquitously expressed and is a member of the small GTPase superfamily.

Function:

RAB6A belongs to the small GTPase superfamily. It may be involved in protein transport. It is a regulator of membrane traffic from the Golgi apparatus towards the endoplasmic reticulum (ER) and has a low GTPase activity.

Subunit:

Interacts with CCDC64; leads to its accumulation in the pericentrosomal region (By similarity). Interacts with SCYL1BP1. Interacts with VSP52 and RABGAP1. Interacts with GCC2 (via its GRIP domain). Interacts with RAB6IP1 (via its RUN 1 domain). Isoform 1 interacts with RAB6KIFL. Isoform 2 does not interact with RAB6KIFL. Isoform 1 interacts with BICD1. Isoform 2 interacts with BICD1. Isoform 1 interacts with BICD2. Isoform 2 interacts with BICD2. Interacts with TMF1. Isoform 1 (GTP-bound) interacts with DYNLRB1; the interaction is direct. Isoform 2 (GDP-bound) interacts with DYNLRB1; the interaction is direct. Interacts with PIFO.

Subcellular Location:

Golgi apparatus membrane; Lipid-anchor.

Tissue Specificity:

Ubiquitous.

Similarity:

Belongs to the small GTPase superfamily. Rab family.

SWISS:

P20340

Gene ID:

5870

Database links:

[Entrez Gene: 5870](#)Human

[Entrez Gene: 19346](#)Mouse

[Entrez Gene: 84379](#)Rat

[Oimim: 179513](#)Human

[SwissProt: P20340](#)Human

[SwissProt: P35279](#)Mouse

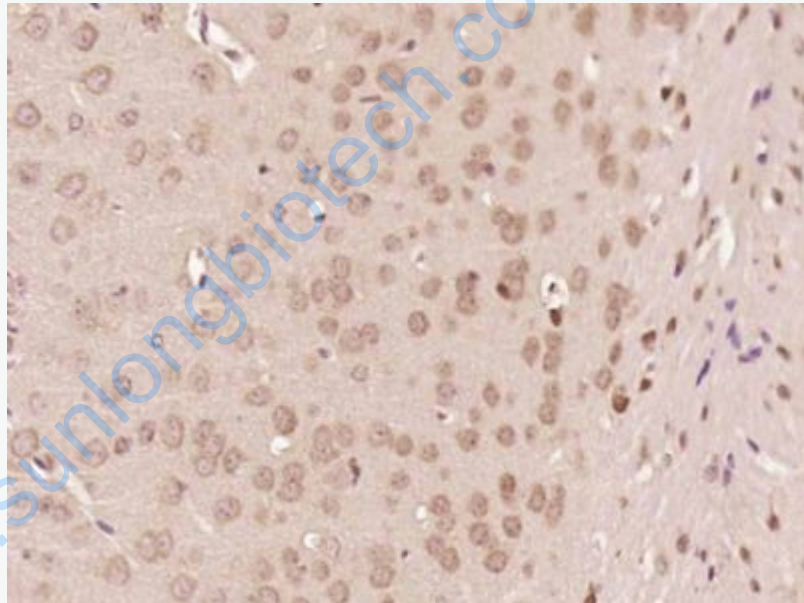
[SwissProt: Q9WVB1](#)Rat

[Unigene: 503222](#)Human

Important Note:

This product as supplied is intended for research use only, not for use in human, therapeutic or diagnostic applications.

Picture:



Paraformaldehyde-fixed, paraffin embedded (Mouse brain); Antigen retrieval by boiling in sodium citrate buffer (pH6.0) for 15min; Block endogenous peroxidase by 3% hydrogen peroxide for 20 minutes; Blocking buffer (normal goat serum) at 37°C for 30min; Antibody incubation with (RAB6A) Polyclonal Antibody, Unconjugated (SL11259R) at 1:400 overnight at 4°C, followed by operating according to SP Kit(Rabbit) (sp-0023) instructions and DAB staining.