



Rabbit Anti-GC1q R antibody

SL11263R

Product Name:	GC1q R
Chinese Name:	透明质酸Binding protein1 抗体
Alias:	C1q globular domain binding protein; C1QBP; GC1q R; C1QBP_HUMAN antibody Complement component 1 q subcomponent binding protein; Complement component 1 Q subcomponent binding protein mitochondrial; Complement component 1 Q subcomponent-binding protein, mitochondrial; GC1Q R; GC1q R protein; GC1q-R protein; GC1QBP; GC1QR; Glycoprotein gC1qBP; HABP 1; HABP1; Hyaluronan binding protein 1; Hyaluronan-binding protein 1; Mitochondrial matrix protein p32; p32 antibody p33 antibody Pre mrna splicing factor SF2 P32 subunit precursor; SF2p32; Splicing factor SF2 associated protein.
Organism Species:	Rabbit
Clonality:	Polyclonal
React Species:	Human,Mouse,Rat,Dog,Pig,Sheep,
Applications:	WB=1:500-2000ELISA=1:500-1000IHC-P=1:400-800IHC-F=1:400-800ICC=1:100-500IF=1:100-500 (Paraffin sections need antigen repair) not yet tested in other applications. optimal dilutions/concentrations should be determined by the end user.
Molecular weight:	24kDa
Cellular localization:	The nucleuscytoplasmic
Form:	Lyophilized or Liquid
Concentration:	1mg/ml
immunogen:	KLH conjugated synthetic peptide derived from human C1QBP:101-200/282
Lsotype:	IgG
Purification:	affinity purified by Protein A
Storage Buffer:	0.01M TBS(pH7.4) with 1% BSA, 0.03% Proclin300 and 50% Glycerol.
Storage:	Store at -20 °C for one year. Avoid repeated freeze/thaw cycles. The lyophilized antibody is stable at room temperature for at least one month and for greater than a year when kept at -20°C. When reconstituted in sterile pH 7.4 0.01M PBS or diluent of antibody the antibody is stable for at least two weeks at 2-4 °C.
PubMed:	PubMed

The human complement subcomponent C1q associates with C1r and C1s in order to yield the first component of the serum complement system (SCS). The SCS contains over 30 glycoproteins that influence physiological mechanisms of the body in response to immune complex (the classical pathway), carbohydrate (the lectin pathway) or bacterial (alternative pathway) initiation. C1q binding protein (C1QBP), also designated gC1q-R, p32 (p33) or HABP1 (hyaluronan-binding protein 1), is known to bind the globular heads of C1q molecules and inhibit C1 activation. C1QBP has been described as a complement receptor for C1q on B cells, neutrophils and mast cells. The C1QBP protein may form homodimers. C1QBP is expressed in vascular endothelial cells and has been found to be a multifunctional protein interacting with elements of complement, coagulation and kinin systems. In addition, C1QBP is a subunit of pre-mRNA splicing factor SF2/ASF.

Function:

Binds to the globular "heads" of C1Q thus inhibiting C1 activation.

Subunit:

Homotrimer; three monomers form a donut-shaped structure with an unusually asymmetric charge distribution on the surface. Interacts with CDK13, HRK, VTN, NFYB, ADRA1B, FOXC1, DDX21, DDX50, NCL, SRSF1, SRSF9 and CDKN2A isoform smARF. Interacts with CD93; the association may represent a cell surface C1q receptor. Interacts with KRT1; the association represents a cell surface kininogen receptor. Interacts with CD209; the interaction is indicative for a C1q:C1QBP:CD209 signaling complex. Interacts with FBL and RRP1; the respective interactions with C1QBP are competitive. Probably associates with the mitoribosome. Interacts with MAVS; the interaction occurs upon viral transfection. Interacts with PPIF. Interacts with Rubella virus capsid protein; the interaction occurs in mitochondria. Interacts with Rubella virus protease p150, Staphylococcus aureus protein A/spa, HIV-1 Tat and HCV core protein.

Subcellular Location:

Mitochondrion matrix. Nucleus. Might also be nuclear in some cell types.

Tissue Specificity:

Expressed on cell surface of peripheral blood cells (at protein level); Surface expression is reported for macrophages and monocyte-derived dendritic cells.

Similarity:

Belongs to the MAM33 family.

SWISS:

Q07021

Gene ID:

708

Product Detail:

Database links:

[Entrez Gene: 708](#) Human

[Entrez Gene: 12261](#) Mouse

[Entrez Gene: 29681](#) Rat

[Omim: 601269](#) Human

[SwissProt: Q07021](#) Human

[SwissProt: O35658](#) Mouse

[SwissProt: O35796](#) Rat

[Unigene: 555866](#) Human

[Unigene: 30049](#) Mouse

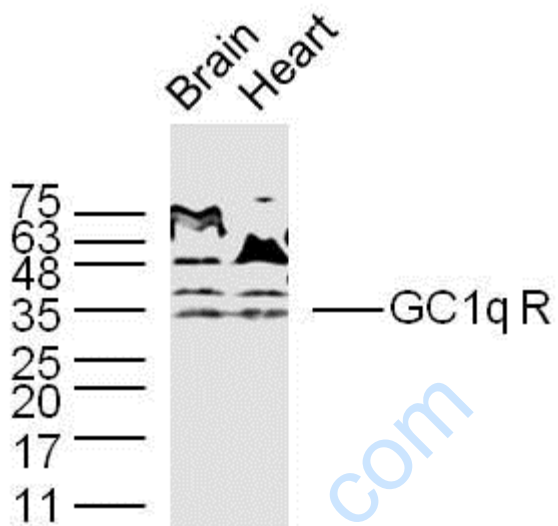
[Unigene: 2765](#) Rat

Important Note:

This product as supplied is intended for research use only, not for use in human, therapeutic or diagnostic applications.

www.sunlongbiotech.com

Picture:



Sample:

Brain(Mouse) Lysate at 40 ug

Heart(Mouse) Lysate at 40 ug

Primary: Anti- GC1q R(SL11263R)at 1/300 dilution

Secondary: IRDye800CW Goat Anti-Rabbit IgG at 1/20000 dilution

Predicted band size: 24 kD

Observed band size: 34 kD