



## Rabbit Anti-ESE1 antibody

SL11279R

<b>Product Name:</b>	ESE1
<b>Chinese Name:</b>	epithelial cells特异性转录因子1抗体
<b>Alias:</b>	ELF3; E74 like factor 3; E74 like factor 3 ets domain transcription factor; E74 like factor 3 ets domain transcription factor epithelial specific; E74 like factor 3 ETS domain transcription factor serine box epithelial specific; E74-like factor 3; Elf3; ELF3_HUMAN; Epithelial restricted with serine box; Epithelial-restricted with serine box; Epithelium restricted Ets protein ESX; Epithelium specific Ets factor 1; Epithelium specific Ets transcription factor 1; Epithelium-restricted Ets protein ESX; Epithelium-specific Ets transcription factor 1; EPR 1; EPR1; ERT; ESE-1; ESX; Ets domain transcription factor serine box; Ets domain transcription factor serine box epithelial specific; Ets transcription factor; ETS-related transcription factor Elf-3; jen; MGC139318.
<b>Organism Species:</b>	Rabbit
<b>Clonality:</b>	Polyclonal
<b>React Species:</b>	Human, Mouse, Rat, Dog, Cow, Sheep,
<b>Applications:</b>	WB=1:500-2000ELISA=1:500-1000IHC-P=1:400-800IHC-F=1:400-800ICC=1:100-500IF=1:100-500 (Paraffin sections need antigen repair) not yet tested in other applications. optimal dilutions/concentrations should be determined by the end user.
<b>Molecular weight:</b>	41kDa
<b>Cellular localization:</b>	The nucleuscytoplasmic
<b>Form:</b>	Lyophilized or Liquid
<b>Concentration:</b>	1mg/ml
<b>immunogen:</b>	KLH conjugated synthetic peptide derived from human ESE1:201-300/371
<b>Lsotype:</b>	IgG
<b>Purification:</b>	affinity purified by Protein A
<b>Storage Buffer:</b>	0.01M TBS(pH7.4) with 1% BSA, 0.03% Proclin300 and 50% Glycerol.
<b>Storage:</b>	Store at -20 °C for one year. Avoid repeated freeze/thaw cycles. The lyophilized antibody is stable at room temperature for at least one month and for greater than a year when kept at -20°C. When reconstituted in sterile pH 7.4 0.01M PBS or diluent of

	antibody the antibody is stable for at least two weeks at 2-4 °C.
<b>PubMed:</b>	<a href="#">PubMed</a>
<b>Product Detail:</b>	<p>ESE-1, a member of the Ets family of transcription factors, critically regulates epithelial cell differentiation and mediates vascular inflammation. ESE-1 is strongly expressed in vascular endothelium and smooth muscle cells where it is induced in response to inflammatory cytokines and lipopolysaccharides, interacts with NF-KappaB to induce nitric oxide synthase, and is induced during terminal differentiation of epidermal and primary keratinocytes. In addition, ESE-1 is upregulated upon differentiation of corneal epithelium and interacts with Sp1 and AP-1 proteins to induce squamous differentiation marker expression in bronchial epithelial cells.</p> <p><b>Function:</b> Transcriptional activator that binds and transactivates ETS sequences containing the consensus nucleotide core sequence GGA[AT]. Acts synergistically with POU2F3 to transactivate the SPRR2A promoter and with RUNX1 to transactivate the ANGPT1 promoter. Also transactivates collagenase, CCL20, CLND7, FLG, KRT8, NOS2, PTGS2, SPRR2B, TGFBR2 and TGM3 promoters. Represses KRT4 promoter activity. Involved in mediating vascular inflammation. May play an important role in epithelial cell differentiation and tumorigenesis. May be a critical downstream effector of the ERBB2 signaling pathway. May be associated with mammary gland development and involution. Plays an important role in the regulation of transcription with TATA-less promoters in preimplantation embryos, which is essential in preimplantation development.</p> <p><b>Subunit:</b> Interacts with TBP. Interacts with CREBBP and EP300; these act as transcriptional coactivators of ELF3 and positively modulate its function. Interacts with XRCC5/KU86 and XRCC6/KU70; these inhibit the ability of ELF3 to bind DNA and negatively modulate its transcriptional activity. Associated with CLND7 and POU2F3.</p> <p><b>Subcellular Location:</b> Cytoplasm. Nucleus. Localizes to the cytoplasm where it has been shown to transform MCF-12A mammary epithelial cells via a novel cytoplasmic mechanism. Also transiently expressed and localized to the nucleus where it induces apoptosis in non-transformed breast epithelial cells MCF-10A and MCF-12A via a transcription-dependent mechanism.</p> <p><b>Tissue Specificity:</b> Expressed exclusively in tissues containing a high content of terminally differentiated epithelial cells including mammary gland, colon, trachea, kidney, prostate, uterus, stomach and skin.</p> <p><b>Similarity:</b> Belongs to the ETS family. Contains 1 ETS DNA-binding domain. Contains 1 PNT (pointed) domain.</p>

**SWISS:**  
P78545

**Gene ID:**  
1999

**Database links:**

[Entrez Gene: 1999](#) Human

[Entrez Gene: 13710](#) Mouse

[Entrez Gene: 304815](#) Rat

[Omim: 602191](#) Human

[SwissProt: P78545](#) Human

[SwissProt: Q3UPW2](#) Mouse

[SwissProt: Q4V7E1](#) Rat

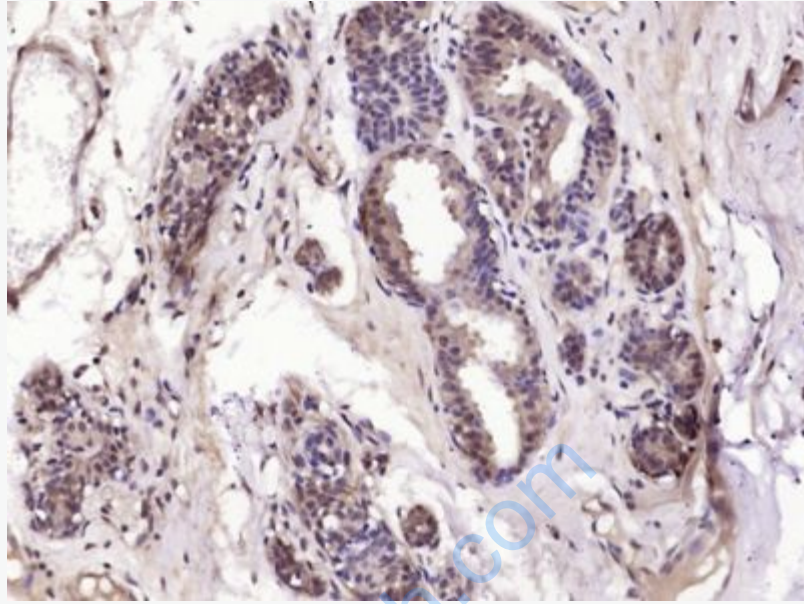
[Unigene: 67928](#) Human

[Unigene: 441439](#) Mouse

[Unigene: 3063](#) Rat

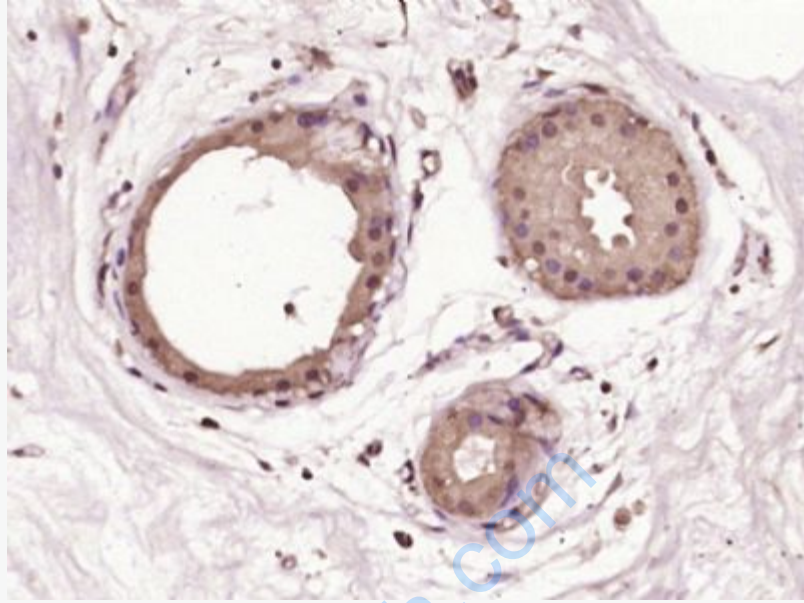
**Important Note:**

This product as supplied is intended for research use only, not for use in human, therapeutic or diagnostic applications.



**Picture:**

Paraformaldehyde-fixed, paraffin embedded (Human breast carcinoma); Antigen retrieval by boiling in sodium citrate buffer (pH6.0) for 15min; Block endogenous peroxidase by 3% hydrogen peroxide for 20 minutes; Blocking buffer (normal goat serum) at 37°C for 30min; Antibody incubation with (ESE1) Polyclonal Antibody, Unconjugated (SL11279R) at 1:400 overnight at 4°C, followed by operating according to SP Kit(Rabbit) (sp-0023) instructions and DAB staining.



Paraformaldehyde-fixed, paraffin embedded (Human breast); Antigen retrieval by boiling in sodium citrate buffer (pH6.0) for 15min; Block endogenous peroxidase by 3% hydrogen peroxide for 20 minutes; Blocking buffer (normal goat serum) at 37°C for 30min; Antibody incubation with (ESE1) Polyclonal Antibody, Unconjugated (SL11279R) at 1:400 overnight at 4°C, followed by operating according to SP Kit(Rabbit) (sp-0023) instructions and DAB staining.