



Rabbit Anti-beta Sarcoglycan antibody

SL1127R

Product Name:	beta Sarcoglycan
Chinese Name:	肌聚多糖-β抗体
Alias:	beta Sarcoglycan; beta-sarcoglycan; Sarcoglycan beta; BETA SARCOGLYCAN; A3b; LGMD2E; SGC; 43 kDa dystrophin associated glycoprotein; 43DAG; A3b; Beta SG; LGMD2E; SGC; SGCB; AI747103; AI844814; LOC687025; SGCB_HUMAN; Beta-sarcoglycan; Beta-SG; 43 kDa dystrophin-associated glycoprotein.
Organism Species:	Rabbit
Clonality:	Polyclonal
React Species:	Human,Mouse,Rat,Dog,Pig,Cow,Horse,Rabbit,
Applications:	IHC-P=1:400-800IHC-F=1:400-800IF=1:100-500 (Paraffin sections need antigen repair) not yet tested in other applications. optimal dilutions/concentrations should be determined by the end user.
Molecular weight:	35kDa
Cellular localization:	cytoplasmicThe cell membrane
Form:	Lyophilized or Liquid
Concentration:	1mg/ml
immunogen:	KLH conjugated synthetic peptide derived from human SGCB:165-260/318
Lsotype:	IgG
Purification:	affinity purified by Protein A
Storage Buffer:	0.01M TBS(pH7.4) with 1% BSA, 0.03% Proclin300 and 50% Glycerol.
Storage:	Store at -20 °C for one year. Avoid repeated freeze/thaw cycles. The lyophilized antibody is stable at room temperature for at least one month and for greater than a year when kept at -20°C. When reconstituted in sterile pH 7.4 0.01M PBS or diluent of antibody the antibody is stable for at least two weeks at 2-4 °C.
PubMed:	PubMed
Product Detail:	This gene encodes a member of the sarcoglycan family. Sarcoglycans are transmembrane components in the dystrophin-glycoprotein complex which help stabilize the muscle fiber membranes and link the muscle cytoskeleton to the extracellular matrix. Mutations in this gene have been associated with limb-girdle muscular dystrophy.

Function:

Component of the sarcoglycan complex, a subcomplex of the dystrophin-glycoprotein complex which forms a link between the F-actin cytoskeleton and the extracellular matrix. Tissue specificity: Highest expression in heart and skeletal muscle. Low expression in brain, kidney, placenta, pancreas and lung. High expression in fetal brain. Also found in fetal lung, kidney and liver. PTM: Disulfide bonds are present By similarity. Sequence similarities: Belongs to the sarcoglycan beta/delta/gamma/zeta family.

Subcellular Location:

Cell membrane; sarcolemma; single-pass type II membrane protein. Cytoplasm; cytoskeleton

SWISS:

Q16585

Gene ID:

6443

Database links:

[Entrez Gene: 6443](#) Human

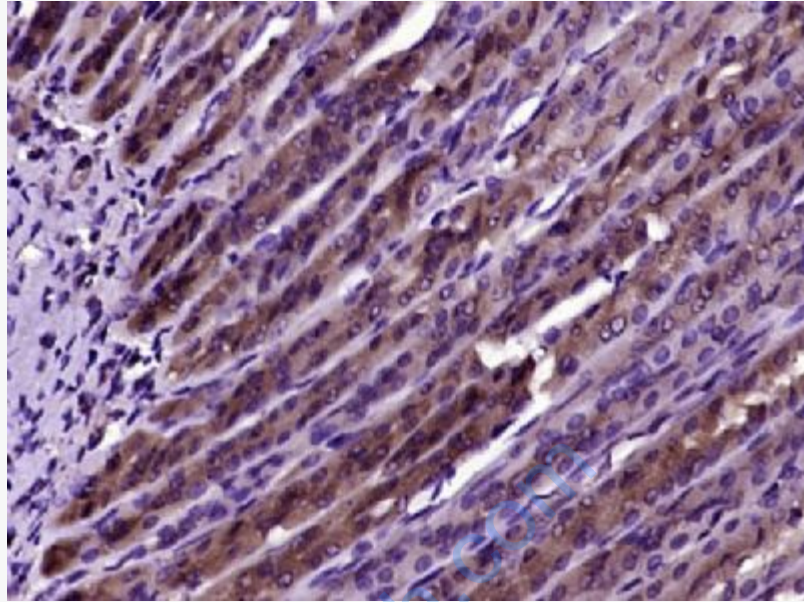
[Omir: 600900](#) Human

[SwissProt: Q16585](#) Human

[Unigene: 438953](#) Human

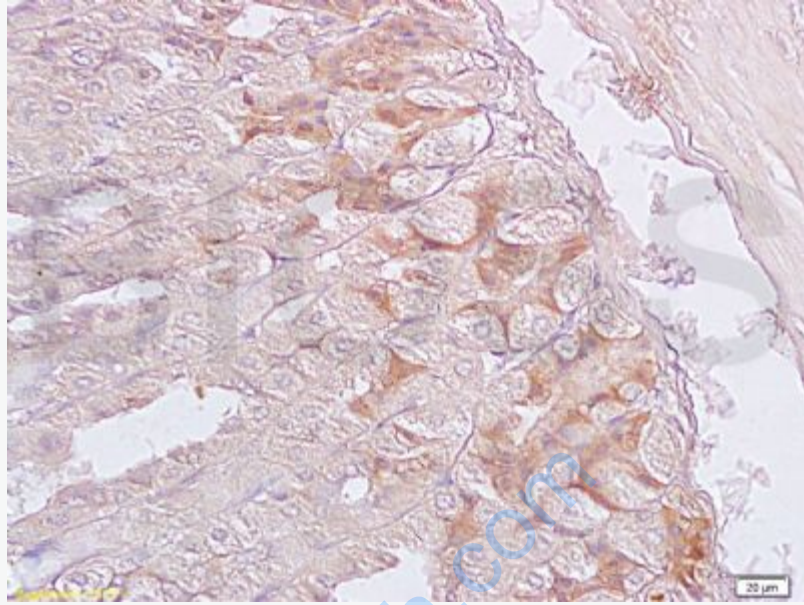
Important Note:

This product as supplied is intended for research use only, not for use in human, therapeutic or diagnostic applications.



Picture:

Paraformaldehyde-fixed, paraffin embedded (rat stomach tissue); Antigen retrieval by boiling in sodium citrate buffer (pH6.0) for 15min; Block endogenous peroxidase by 3% hydrogen peroxide for 20 minutes; Blocking buffer (normal goat serum) at 37°C for 30min; Antibody incubation with (SGCB) Polyclonal Antibody, Unconjugated (SL1127R) at 1:400 overnight at 4°C, followed by operating according to SP Kit(Rabbit) (sp-0023) instructions and DAB staining.



Tissue/cell: mouse stomach tissue; 4% Paraformaldehyde-fixed and paraffin-embedded;

Antigen retrieval: citrate buffer (0.01M, pH 6.0), Boiling bathing for 15min; Block endogenous peroxidase by 3% Hydrogen peroxide for 30min; Blocking buffer (normal goat serum,C-0005) at 37°C for 20 min;

Incubation: Anti-SGCB/SGC Polyclonal Antibody, Unconjugated(SL1127R) 1:200, overnight at 4°C, followed by conjugation to the secondary antibody(SP-0023) and DAB(C-0010) staining