



## Rabbit Anti-FGFBP2 antibody

SL11284R

<b>Product Name:</b>	FGFBP2
<b>Chinese Name:</b>	纤维细胞生长因子Binding protein2抗体
<b>Alias:</b>	KSP37; FGF-binding protein 2; FGF-BP2; FGFBP-2; FGFBP2; FGFBP2_HUMAN; Fibroblast growth factor-binding protein 2; HBp17-related protein; HBp17-RP; Ksp37; 37 kDa killer-specific secretory protein.
<b>Organism Species:</b>	Rabbit
<b>Clonality:</b>	Polyclonal
<b>React Species:</b>	Human,
<b>Applications:</b>	ELISA=1:500-1000IHC-P=1:400-800IHC-F=1:400-800ICC=1:100-500IF=1:100-500 (Paraffin sections need antigen repair) not yet tested in other applications. optimal dilutions/concentrations should be determined by the end user.
<b>Molecular weight:</b>	23kDa
<b>Cellular localization:</b>	Extracellular matrixSecretory protein
<b>Form:</b>	Lyophilized or Liquid
<b>Concentration:</b>	1mg/ml
<b>immunogen:</b>	KLH conjugated synthetic peptide derived from human FGFBP2/KSP37:121-220/223
<b>Lsotype:</b>	IgG
<b>Purification:</b>	affinity purified by Protein A
<b>Storage Buffer:</b>	0.01M TBS(pH7.4) with 1% BSA, 0.03% Proclin300 and 50% Glycerol.
<b>Storage:</b>	Store at -20 °C for one year. Avoid repeated freeze/thaw cycles. The lyophilized antibody is stable at room temperature for at least one month and for greater than a year when kept at -20°C. When reconstituted in sterile pH 7.4 0.01M PBS or diluent of antibody the antibody is stable for at least two weeks at 2-4 °C.
<b>PubMed:</b>	<a href="#">PubMed</a>
<b>Product Detail:</b>	KSP37 is a 223 amino acid protein that is secreted into the extracellular space and belongs to the fibroblast growth factor-binding protein family. Expressed in serum, as well as in cytotoxic T lymphocytes and peripheral leukocytes, KSP37 is thought to be involved in lymphocyte-mediated immunity, possibly playing a role in the development of asthma. The gene encoding KSP37 maps to human chromosome 4, which encodes

nearly 6% of the human genome and has the largest gene deserts (regions of the genome with no protein encoding genes) of all of the human chromosomes. Defects in some of the genes located on chromosome 4 are associated with Huntington's disease, Ellis-van Creveld syndrome, methylmalonic acidemia and polycystic kidney disease.

**Subcellular Location:**

Secreted. extracellular space.

**Tissue Specificity:**

Expressed in serum, peripheral leukocytes and cytotoxic T lymphocytes, but not in granulocytes and monocytes (at protein level).

**Similarity:**

Belongs to the fibroblast growth factor-binding protein family.

**SWISS:**

Q9BYJ0

**Gene ID:**

83888

**Database links:**

[Entrez Gene: 83888](#) Human

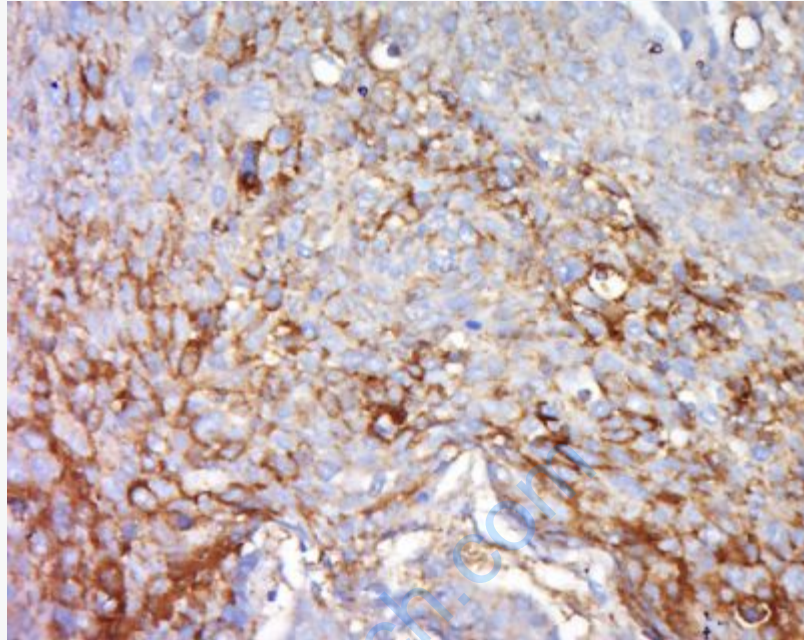
[Omim: 607713](#) Human

[SwissProt: Q9BYJ0](#) Human

[Unigene: 98785](#) Human

**Important Note:**

This product as supplied is intended for research use only, not for use in human, therapeutic or diagnostic applications.



**Picture:**

Tissue/cell: human lung carcinoma; 4% Paraformaldehyde-fixed and paraffin-embedded;

Antigen retrieval: citrate buffer ( 0.01M, pH 6.0 ), Boiling bathing for 15min; Block endogenous peroxidase by 3% Hydrogen peroxide for 30min; Blocking buffer (normal goat serum,C-0005) at 37°C for 20 min;

Incubation: Anti-FGFBP2 Polyclonal Antibody, Unconjugated(SL11284R) 1:500, overnight at 4°C, followed by conjugation to the secondary antibody(SP-0023) and DAB(C-0010) staining