



Rabbit Anti-CLIP2 antibody

SL11314R

Product Name:	CLIP2
Chinese Name:	细胞质连接蛋白2抗体
Alias:	CAP GLY domain containing linker protein 2; CAP-Gly domain-containing linker protein 2; CYLN2; CLIP 115; CLIP; CLIP-115; CLIP2; CLIP2_HUMAN; cytoplasmic linker 2; Cytoplasmic linker protein 115; Cytoplasmic linker protein 2; KIAA0291; MGC11333; restin; Similar to RESTIN (CYTOPLASMIC LINKER PROTEIN 170 ALPHA 2); WBSCR3; WBSCR4; Williams Beuren syndrome chromosome region 3; Williams Beuren syndrome chromosome region 4; Williams-Beuren syndrome chromosomal region 3 protein; Williams-Beuren syndrome chromosomal region 4 protein; WSCR3; WSCR4.
Organism Species:	Rabbit
Clonality:	Polyclonal
React Species:	Human,Mouse,Rat,Dog,Cow,Horse,Sheep,
Applications:	WB=1:500-2000ELISA=1:500-1000IHC-P=1:400-800IHC-F=1:400-800ICC=1:100-500IF=1:100-500 (Paraffin sections need antigen repair) not yet tested in other applications. optimal dilutions/concentrations should be determined by the end user.
Molecular weight:	116kDa
Cellular localization:	cytoplasmic
Form:	Lyophilized or Liquid
Concentration:	1mg/ml
immunogen:	KLH conjugated synthetic peptide derived from human CYLN2:901-1046/1046
Lsotype:	IgG
Purification:	affinity purified by Protein A
Storage Buffer:	0.01M TBS(pH7.4) with 1% BSA, 0.03% Proclin300 and 50% Glycerol.
Storage:	Store at -20 °C for one year. Avoid repeated freeze/thaw cycles. The lyophilized antibody is stable at room temperature for at least one month and for greater than a year when kept at -20°C. When reconstituted in sterile pH 7.4 0.01M PBS or diluent of antibody the antibody is stable for at least two weeks at 2-4 °C.
PubMed:	PubMed

The protein encoded by this gene belongs to the family of cytoplasmic linker proteins, which have been proposed to mediate the interaction between specific membranous organelles and microtubules. This protein was found to associate with both microtubules and an organelle called the dendritic lamellar body. This gene is hemizygotously deleted in Williams syndrome, a multisystem developmental disorder caused by the deletion of contiguous genes at 7q11.23. Alternative splicing of this gene generates 2 transcript variants. [provided by RefSeq, Jul 2008]

Function:

Seems to link microtubules to dendritic lamellar body (DLB), a membranous organelle predominantly present in bulbous dendritic appendages of neurons linked by dendrodendritic gap junctions. May operate in the control of brain-specific organelle translocations.

Subunit:

Interacts with CLASP1 and CLASP2.

Subcellular Location:

Cytoplasm. Cytoplasm; cytoskeleton. Associated with the cytoskeleton.

DISEASE:

Note=CLIP2 is located in the Williams-Beuren syndrome (WBS) critical region. WBS results from a hemizygous deletion of several genes on chromosome 7q11.23, thought to arise as a consequence of unequal crossing over between highly homologous low-copy repeat sequences flanking the deleted region. Haploinsufficiency of CLIP2 may be the cause of certain cardiovascular and musculo-skeletal abnormalities observed in the disease.

Similarity:

Contains 2 CAP-Gly domains.

SWISS:

Q9UDT6

Gene ID:

7461

Database links:

[Entrez Gene: 7461](#) Human

[Entrez Gene: 269713](#) Mouse

[Entrez Gene: 29264](#) Rat

[Omim: 603432](#) Human

Product Detail:

[SwissProt: Q9UDT6](#) Human

[SwissProt: Q9Z0H8](#) Mouse

[SwissProt: O55156](#) Rat

[Unigene: 647018](#) Human

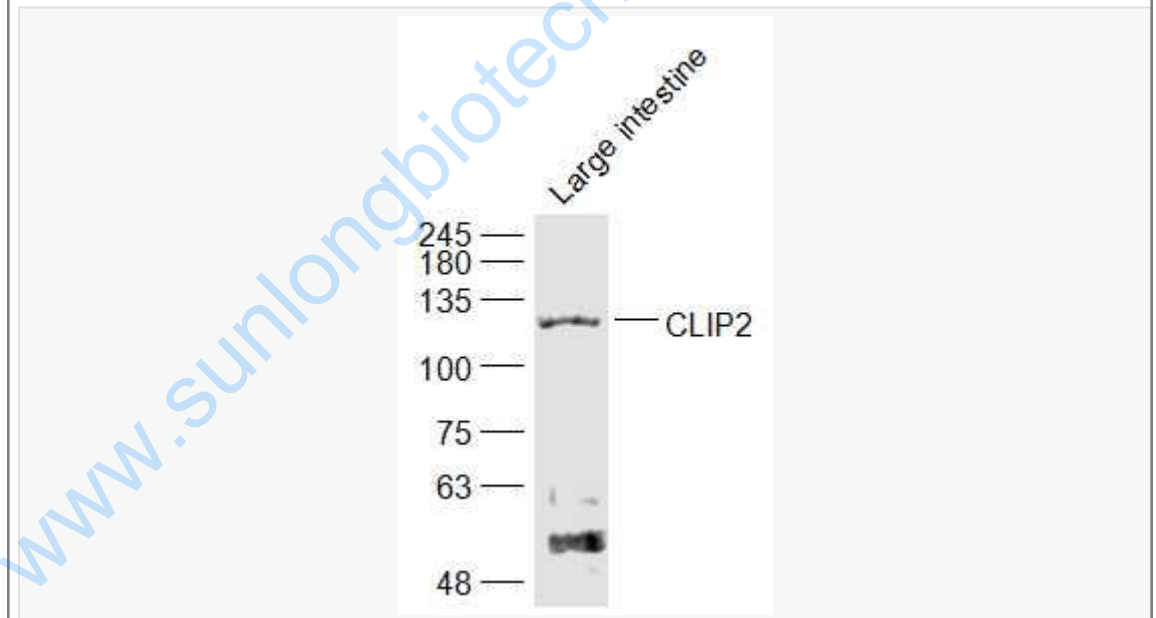
[Unigene: 255138](#) Mouse

[Unigene: 10893](#) Rat

Important Note:

This product as supplied is intended for research use only, not for use in human, therapeutic or diagnostic applications.

Picture:



Sample:

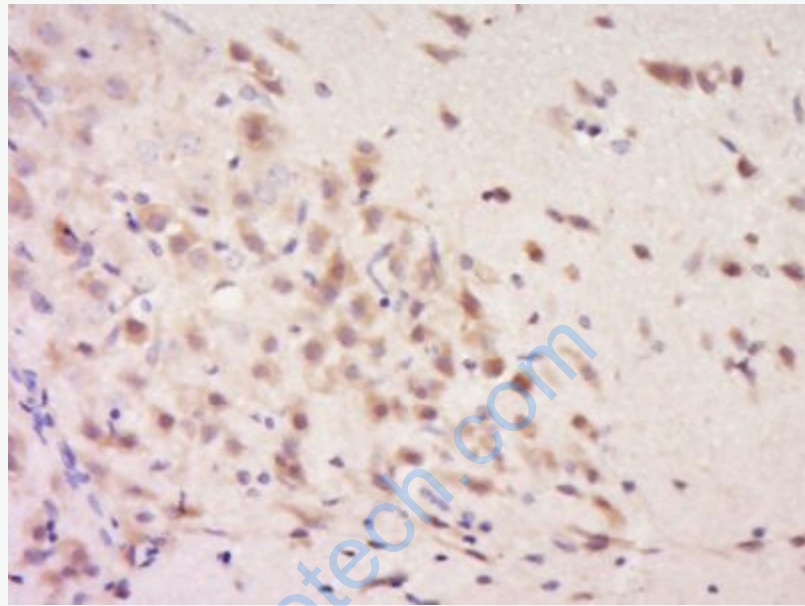
Large intestine (Mouse) Lysate at 40 ug

Primary: Anti-CLIP2 (SL11314R) at 1/300 dilution

Secondary: IRDye800CW Goat Anti-Rabbit IgG at 1/20000 dilution

Predicted band size: 116 kD

Observed band size: 116 kD



Paraformaldehyde-fixed, paraffin embedded (Rat brain); Antigen retrieval by boiling in sodium citrate buffer (pH6.0) for 15min; Block endogenous peroxidase by 3% hydrogen peroxide for 20 minutes; Blocking buffer (normal goat serum) at 37°C for 30min; Antibody incubation with (CLIP2) Polyclonal Antibody, Unconjugated (SL11314R) at 1:400 overnight at 4°C, followed by operating according to SP Kit(Rabbit) (sp-0023) instructions and DAB staining.