



Rabbit Anti-Nova2 antibody

SL11325R

Product Name:	Nova2
Chinese Name:	神经TumourNova2抗原抗体
Alias:	ANOVA; Astrocytic NOVA1 like RNA binding protein; Gm1424; NOVA2_HUMAN.
Organism Species:	Rabbit
Clonality:	Polyclonal
React Species:	Human,Mouse,Rat,Chicken,Dog,Rabbit,
Applications:	ELISA=1:500-1000IHC-P=1:400-800IHC-F=1:400-800Flow-Cyt=1µg/TestICC=1:100-500IF=1:100-500 (Paraffin sections need antigen repair) not yet tested in other applications. optimal dilutions/concentrations should be determined by the end user.
Molecular weight:	49kDa
Cellular localization:	The nucleus
Form:	Lyophilized or Liquid
Concentration:	1mg/ml
immunogen:	KLH conjugated synthetic peptide derived from human Nova2:401-492/492
Lsotype:	IgG
Purification:	affinity purified by Protein A
Storage Buffer:	0.01M TBS(pH7.4) with 1% BSA, 0.03% Proclin300 and 50% Glycerol.
Storage:	Store at -20 °C for one year. Avoid repeated freeze/thaw cycles. The lyophilized antibody is stable at room temperature for at least one month and for greater than a year when kept at -20°C. When reconstituted in sterile pH 7.4 0.01M PBS or diluent of antibody the antibody is stable for at least two weeks at 2-4 °C.
PubMed:	PubMed
Product Detail:	Nova-1 and Nova-2 are members of a superfamily of protein regulators of RNA metabolism in neurons. Both are nuclear RNA binding proteins with K homology motifs, conserved protein sequences which bind to RNA (1,2). Nova proteins, normally sequestered in the central nervous system, are expressed by systemic tumors in patients with the autoimmune disorder paraneoplastic opsoclonus-myoclonus ataxia (POMA) (3,4). Nova-1 is expressed in the hindbrain and ventral spinal cord and Nova-2 is expressed in the neocortex and hippocampus (4). Nova-1 is necessary for regulating

neuron-specific alternative splicing of the glycine receptor Alpha2 pre-mRNA (5).

Function:

NOVA2 may regulate RNA splicing or metabolism in a specific subset of developing neurons. It binds single strand RNA.

Subunit:

Interacts with PTBP2; the interaction is direct (By similarity).

Subcellular Location:

Nucleus.

Tissue Specificity:

Brain. Expression restricted to astrocytes.

Similarity:

Contains 3 KH domains.

SWISS:

Q9UNW9

Gene ID:

4858

Database links:

[Entrez Gene: 4858](#)Human

[Entrez Gene: 384569](#)Mouse

[Oimim: 601991](#)Human

[SwissProt: Q9UNW9](#)Human

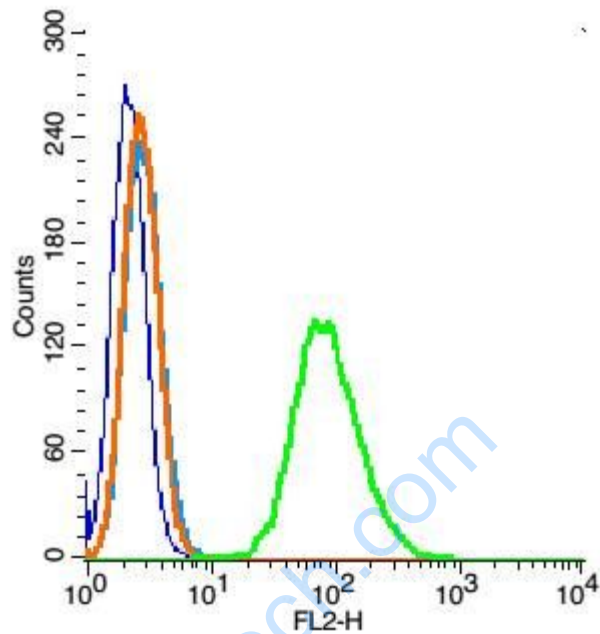
[Unigene: 375439](#)Human

[Unigene: 262724](#)Mouse

Important Note:

This product as supplied is intended for research use only, not for use in human, therapeutic or diagnostic applications.

Picture:



Blank control(blue): RSC96(fixed with 2% paraformaldehyde (10 min) , then permeabilized with 90% ice-cold methanol for 30 min on ice).

Primary Antibody:Rabbit Anti- Nova2 antibody(SL11325R), Dilution: 1 μ g in 100 μ L 1X PBS containing 0.5% BSA;

Isotype Control Antibody: Rabbit IgG(orange) ,used under the same conditions);

Secondary Antibody: Goat anti-rabbit IgG-PE(white blue), Dilution: 1:200 in 1 X PBS containing 0.5% BSA.