



## Rabbit Anti-AP180 antibody

SL11333R

<b>Product Name:</b>	AP180
<b>Chinese Name:</b>	装配衔接蛋白180抗体
<b>Alias:</b>	AP 180; AP3; Assembly Protein 180 kDa; Assembly Protein AP180; CALM; Clathrin coat assembly protein; Clathrin coat assembly protein AP180; Clathrin coat associated protein AP180; DKFZp781O051; F120; KIAA0656; NP185; pp155; SNAP 91; SNAP91; 91kDa synaptosomal associated protein; Synaptosomal associated protein 91 kD homolog; Synaptosomal associated protein 91 kDa homolog; AP180 HUMAN.
<b>Organism Species:</b>	Rabbit
<b>Clonality:</b>	Polyclonal
<b>React Species:</b>	Human,Mouse,Rat,Chicken,Dog,Pig,Cow,Horse,Sheep,
<b>Applications:</b>	WB=1:500-2000ELISA=1:500-1000IHC-P=1:400-800IHC-F=1:400-800ICC=1:100-500IF=1:100-500 (Paraffin sections need antigen repair) not yet tested in other applications. optimal dilutions/concentrations should be determined by the end user.
<b>Molecular weight:</b>	92kDa
<b>Cellular localization:</b>	cytoplasmicThe cell membrane
<b>Form:</b>	Lyophilized or Liquid
<b>Concentration:</b>	1mg/ml
<b>immunogen:</b>	KLH conjugated synthetic peptide derived from human AP180:201-300/907
<b>Lsotype:</b>	IgG
<b>Purification:</b>	affinity purified by Protein A
<b>Storage Buffer:</b>	0.01M TBS(pH7.4) with 1% BSA, 0.03% Proclin300 and 50% Glycerol.
<b>Storage:</b>	Store at -20 °C for one year. Avoid repeated freeze/thaw cycles. The lyophilized antibody is stable at room temperature for at least one month and for greater than a year when kept at -20°C. When reconstituted in sterile pH 7.4 0.01M PBS or diluent of antibody the antibody is stable for at least two weeks at 2-4 °C.
<b>PubMed:</b>	<a href="#">PubMed</a>
<b>Product Detail:</b>	Clathrin-coated pits and vesicles are assembled for receptor-mediated endocytosis through interaction with Clathrin associated protein complexes. Vesicle transport is mediated from the trans-Golgi network by the adapter complex AP-1 and from the

plasma membrane by the AP-2 complex. The AP-1 and AP-2 adapter protein complexes consist of Clathrin binding Adaptin proteins (g and b1 for AP-1, a and b2 for AP-2) and two smaller subunits known as AP50 and AP17. The a and b Adaptin chains have a similar two-domain organization with C-terminal domains that vary in both sequence and length. a-Adaptin splice variants A and C display variable relative expression levels and differential distribution in different tissues. AP-3 (also designated AP180 or F1-20) is a synapse-specific Clathrin assembly protein. The protein CALM (Clathrin assembly protein lymphoid myeloid leukemia) is highly homologous to AP180 and may also be involved in Clathrin assembly.

**Function:**

AP180 is a clathrin binding phospho-protein and facilitates the formation of clathrin coats. This protein is also known as pp155, NP185, F1-20, and AP-3. During neurotransmitter release synaptic vesicles fuse with the presynaptic plasma membrane. A whole protein machinery consisting of amphiphysin, clathrin, endophilin and synaptojanin is involved in the subsequent endocytotic recycling of the synaptic vesicles.

**Subunit:**

Binds AP2A2. Interacts with AP2B1; clathrin competes with SNAP91 (By similarity).

**Subcellular Location:**

Component of the coat surrounding the cytoplasmic face of coated vesicles in the plasma membrane.

**Post-translational modifications:**

Thr-310 can be modified by the addition of N-acetylglucosamine which can be further phosphorylated. There is no evidence for direct Thr-310 phosphorylation (By similarity).

**Similarity:**

Contains 1 ENTH (epsin N-terminal homology) domain.

**SWISS:**

O60641

**Gene ID:**

9892

**Database links:**

[Entrez Gene: 9892](#) Human

[Entrez Gene: 20616](#) Mouse

[Entrez Gene: 65178](#) Rat

[Omim: 607923](#) Human

[SwissProt: O60641](#) Human

[SwissProt: Q61548](#) Mouse

[SwissProt: Q05140](#) Rat

[Unigene: 368046](#) Human

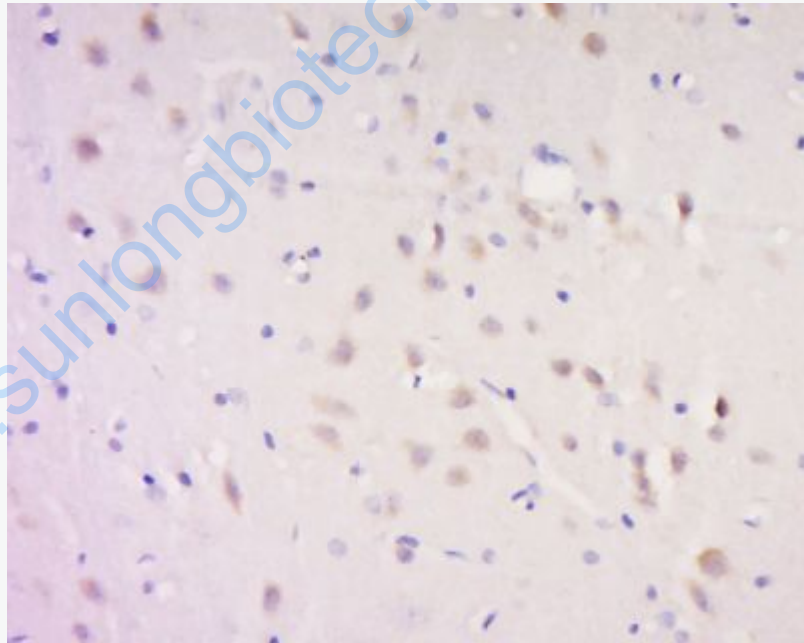
[Unigene: 281651](#) Mouse

[Unigene: 11022](#) Rat

**Important Note:**

This product as supplied is intended for research use only, not for use in human, therapeutic or diagnostic applications.

**Picture:**



Tissue/cell: Rat brain tissue; 4% Paraformaldehyde-fixed and paraffin-embedded;

Antigen retrieval: citrate buffer ( 0.01M, pH 6.0 ), Boiling bathing for 15min; Block endogenous peroxidase by 3% Hydrogen peroxide for 30min; Blocking buffer (normal goat serum,C-0005) at 37°C for 20 min;

Incubation: Anti-AP180 Polyclonal Antibody, Unconjugated(SL11333R) 1:500,

	overnight at 4°C, followed by conjugation to the secondary antibody(SP-0023) and DAB(C-0010) staining
--	---

[www.sunlongbiotech.com](http://www.sunlongbiotech.com)