



Rabbit Anti-C1Q antibody

SL11336R

Product Name:	C1Q
Chinese Name:	补体C1q α 链多肽抗体
Alias:	C1QA; C1QA_HUMAN; C1QB; C1QC; Complement C1q subcomponent subunit A; Complement C1q subcomponent subunit B; Complement C1q subcomponent subunit C; Complement component 1 q subcomponent A chain; Complement component 1 q subcomponent alpha polypeptide; Complement component C1q A chain; Complement component C1q B chain; Complement component C1q C chain.
Organism Species:	Rabbit
Clonality:	Polyclonal
React Species:	Human,Mouse,Rat,
Applications:	WB=1:50-200IHC-P=1:50-200IHC-F=1:50-200 (Paraffin sections need antigen repair) not yet tested in other applications. optimal dilutions/concentrations should be determined by the end user.
Molecular weight:	24kDa
Cellular localization:	Secretory protein
Form:	Lyophilized or Liquid
Concentration:	1mg/ml
immunogen:	KLH conjugated synthetic peptide derived from human C1QA:61-160/245
Lsotype:	IgG
Purification:	affinity purified by Protein A
Storage Buffer:	0.01M TBS(pH7.4) with 1% BSA, 0.03% Proclin300 and 50% Glycerol.
Storage:	Store at -20 °C for one year. Avoid repeated freeze/thaw cycles. The lyophilized antibody is stable at room temperature for at least one month and for greater than a year when kept at -20°C. When reconstituted in sterile pH 7.4 0.01M PBS or diluent of antibody the antibody is stable for at least two weeks at 2-4 °C.
PubMed:	PubMed
Product Detail:	C1q, a subcomponent of the classical complement pathway, is composed of nine subunits that mediate classical complement activation and thereby play an important role in the immune response. Six of these subunits are disulfide-linked dimers of chains A and B, while three of these subunits, designated C1q-A through C1q-C, are disulfide-

linked dimers of chain C. The presence of receptors for C1q on effector cells modulates its activity, which may be antibody-dependent or independent. Macrophages are the primary source of C1q, while anti-inflammatory drugs as well as cytokines differentially regulate expression of the mRNA as well as the protein. However, its ability to modulate the interaction of platelets with collagen and immune complexes suggests C1q influences homeostasis as well as other immune activities, and perhaps thrombotic complications resulting from immune injury. Defects in C1q-A, C1q-B and C1q-C cause inactivation of the classical pathway, leading to a rare genetic disorder characterized by lupus-like symptoms.

Function:

C1q associates with the proenzymes C1r and C1s to yield C1, the first component of the serum complement system. The collagen-like regions of C1q interact with the Ca(2+)-dependent C1r(2)C1s(2) proenzyme complex, and efficient activation of C1 takes place on interaction of the globular heads of C1q with the Fc regions of IgG or IgM antibody present in immune complexes.

Subunit:

C1 is a calcium-dependent trimolecular complex of C1q, R and S in the molar ratio of 1:2:2. C1q subcomponent is composed of nine subunits, six of which are disulfide-linked dimers of the A and B chains, and three of which are disulfide-linked dimers of the C chain.

Subcellular Location:

Secreted.

Post-translational modifications:

O-linked glycans consist of Glc-Gal disaccharides bound to the oxygen atom of post-translationally added hydroxyl groups.

DISEASE:

Defects in C1QA are the cause of complement component C1qA deficiency (C1QAD) [MIM:120550]. A rare defect resulting in C1 deficiency and impaired activation of the complement classical pathway. C1 deficiency generally leads to severe immune complex disease with features of systemic lupus erythematosus and glomerulonephritis.

Similarity:

Contains 1 C1q domain.
Contains 1 collagen-like domain.

SWISS:

P02745

Gene ID:

712

Database links:

[Entrez Gene: 712](#)Human

[Entrez Gene: 12259](#)Mouse

[Entrez Gene: 29687](#)Rat

[Olim: 120550](#)Human

[SwissProt: P02745](#)Human

[SwissProt: P14106](#)Mouse

[SwissProt: P31720](#)Rat

[Unigene: 632379](#)Human

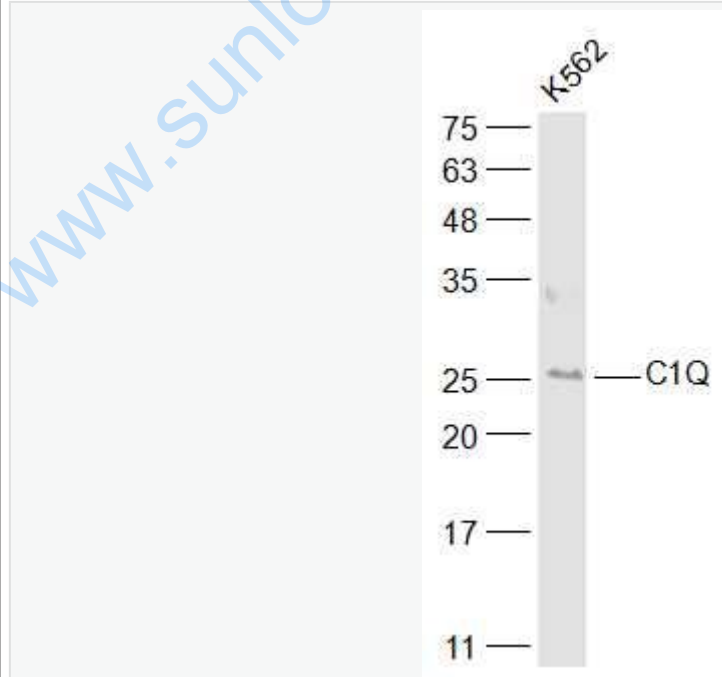
[Unigene: 439957](#)Mouse

[Unigene: 105647](#)Rat

Important Note:

This product as supplied is intended for research use only, not for use in human, therapeutic or diagnostic applications.

Picture:



Sample:

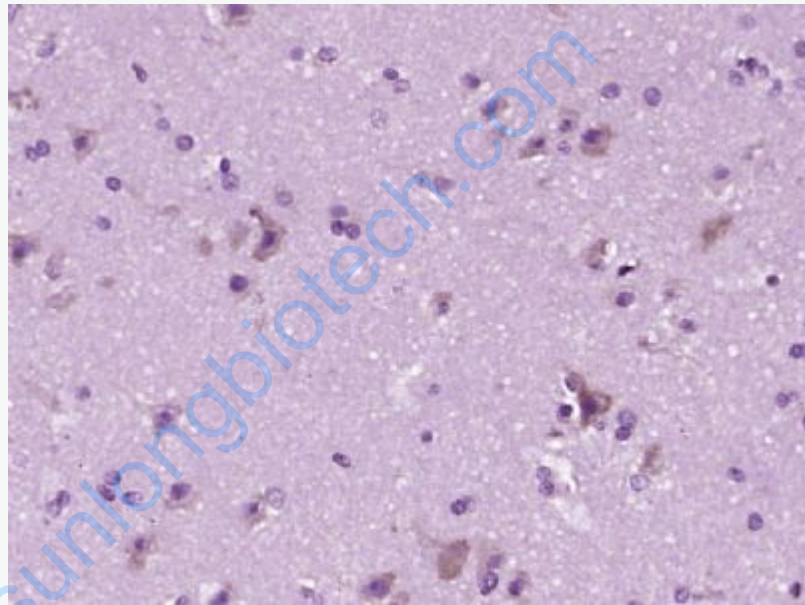
K562(Human) Cell Lysate at 30 ug

Primary: Anti-C1Q (SL11336R) at 1/1000 dilution

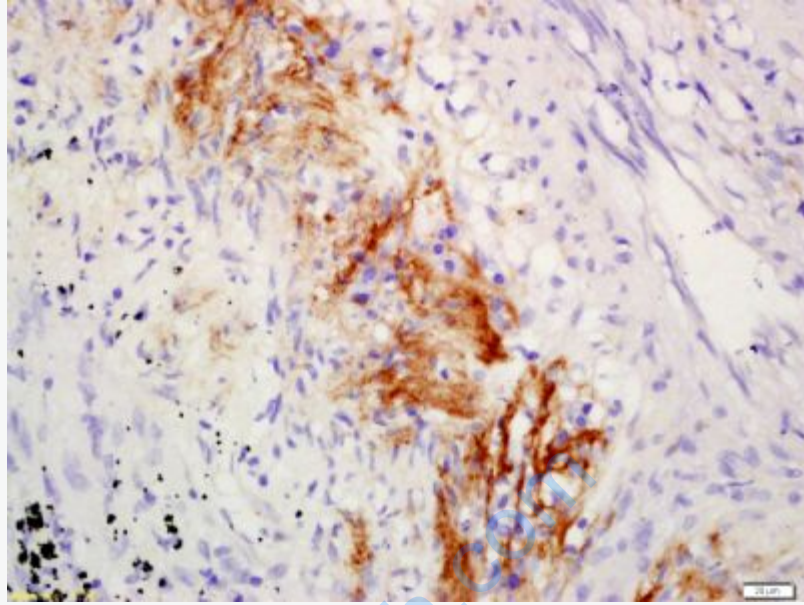
Secondary: IRDye800CW Goat Anti-Rabbit IgG at 1/20000 dilution

Predicted band size: 24 kD

Observed band size: 25 kD



Paraformaldehyde-fixed, paraffin embedded (human brain glioma); Antigen retrieval by boiling in sodium citrate buffer (pH6.0) for 15min; Block endogenous peroxidase by 3% hydrogen peroxide for 20 minutes; Blocking buffer (normal goat serum) at 37°C for 30min; Antibody incubation with (C1Q) Polyclonal Antibody, Unconjugated (SL11336R) at 1:400 overnight at 4°C, followed by operating according to SP Kit(Rabbit) (sp-0023) instructions and DAB staining.



Tissue/cell: human lung carcinoma; 4% Paraformaldehyde-fixed and paraffin-embedded;

Antigen retrieval: citrate buffer (0.01M, pH 6.0), Boiling bathing for 15min; Block endogenous peroxidase by 3% Hydrogen peroxide for 30min; Blocking buffer (normal goat serum,C-0005) at 37°C for 20 min;

Incubation: Anti-C1Q Polyclonal Antibody, Unconjugated(SL11336R) 1:200, overnight at 4°C, followed by conjugation to the secondary antibody(SP-0023) and DAB(C-0010) staining