



## Rabbit Anti-MAGI1 antibody

SL11352R

<b>Product Name:</b>	MAGI1
<b>Chinese Name:</b>	膜相关鸟苷酸反转激酶1抗体
<b>Alias:</b>	MAGI1_HUMAN; Membrane-associated guanylate kinase, WW and PDZ domain-containing protein 1; Atrophin-1-interacting 3; AIP-3; BAI1-associated protein 1; BAP-1; Membrane-associated guanylate kinase inverted 1; MAGI-1; Trinucleotide repeat-containing gene 19 protein; WW domain-containing protein 3; WWP3; MAGI1; AIP3; BAIAP1; BAP1; TNRC19.
<b>Organism Species:</b>	Rabbit
<b>Clonality:</b>	Polyclonal
<b>React Species:</b>	Human,Mouse,Rat,Chicken,Dog,Pig,Cow,Rabbit,Sheep,
<b>Applications:</b>	WB=1:500-2000ELISA=1:500-1000IHC-P=1:400-800IHC-F=1:400-800ICC=1:100-500IF=1:100-500 (Paraffin sections need antigen repair) not yet tested in other applications. optimal dilutions/concentrations should be determined by the end user.
<b>Molecular weight:</b>	137kDa
<b>Cellular localization:</b>	The cell membrane
<b>Form:</b>	Lyophilized or Liquid
<b>Concentration:</b>	1mg/ml
<b>immunogen:</b>	KLH conjugated synthetic peptide derived from human MAGI1:161-260/1491
<b>Lsotype:</b>	IgG
<b>Purification:</b>	affinity purified by Protein A
<b>Storage Buffer:</b>	0.01M TBS(pH7.4) with 1% BSA, 0.03% Proclin300 and 50% Glycerol.
<b>Storage:</b>	Store at -20 °C for one year. Avoid repeated freeze/thaw cycles. The lyophilized antibody is stable at room temperature for at least one month and for greater than a year when kept at -20°C. When reconstituted in sterile pH 7.4 0.01M PBS or diluent of antibody the antibody is stable for at least two weeks at 2-4 °C.
<b>PubMed:</b>	<a href="#">PubMed</a>
<b>Product Detail:</b>	The membrane-associated guanylate kinase (MAGUK) proteins are concentrated at the membrane-cytoskeletal interface where they facilitate the assembly of multiprotein complexes on the inner surface of the plasma membrane. Three protein-protein

interaction modules characteristically define MAGUK related proteins: the PDZ domain, the SH3 domain and the guanylate kinase (GuK) domain. The closely related MAGUK proteins, MAGI-1, MAGI-2 and MAGI-3 (membrane associated guanylate kinase inverted-1 and 2), likewise contain the GuK domain and five PDZ domains; however, the SH3 domain is replaced with a WW domain. The transcripts of MAGI-1 are alternatively spliced to produce three distinct proteins having unique C-terminals. Two variants, MAGI-1a and MAGI-1b, are associated with the membrane and cytosolic fractions and are primarily expressed in the brain. The third isoform, MAGI-1c, encodes for a nuclear localization signal that localizes MAGI-1c to the nucleus, and it is primarily expressed in the liver and kidney. MAGI-2 and MAGI-3 are localized to the plasma membrane, and they contribute to protein scaffolding by associating with the protein phosphatase PTEN.

**Function:**

May play a role as scaffolding protein at cell-cell junctions. May regulate acid-induced ASIC3 currents by modulating its expression at the cell surface (By similarity).

**Subunit:**

Interacts through its WW 2 domain with SYNPO and through its PDZ 5 domain with ACTN4. Interacts with cytoplasmic domain of BAI1. Interacts via its WW domains with DRPLA. Interacts with ESAM, LRP2 and CXADR. May interact with CTNNB1. Interacts through its PDZ 1 domain with NET1 (By similarity). Interacts with ASIC3 and AMOT. Interacts with FCHSD2. Interacts with IGSF5/JAM4 and through its PDZ 2 and 3 domains with NPHS1 forming a tripartite complex (By similarity). Interacts with DDN.

**Subcellular Location:**

Cell junction; cell membrane; tight junction; peripheral membrane protein. Localizes to epithelial cells tight junctions.

**Tissue Specificity:**

Widely expressed with the exception of skeletal muscle. Isoform 1, isoform 2 and isoform 6 are highly expressed in colon, kidney, lung, liver, and pancreas. Isoform 5 is predominantly expressed in brain and heart. Isoform 3 and isoform 4 are highly expressed in pancreas and brain.

**Similarity:**

Contains 1 guanylate kinase-like domain.  
Contains 6 PDZ (DHR) domains.  
Contains 2 WW domains.

**SWISS:**

Q96QZ7

**Gene ID:**

9223

**Database links:**

[Entrez Gene: 9223](#) Human

[Entrez Gene: 14924](#) Mouse

[Omim: 602625](#) Human

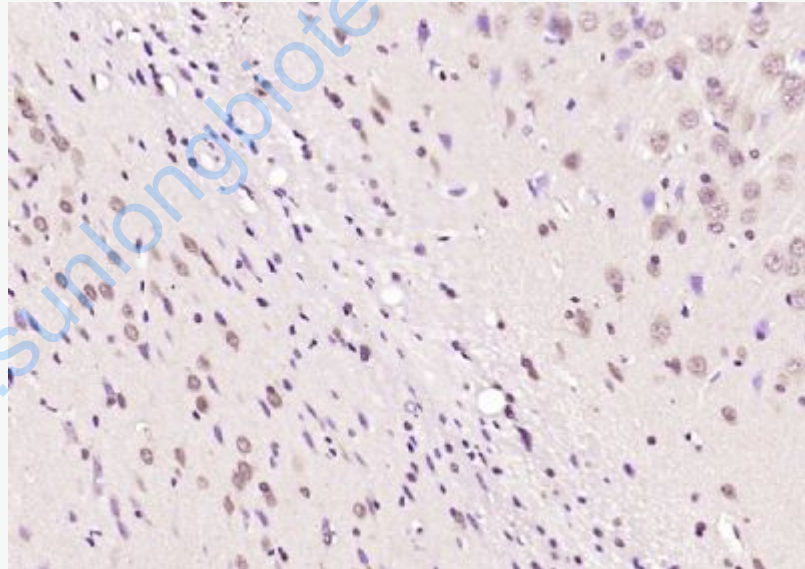
[SwissProt: Q96QZ7](#) Human

[SwissProt: Q6RHR9](#) Mouse

**Important Note:**

This product as supplied is intended for research use only, not for use in human, therapeutic or diagnostic applications.

**Picture:**



Paraformaldehyde-fixed, paraffin embedded (rat brain); Antigen retrieval by boiling in sodium citrate buffer (pH6.0) for 15min; Block endogenous peroxidase by 3% hydrogen peroxide for 20 minutes; Blocking buffer (normal goat serum) at 37°C for 30min; Antibody incubation with (MAGI1) Polyclonal Antibody, Unconjugated (SL11352R) at 1:200 overnight at 4°C, followed by operating according to SP

Kit(Rabbit) (sp-0023) instructions and DAB staining.

[www.sunlongbiotech.com](http://www.sunlongbiotech.com)