



## Rabbit Anti-SYNPR/Synaptoporin antibody

SL11367R

<b>Product Name:</b>	SYNPR/Synaptoporin
<b>Chinese Name:</b>	突触囊泡蛋白抗体
<b>Alias:</b>	SPO; Synaptophysin 2; Synaptoporin; Synpr; SYNPR_HUMAN; DKFZp686G0883; MGC26651.
<b>文献引用</b> <b>PubMed</b> :	<b>Specific References(1)</b>  SL11367R has been referenced in 1 publications. <b>[IF=7.26]</b> Zhang, Chi, et al. "The potential use of H102 peptide-loaded dual-functional nanoparticles in the treatment of Alzheimer's disease." Journal of Controlled Release (2014). <b>WB;Mouse.</b> <a href="#">PubMed:25102404</a>
<b>Organism Species:</b>	Rabbit
<b>Clonality:</b>	Polyclonal
<b>React Species:</b>	Human,Mouse,Rat,
<b>Applications:</b>	WB=1:500-2000ELISA=1:500-1000IHC-P=1:400-800IHC-F=1:400-800Flow-Cyt=1µg/TestICC=1:100-500IF=1:100-500 (Paraffin sections need antigen repair) not yet tested in other applications. optimal dilutions/concentrations should be determined by the end user.
<b>Molecular weight:</b>	29kDa
<b>Cellular localization:</b>	cytoplasmicThe cell membrane
<b>Form:</b>	Lyophilized or Liquid
<b>Concentration:</b>	1mg/ml
<b>immunogen:</b>	KLH conjugated synthetic peptide derived from human Synaptoporin:31-130/265
<b>Lsotype:</b>	IgG
<b>Purification:</b>	affinity purified by Protein A
<b>Storage Buffer:</b>	0.01M TBS(pH7.4) with 1% BSA, 0.03% Proclin300 and 50% Glycerol.
<b>Storage:</b>	Store at -20 °C for one year. Avoid repeated freeze/thaw cycles. The lyophilized antibody is stable at room temperature for at least one month and for greater than a year when kept at -20°C. When reconstituted in sterile pH 7.4 0.01M PBS or diluent of

	antibody the antibody is stable for at least two weeks at 2-4 °C.
<b>PubMed:</b>	<a href="#">PubMed</a>
<b>Product Detail:</b>	<p>Synaptic vesicle recycling involves numerous proteins that contribute to the formation and trafficking of the SNARE complexes throughout the cell. Synaptoporin, also designated synaptophysin 2, is an integral membrane protein of small synaptic vesicles that belongs to the synaptophysin/synaptobrevin family. Synaptoporin is highly homologous to Synaptophysin 1 and both Synaptoporin and synaptophysin 1 contain four transmembrane domains and a short cytoplasmic tail. The Synaptoporin protein also contains one MARVEL domain, a membrane-associating domain found in lipid-associating proteins, and displays calcium-binding activity which may be localized to its cytoplasmic tail. Syntaphilin, synaptophysin and Synaptoporin regulate the formation of the vesicles by competing with components of the SNARE complexes to respectively inhibit either the assembly or the secretion of the synaptic vesicles.</p> <p><b>Function:</b> Intrinsic membrane protein of small synaptic vesicles. Probable vesicular channel protein.</p> <p><b>Subcellular Location:</b> Cytoplasmic vesicle &gt; secretory vesicle &gt; synaptic vesicle membrane. Cell junction &gt; synapse &gt; synaptosome.</p> <p><b>Similarity:</b> Belongs to the synaptophysin/synaptobrevin family. Contains 1 MARVEL domain.</p> <p><b>SWISS:</b> Q8TBG9</p> <p><b>Gene ID:</b> 132204</p> <p><b>Database links:</b></p> <p><a href="#">Entrez Gene: 132204</a>Human</p> <p><a href="#">Entrez Gene: 72003</a>Mouse</p> <p><a href="#">Entrez Gene: 66030</a>Rat</p> <p><a href="#">SwissProt: Q8TBG9</a>Human</p> <p><a href="#">SwissProt: Q8BGN8</a>Mouse</p> <p><a href="#">SwissProt: P22831</a>Rat</p>

[Unigene: 648668](#)Human

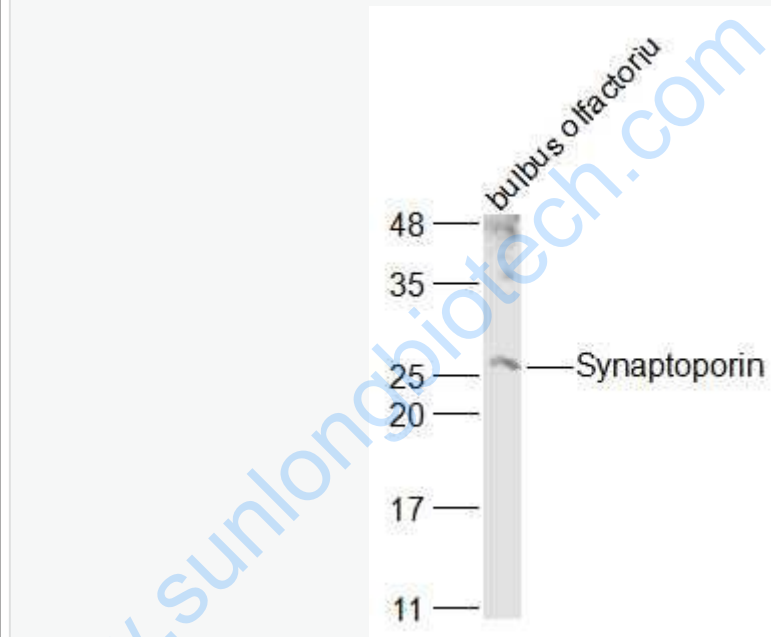
[Unigene: 317515](#)Mouse

[Unigene: 211986](#)Rat

**Important Note:**

This product as supplied is intended for research use only, not for use in human, therapeutic or diagnostic applications.

**Picture:**



Sample:

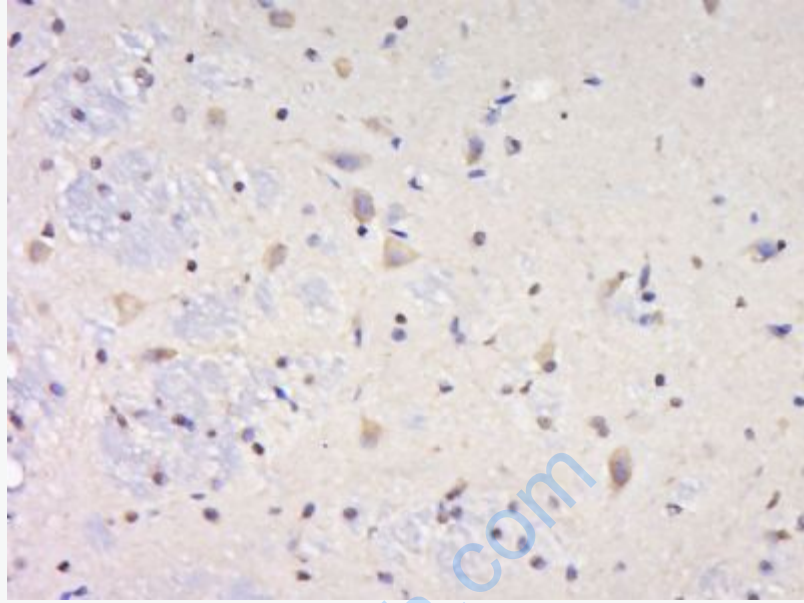
Bulbus olfactorius (Rat) Lysate at 40 ug

Primary: Anti-Synaptoporin (SL11367R) at 1/1000 dilution

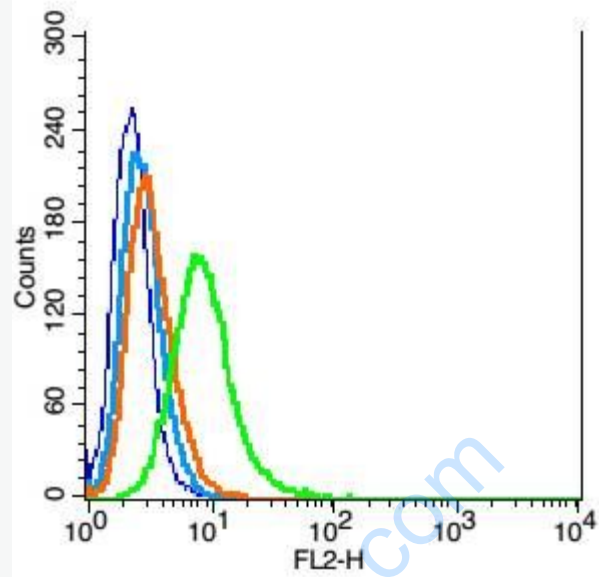
Secondary: IRDye800CW Goat Anti-Rabbit IgG at 1/20000 dilution

Predicted band size: 29 kD

Observed band size: 28 kD



Paraformaldehyde-fixed, paraffin embedded (rat brain); Antigen retrieval by boiling in sodium citrate buffer (pH6.0) for 15min; Block endogenous peroxidase by 3% hydrogen peroxide for 20 minutes; Blocking buffer (normal goat serum) at 37°C for 30min; Antibody incubation with (SYNPR) Polyclonal Antibody, Unconjugated (SL11367R) at 1:800 overnight at 4°C, followed by a conjugated secondary (sp-0023) for 20 minutes and DAB staining.



Blank control(blue): RSC96(fixed with 2% paraformaldehyde (10 min)).

Primary Antibody:Rabbit Anti-SYNPR/Synaptoporin antibody(SL11367R),

Dilution: 5 $\mu$ g in 100  $\mu$ L 1X PBS containing 0.5% BSA;

Isotype Control Antibody: Rabbit IgG(orange) ,used under the same conditions );

Secondary Antibody: Goat anti-rabbit IgG-PE(white blue), Dilution: 1:200 in 1 X

PBS containing 0.5% BSA.