



## Rabbit Anti-Sec8 antibody

SL11368R

|                               |  |
|-------------------------------|--|
| <b>Product Name:</b>          | Sec8   |
| <b>Chinese Name:</b>          | 胞吐分泌蛋白Sec8抗体   |
| <b>Alias:</b>                 | dSec8; EXOC 4; Exoc4; EXOC4_HUMAN; Exocyst complex component 4; Exocyst complex component Sec8; KIAA1699; MGC27170; REC 8; REC8; rSec 8; Sec 8; Sec 8p; Sec8; SEC8 like 1; SEC8 protein; Sec8L1; Sec8p.  |
| <b>Organism Species:</b>      | Rabbit   |
| <b>Clonality:</b>             | Polyclonal   |
| <b>React Species:</b>         | Human,Mouse,Rat,Cow,Horse,Rabbit,  |
| <b>Applications:</b>          | WB=1:500-2000ELISA=1:500-1000IHC-P=1:400-800IHC-F=1:400-800ICC=1:100-500IF=1:100-500 (Paraffin sections need antigen repair)<br>not yet tested in other applications.<br>optimal dilutions/concentrations should be determined by the end user.  |
| <b>Molecular weight:</b>      | 110kDa   |
| <b>Cellular localization:</b> | The nucleuscytoplasmicThe cell membrane  |
| <b>Form:</b>                  | Lyophilized or Liquid  |
| <b>Concentration:</b>         | 1mg/ml   |
| <b>immunogen:</b>             | KLH conjugated synthetic peptide derived from human Sec8:10-110/974  |
| <b>Lsotype:</b>               | IgG  |
| <b>Purification:</b>          | affinity purified by Protein A   |
| <b>Storage Buffer:</b>        | 0.01M TBS(pH7.4) with 1% BSA, 0.03% Proclin300 and 50% Glycerol.   |
| <b>Storage:</b>               | Store at -20 °C for one year. Avoid repeated freeze/thaw cycles. The lyophilized antibody is stable at room temperature for at least one month and for greater than a year when kept at -20°C. When reconstituted in sterile pH 7.4 0.01M PBS or diluent of antibody the antibody is stable for at least two weeks at 2-4 °C.  |
| <b>PubMed:</b>                | <a href="#">PubMed</a>   |
| <b>Product Detail:</b>        | The protein encoded by this gene is a component of the exocyst complex, a multiple protein complex essential for targeting exocytic vesicles to specific docking sites on the plasma membrane. Though best characterized in yeast, the component proteins and functions of exocyst complex have been demonstrated to be highly conserved in higher eukaryotes. At least eight components of the exocyst complex, including this protein, |

are found to interact with the actin cytoskeletal remodeling and vesicle transport machinery. The complex is also essential for the biogenesis of epithelial cell surface polarity. Alternate transcriptional splice variants, encoding different isoforms, have been characterized. [provided by RefSeq, Jul 2008]

**Function:**

Component of the exocyst complex involved in the docking of exocytic vesicles with fusion sites on the plasma membrane.

**Subunit:**

The exocyst complex is composed of EXOC1, EXOC2, EXOC3, EXOC4, EXOC5, EXOC6, EXOC7 and EXOC8. Interacts with BIRC6/bruce. Interacts with MYRIP.

**Similarity:**

Belongs to the SEC8 family.

**SWISS:**

Q96A65

**Gene ID:**

60412

**Database links:**

[Entrez Gene: 60412](#)Human

[Entrez Gene: 20336](#)Mouse

[Entrez Gene: 116654](#)Rat

[Omim: 608185](#)Human

[SwissProt: Q96A65](#)Human

[SwissProt: O35382](#)Mouse

[SwissProt: Q62824](#)Rat

[Unigene: 321273](#)Human

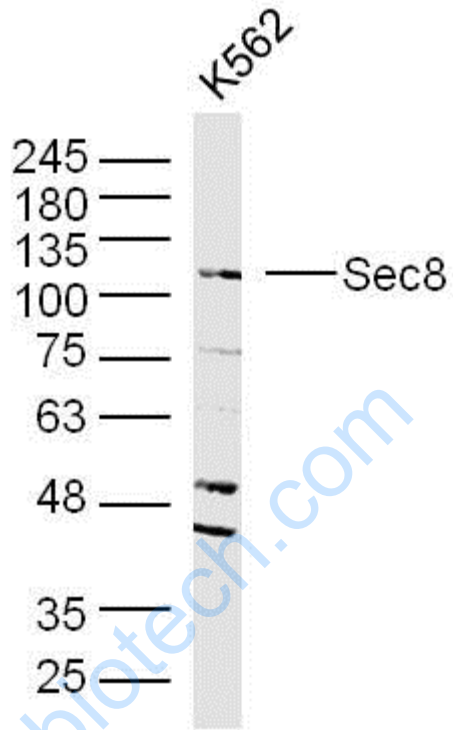
[Unigene: 265512](#)Mouse

[Unigene: 51841](#)Rat

**Important Note:**

This product as supplied is intended for research use only, not for use in human, therapeutic or diagnostic applications.

Picture:



Sample: K562 Cell (Human) Lysate at 40 ug

Primary: Anti-Sec8 (SL11368R) at 1/300 dilution

Secondary: IRDye800CW Goat Anti-Rabbit IgG at 1/20000 dilution

Predicted band size: 110 kD

Observed band size: 110 kD