



## Rabbit Anti-Synaptogyrin 3 antibody

SL11373R

<b>Product Name:</b>	Synaptogyrin 3
<b>Chinese Name:</b>	神经细胞囊泡循环蛋白3抗体
<b>Alias:</b>	SNG3_HUMAN; Synaptogyrin 3; Synaptogyrin-3; Synaptogyrin3; SYNGR 3; SYNGR3; SYNGR-3; MGC:20003; MGC20003; OTTHUMP00000158899.
<b>Organism Species:</b>	Rabbit
<b>Clonality:</b>	Polyclonal
<b>React Species:</b>	Human,Mouse,Rat,Dog,Pig,Cow,Horse,Sheep,
<b>Applications:</b>	WB=1:500-2000ELISA=1:500-1000IHC-P=1:400-800IHC-F=1:400-800ICC=1:100-500IF=1:100-500 (Paraffin sections need antigen repair) not yet tested in other applications. optimal dilutions/concentrations should be determined by the end user.
<b>Molecular weight:</b>	25kDa
<b>Cellular localization:</b>	cytoplasmicThe cell membrane
<b>Form:</b>	Lyophilized or Liquid
<b>Concentration:</b>	1mg/ml
<b>immunogen:</b>	KLH conjugated synthetic peptide derived from human Synaptogyrin 3:101-200/229
<b>Lsotype:</b>	IgG
<b>Purification:</b>	affinity purified by Protein A
<b>Storage Buffer:</b>	0.01M TBS(pH7.4) with 1% BSA, 0.03% Proclin300 and 50% Glycerol.
<b>Storage:</b>	Store at -20 °C for one year. Avoid repeated freeze/thaw cycles. The lyophilized antibody is stable at room temperature for at least one month and for greater than a year when kept at -20°C. When reconstituted in sterile pH 7.4 0.01M PBS or diluent of antibody the antibody is stable for at least two weeks at 2-4 °C.
<b>PubMed:</b>	<a href="#">PubMed</a>
<b>Product Detail:</b>	The synaptogyrin family of proteins are integral membrane proteins containing four transmembrane regions. Synaptogyrins are tyrosine-phosphorylated proteins with two neuronal (Synaptogyrins 1 and 3) and one ubiquitous (Synaptogyrin-2) isoform. Synaptophysin and synaptogyrin represent the major constituents of synaptic vesicles. Synaptogyrin-1 is associated with presynaptic vesicles in neuronal cells. Synaptogyrin-2, also known as Cellugyrin has a tyrosine phosphorylated C-terminal cytoplasmic tail,

and is involved in the regulation of membrane traffic in non-neuronal cells. Synaptogyrin-3 is expressed mainly in brain and placenta. The SYNGR4 gene encodes for the 234 amino acid protein Synaptogyrin-4.

**Function:**

Involved in the positive regulation of dopamine transporter activity. Probably facilitates the physical and functional interactions of the transporter with the dopamine vesicular storage system, allowing a more efficient loading of the vesicles with extracellular dopamine after release.

**Subunit:**

Interacts (via N-terminus) with SLC6A3 (via N-terminus) (By similarity).

**Subcellular Location:**

Membrane; Multi-pass membrane protein. Cytoplasmic vesicle, secretory vesicle, synaptic vesicle (By similarity). Cell junction, synapse. Note=Found at the neuromuscular synapses (By similarity).

**Tissue Specificity:**

Expressed in brain and placenta.

**Similarity:**

Belongs to the synaptogyrin family.  
Contains 1 MARVEL domain.

**SWISS:**

O43761

**Gene ID:**

9143

**Database links:**

[Entrez Gene: 9143](#)Human

[Entrez Gene: 20974](#)Mouse

[Entrez Gene: 302975](#)Rat

[Omim: 603927](#)Human

[SwissProt: O43761](#)Human

[SwissProt: Q8R191](#)Mouse

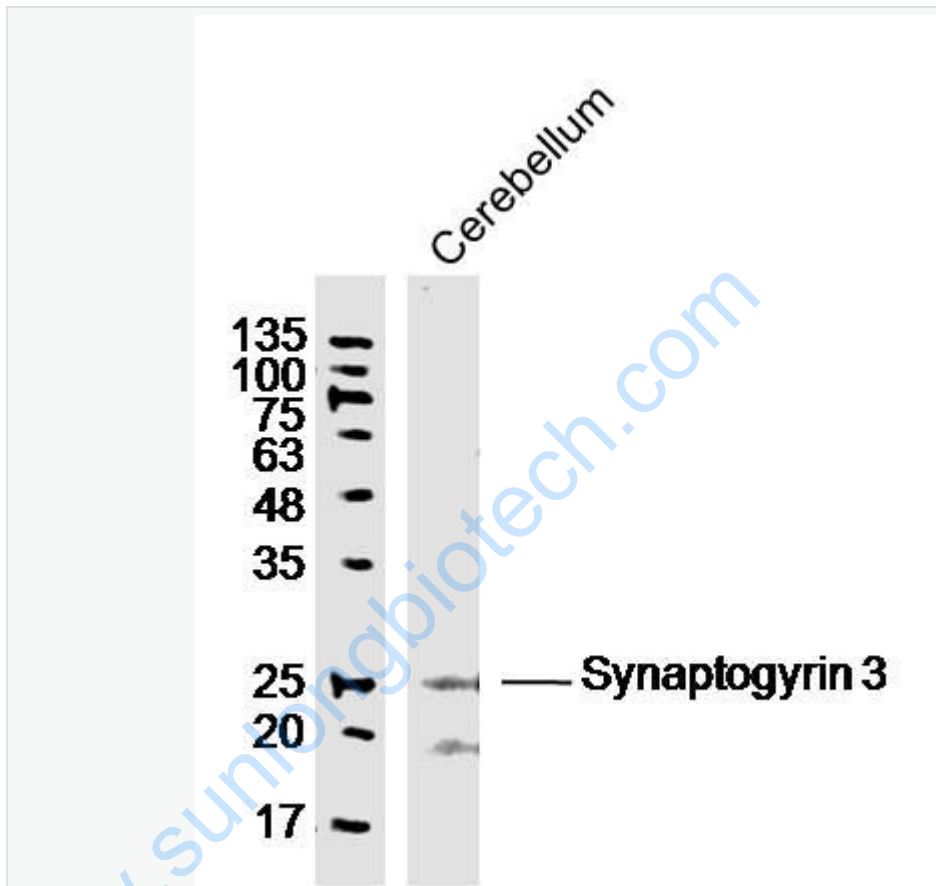
[Unigene: 435277](#)Human

[Unigene: 26032](#)Mouse

**Important Note:**

This product as supplied is intended for research use only, not for use in human, therapeutic or diagnostic applications.

Picture:



Sample: Cerebellum (Mouse) Lysate at 40 ug

Primary: Anti-Synaptogyrin 3 (SL11373R) at 1/300 dilution

Secondary: IRDye800CW Goat Anti-Rabbit IgG at 1/20000 dilution

Predicted band size: 25 kD

Observed band size: 25 kD