



Rabbit Anti-Somatostatin Receptor 1 antibody

SL1137R

Product Name:	Somatostatin Receptor 1
Chinese Name:	生长抑素受体1抗体
Alias:	somatostatin receptor 1; Somatostatin R1; Somatostatin receptor isoform 1; Somatostatin receptor type 1; SRIF 2; SRIF2; SSTR 1; SSTR1; Sstr1; SRIF-2; Smstr-1; Smstr1; sst1; SSR1 HUMAN.
Organism Species:	Rabbit
Clonality:	Polyclonal
React Species:	Human,Mouse,Rat,Dog,Pig,Cow,Horse,Guinea Pig,
Applications:	WB=1:500-2000ELISA=1:500-1000 not yet tested in other applications. optimal dilutions/concentrations should be determined by the end user.
Molecular weight:	43kDa
Cellular localization:	The cell membrane
Form:	Lyophilized or Liquid
Concentration:	1mg/ml
immunogen:	KLH conjugated synthetic peptide derived from human SSTR1:201-300/391<Cytoplasmic>
Lsotype:	IgG
Purification:	affinity purified by Protein A
Storage Buffer:	0.01M TBS(pH7.4) with 1% BSA, 0.03% Proclin300 and 50% Glycerol.
Storage:	Store at -20 °C for one year. Avoid repeated freeze/thaw cycles. The lyophilized antibody is stable at room temperature for at least one month and for greater than a year when kept at -20°C. When reconstituted in sterile pH 7.4 0.01M PBS or diluent of antibody the antibody is stable for at least two weeks at 2-4 °C.
PubMed:	PubMed
Product Detail:	Somatostatins are peptide hormones that regulate diverse cellular functions such as neurotransmission, cell proliferation, and endocrine signaling as well as inhibiting the release of many hormones and other secretory proteins. Somatostatin has two active forms of 14 and 28 amino acids. The biological effects of somatostatins are mediated by a family of G-protein coupled somatostatin receptors that are expressed in a tissue-

specific manner. The protein encoded by this gene is a member of the superfamily of somatostatin receptors having seven transmembrane segments. Somatostatin receptors form homodimers and heterodimers with other members of the superfamily as well as with other G-protein coupled receptors and receptor tyrosine kinases. This somatostatin receptor has greater affinity for somatostatin-14 than -28. [provided by RefSeq, Jul 2012]

Subunit:

Interacts with SKB1.

Subcellular Location:

Cell membrane; Multi-pass membrane protein.

Tissue Specificity:

Fetal kidney, fetal liver, and adult pancreas, brain, lung, jejunum and stomach.

Similarity:

Belongs to the G-protein coupled receptor 1 family.

SWISS:

P30872

Gene ID:

6751

Database links:

[Entrez Gene: 6751](#) Human

[Entrez Gene: 20605](#) Mouse

[Entrez Gene: 25033](#) Rat

[Omim: 182451](#) Human

[SwissProt: P30872](#) Human

[SwissProt: P30873](#) Mouse

[SwissProt: P28646](#) Rat

[Unigene: 248160](#) Human

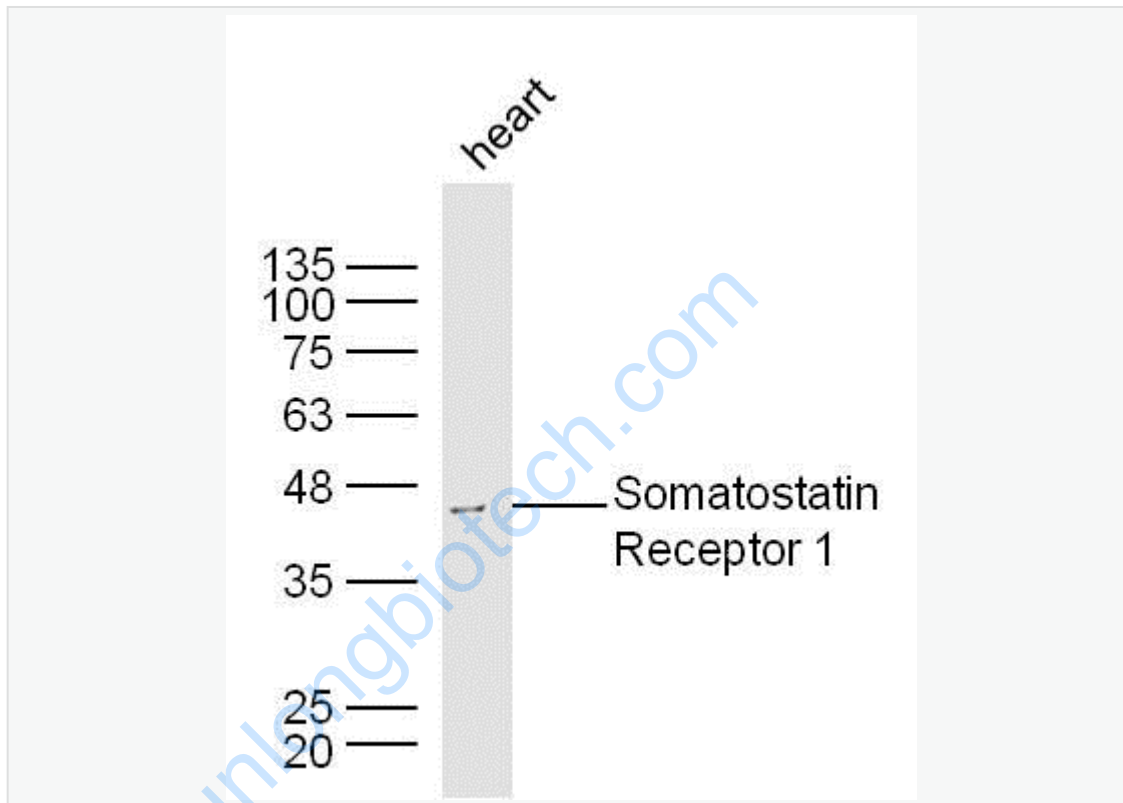
[Unigene: 278336](#) Mouse

[Unigene: 42915](#) Rat

Important Note:

This product as supplied is intended for research use only, not for use in human, therapeutic or diagnostic applications.

Picture:



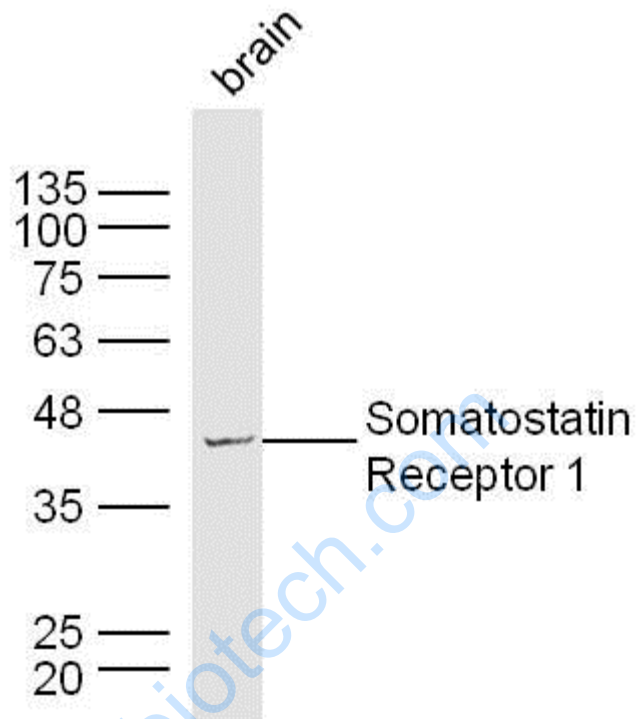
Sample: Brain(Mouse) Lysate at 30 ug

Primary: Anti-Somatostatin Receptor 1(SL1137R) at 1/300 dilution

Secondary: IRDye800CW Goat Anti-Mouse IgG at 1/20000 dilution

Predicted band size: 43 kD

Observed band size: 43 kD



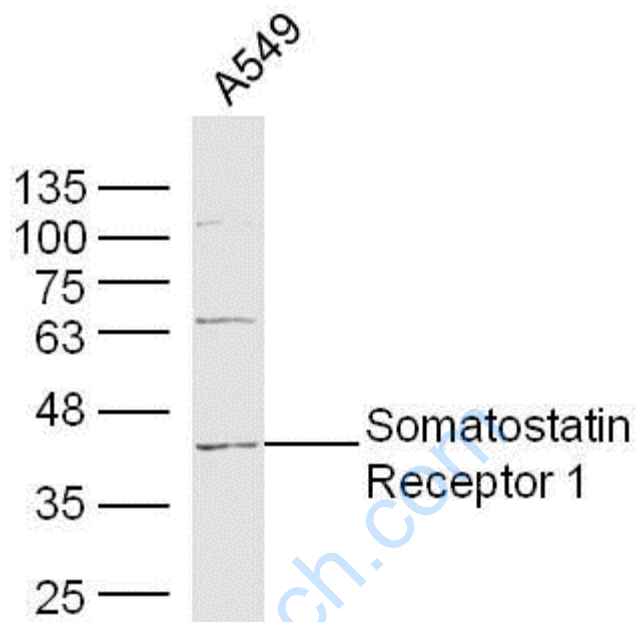
Sample: Brain(Mouse) Lysate at 30 ug

Primary: Anti- Somatostatin Receptor 1(SL1137R) at 1/300 dilution

Secondary: IRDye800CW Goat Anti-Mouse IgG at 1/20000 dilution

Predicted band size: 43 kD

Observed band size: 43 kD



Sample: A549 Cell Lysate at 30 ug

Primary: Anti-Somatostatin Receptor 1(SL1137R) at 1/300 dilution

Secondary: IRDye800CW Goat Anti-Mouse IgG at 1/20000 dilution

Predicted band size: 43 kD

Observed band size: 43 kD