



Rabbit Anti-AAMP antibody

SL11388R

Product Name:	AAMP
Chinese Name:	vascular endothelial cell迁移蛋白抗体
Alias:	angio-associated migratory cell protein; AAMP HUMAN.
Organism Species:	Rabbit
Clonality:	Polyclonal
React Species:	Human,Mouse,Rat,Dog,Pig,Cow,Rabbit,
Applications:	WB=1:500-2000ELISA=1:500-1000IHC-P=1:400-800IHC-F=1:400-800Flow-Cyt=1µg/TestICC=1:100-500IF=1:100-500 (Paraffin sections need antigen repair) not yet tested in other applications. optimal dilutions/concentrations should be determined by the end user.
Molecular weight:	47kDa
Cellular localization:	cytoplasmicThe cell membrane
Form:	Lyophilized or Liquid
Concentration:	1mg/ml
immunogen:	KLH conjugated synthetic peptide derived from human AAMP:76-125/434
Lsotype:	IgG
Purification:	affinity purified by Protein A
Storage Buffer:	0.01M TBS(pH7.4) with 1% BSA, 0.03% Proclin300 and 50% Glycerol.
Storage:	Store at -20 °C for one year. Avoid repeated freeze/thaw cycles. The lyophilized antibody is stable at room temperature for at least one month and for greater than a year when kept at -20°C. When reconstituted in sterile pH 7.4 0.01M PBS or diluent of antibody the antibody is stable for at least two weeks at 2-4 °C.
PubMed:	PubMed
Product Detail:	AAMP is a 434 amino acid immunoglobulin-like protein that contains 8 WD repeats. Expressed in endothelial cells, cytotrophoblasts and blood vessels, AAMP is thought to have a heparin-sensitive role in cell adhesion and cell migration. AAMP is strongly expressed in poorly differentiated colon adenocarcinoma cells, suggesting a role for AAMP in tumor progression. Function:

The gene product of AAMP is an immunoglobulin-type protein, which is found to be expressed strongly in endothelial cells, cytotrophoblasts, and poorly differentiated colon adenocarcinoma cells found in lymphatics. The protein contains a heparin-binding domain and mediates heparin-sensitive cell adhesion.

Subcellular Location:

Cell Membrane and Cytoplasmic

Tissue Specificity:

Expressed in metastatic melanoma, liver, skin, kidney, heart, lung, lymph node, skeletal muscle and brain, and also in A2058 melanoma cells and activated T-cells (at protein level). Expressed in blood vessels. Strongly expressed in endothelial cells, cytotrophoblasts, and poorly differentiated. colon adenocarcinoma cells found in lymphatics.

Similarity:

Contains 8 WD repeats.

SWISS:

Q13685

Gene ID:

14

Database links:

[Entrez Gene: 14](#) Human

[Entrez Gene: 227290](#) Mouse

[Entrez Gene: 301512](#) Rat

[Omim: 603488](#) Human

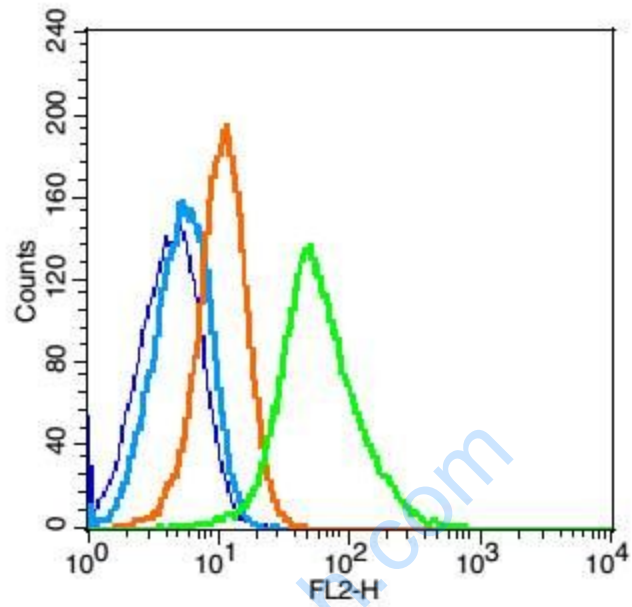
[SwissProt: Q3SZK1](#) Cow

[SwissProt: Q13685](#) Human

Important Note:

This product as supplied is intended for research use only, not for use in human, therapeutic or diagnostic applications.

Picture:



Blank control(blue): Raji(fixed with 2% paraformaldehyde (10 min)).

Primary Antibody:Rabbit Anti-AAMP antibody(SL11388R), Dilution: 1 μ g in 100 μ L 1X PBS containing 0.5% BSA;

Isotype Control Antibody: Rabbit IgG(orange) ,used under the same conditions);

Secondary Antibody: Goat anti-rabbit IgG-PE(white blue), Dilution: 1:200 in 1 X PBS containing 0.5% BSA.