



Rabbit Anti-GCX1/C20orf100 antibody

SL11402R

Product Name:	GCX1/C20orf100
Chinese Name:	20号染色体开放阅读框100抗体
Alias:	Chromosome 20 open reading frame 100; Chromosome 20 open reading frame 100; dJ1108D11.2; dJ495O3.1; GCX 1; GCX1; GCX-1; Granulosa cell HMG box protein 1; MGC15880; Weakly similar to NONHISTONE CHROMOSOMAL PROTEIN 6A [S.cerevisiae]; Weakly similar to NONHISTONE CHROMOSOMAL PROTEIN 6A [S.cerevisiae]; TOX2_HUMAN.
Organism Species:	Rabbit
Clonality:	Polyclonal
React Species:	Human,Mouse,Rat,Dog,Pig,Cow,Horse,Rabbit,Sheep,
Applications:	ELISA=1:500-1000IHC-P=1:400-800IHC-F=1:400-800ICC=1:100-500IF=1:100-500 (Paraffin sections need antigen repair) not yet tested in other applications. optimal dilutions/concentrations should be determined by the end user.
Molecular weight:	52kDa
Cellular localization:	The nucleus
Form:	Lyophilized or Liquid
Concentration:	1mg/ml
immunogen:	KLH conjugated synthetic peptide derived from human GCX1/C20orf100:201-300/488
Lsotype:	IgG
Purification:	affinity purified by Protein A
Storage Buffer:	0.01M TBS(pH7.4) with 1% BSA, 0.03% Proclin300 and 50% Glycerol.
Storage:	Store at -20 °C for one year. Avoid repeated freeze/thaw cycles. The lyophilized antibody is stable at room temperature for at least one month and for greater than a year when kept at -20°C. When reconstituted in sterile pH 7.4 0.01M PBS or diluent of antibody the antibody is stable for at least two weeks at 2-4 °C.
PubMed:	PubMed
Product Detail:	GCX-1 is a 488 amino acid transcription activator that is restricted to expression in the hypothalamus, pituitary, ovary, testis and uterus. Human reproduction is controlled by the hypothalamic-pituitary gonadal axis (HPGA) that is laid down early in fetal

development. This expression pattern in the HPGA suggests that this nuclear protein is likely related to specific events in reproduction, particularly in the female. GCX-1 contains a HMG-box domain, which is commonly found in proteins that function as intercellular regulators and transcriptional co-regulators, and are found to be involved in important events such as sex determination and in the regulation of T cell differentiation. There are two isoforms of GCX-1 which are produced as a result of alternative splicing events.

Function:

C20orf100 is a putative transcriptional activator involved in the hypothalamo-pituitary-gonadal system. It may regulate follicular development and other processes related to female reproduction.

Subcellular Location:

Nuclear

Similarity:

Contains 1 HMG box DNA-binding domain.

SWISS:

Q96NM4

Gene ID:

84969

Database links:

[Entrez Gene: 84969](#)Human

[Entrez Gene: 269389](#)Mouse

[Entrez Gene: 311615](#)Rat

[Oimim: 611163](#)Human

[SwissProt: Q96NM4](#)Human

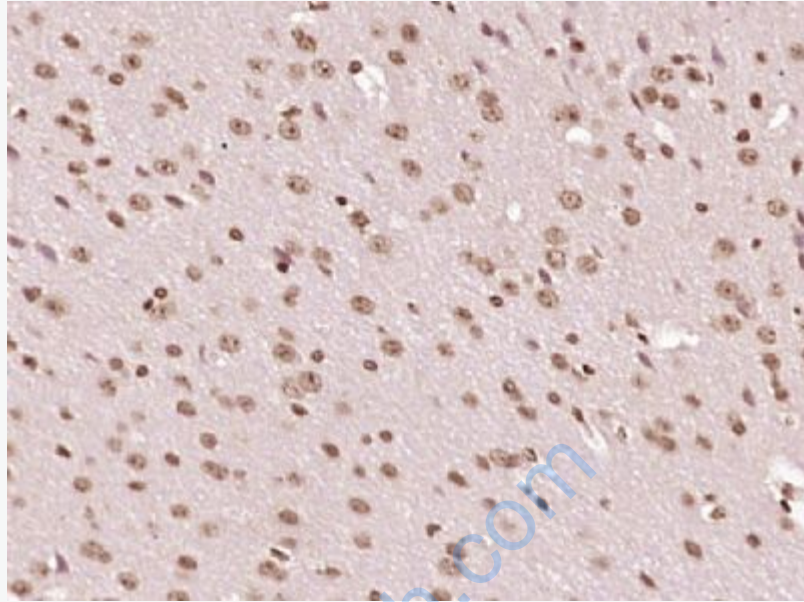
[SwissProt: Q76IQ7](#)Rat

[Unigene: 26608](#)Human

[Unigene: 129021](#)Rat

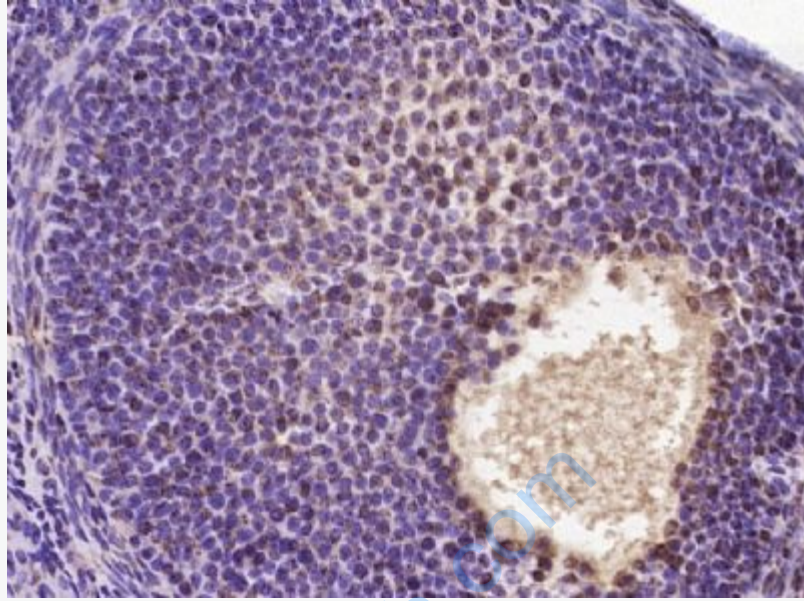
Important Note:

This product as supplied is intended for research use only, not for use in human, therapeutic or diagnostic applications.



Picture:

Paraformaldehyde-fixed, paraffin embedded (Mouse brain); Antigen retrieval by boiling in sodium citrate buffer (pH6.0) for 15min; Block endogenous peroxidase by 3% hydrogen peroxide for 20 minutes; Blocking buffer (normal goat serum) at 37°C for 30min; Antibody incubation with (GCX1 C20orf100) Polyclonal Antibody, Unconjugated (SL11402R) at 1:400 overnight at 4°C, followed by operating according to SP Kit(Rabbit) (sp-0023) instructions and DAB staining.



Paraformaldehyde-fixed, paraffin embedded (Mouse ovary); Antigen retrieval by boiling in sodium citrate buffer (pH6.0) for 15min; Block endogenous peroxidase by 3% hydrogen peroxide for 20 minutes; Blocking buffer (normal goat serum) at 37°C for 30min; Antibody incubation with (GCX1 C20orf100) Polyclonal Antibody, Unconjugated (SL11402R) at 1:400 overnight at 4°C, followed by operating according to SP Kit(Rabbit) (sp-0023) instructions and DAB staining.