



Rabbit Anti-CWC22 antibody

SL11464R

Product Name:	CWC22
Chinese Name:	CWC22蛋白抗体
Alias:	CWC22; CWC22 spliceosome associated protein homolog (S. cerevisiae); CWC22 spliceosome associated protein homolog; CWC22_HUMAN; EIF4GL; fSAPb; Functional spliceosome associated protein b; KIAA1604; NCM; Nucampholin homolog; Pre-mRNA-splicing factor CWC22 homolog.
Organism Species:	Rabbit
Clonality:	Polyclonal
React Species:	Human,Mouse,Rat,Chicken,Dog,Pig,Cow,Horse,Rabbit,Sheep,
Applications:	ELISA=1:500-1000IHC-P=1:400-800IHC-F=1:400-800ICC=1:100-500IF=1:100-500 (Paraffin sections need antigen repair) not yet tested in other applications. optimal dilutions/concentrations should be determined by the end user.
Molecular weight:	105kDa
Cellular localization:	The nucleus
Form:	Lyophilized or Liquid
Concentration:	1mg/ml
immunogen:	KLH conjugated synthetic peptide derived from human CWC22:101-200/908
Lsotype:	IgG
Purification:	affinity purified by Protein A
Storage Buffer:	0.01M TBS(pH7.4) with 1% BSA, 0.03% Proclin300 and 50% Glycerol.
Storage:	Store at -20 °C for one year. Avoid repeated freeze/thaw cycles. The lyophilized antibody is stable at room temperature for at least one month and for greater than a year when kept at -20°C. When reconstituted in sterile pH 7.4 0.01M PBS or diluent of antibody the antibody is stable for at least two weeks at 2-4 °C.
PubMed:	PubMed
Product Detail:	Spliceosomes are multi-protein complexes that are composed of snRNPs (small nuclear ribonucleoproteins) and a variety of associated protein factors, all of which work in concert to regulate the splicing of pre-mRNA, a critical step in the post-transcriptional regulation of gene expression. CWC22 (CWC22 spliceosome-associated protein), also

known as NCM, fSAPb or EIF4GL, is a 908 amino acid nuclear protein and component of the spliceosome C complex. CWC22 is associated with the spliceosome prior to catalytic steps and remains associated throughout the reaction. Belonging to the CWC22 family, CW22 contains one MI domain and a MIF4G domain. The gene encoding CWC22 maps to human chromosome 2q31.3. As the second largest human chromosome, chromosome 2 makes up approximately 8% of the human genome and contains 237 million bases encoding over 1,400 genes.

Function:

May be involved in pre-mRNA splicing.

Subunit:

Component of the spliceosome C complex.

Subcellular Location:

Nucleus.

Similarity:

Belongs to the CWC22 family.

Contains 1 MI domain.

Contains 1 MIF4G domain.

SWISS:

Q9HCG8

Gene ID:

57703

Database links:

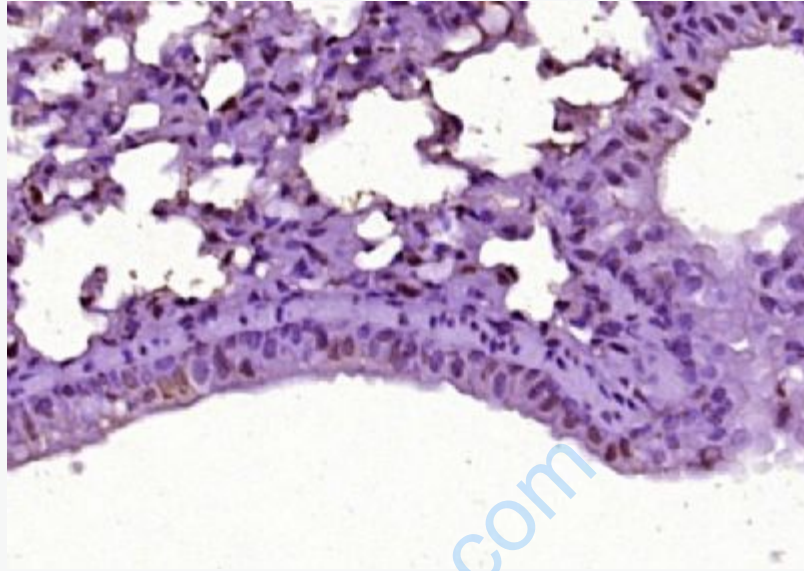
[Entrez Gene: 57703](#)Human

[SwissProt: Q9HCG8](#)Human

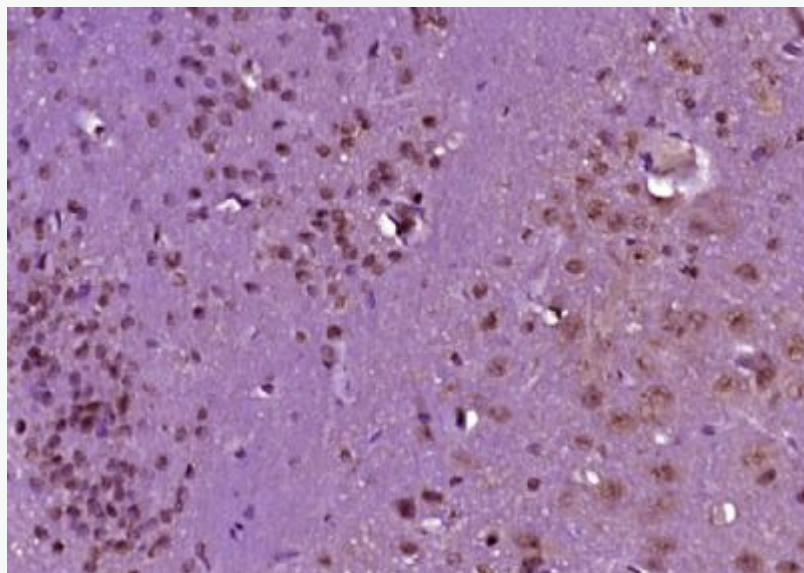
[Unigene: 311363](#)Human

Important Note:

This product as supplied is intended for research use only, not for use in human, therapeutic or diagnostic applications.



Paraformaldehyde-fixed, paraffin embedded (mouse lung tissue); Antigen retrieval by boiling in sodium citrate buffer (pH6.0) for 15min; Block endogenous peroxidase by 3% hydrogen peroxide for 20 minutes; Blocking buffer (normal goat serum) at 37°C for 30min; Antibody incubation with (CWC22) Polyclonal Antibody, Unconjugated (SL11464R) at 1:400 overnight at 4°C, followed by operating according to SP Kit(Rabbit) (sp-0023) instructions and DAB staining.



Picture:

Paraformaldehyde-fixed, paraffin embedded (rat brain tissue); Antigen retrieval by boiling in sodium citrate buffer (pH6.0) for 15min; Block endogenous peroxidase by 3% hydrogen peroxide for 20 minutes; Blocking buffer (normal goat serum) at 37°C for 30min; Antibody incubation with (CWC22) Polyclonal Antibody, Unconjugated (SL11464R) at 1:400 overnight at 4°C, followed by operating according to SP Kit(Rabbit) (sp-0023) instructions and DAB staining.

www.sunlongbiotech.com