



Rabbit Anti-PLXNB3 antibody

SL11470R

Product Name:	PLXNB3
Chinese Name:	神经丛蛋白B3抗体
Alias:	Plexin B3; KIAA1206; PLEXB3; Plexin-B3; PLEXR; PLXB3_HUMAN; PLXN6; PLXNB3.
Organism Species:	Rabbit
Clonality:	Polyclonal
React Species:	Human,Mouse,Rat,Dog,Pig,Horse,
Applications:	ELISA=1:500-1000IHC-P=1:400-800IHC-F=1:400-800ICC=1:100-500IF=1:100-500 (Paraffin sections need antigen repair) not yet tested in other applications. optimal dilutions/concentrations should be determined by the end user.
Molecular weight:	202kDa
Cellular localization:	cytoplasmicThe cell membrane
Form:	Lyophilized or Liquid
Concentration:	1mg/ml
immunogen:	KLH conjugated synthetic peptide derived from human Plexin B2:354-400/1909<Extracellular>
Lsotype:	IgG
Purification:	affinity purified by Protein A
Storage Buffer:	0.01M TBS(pH7.4) with 1% BSA, 0.03% Proclin300 and 50% Glycerol.
Storage:	Store at -20 °C for one year. Avoid repeated freeze/thaw cycles. The lyophilized antibody is stable at room temperature for at least one month and for greater than a year when kept at -20°C. When reconstituted in sterile pH 7.4 0.01M PBS or diluent of antibody the antibody is stable for at least two weeks at 2-4 °C.
PubMed:	PubMed
Product Detail:	Plexins are a family of large, transmembrane receptors for multiple classes of semaphorins in vertebrates. They are widely expressed, and regions of their extracellular domain are homologous to both scatter factor receptors and semaphorin domains. Plexins may act as semaphorin receptors alone or in combination with neuropilins. Plexins are divided into four subfamilies designated plexin-A, -B, -C, and -D. Plexin-B1 and -B2 are

both receptors for Sema4D, which stimulates axonal outgrowth of embryonic dorsal root ganglion neurons. . Plexin-B3 binds to Sema5A, which controls axon guidance and can initiate the intracellular signaling of the hepatocyte growth factor/scatter factor receptor Met.

Function:

Receptor for SEMA5A. Plays a role in axon guidance, invasive growth and cell migration.

Subunit:

Interacts (via cytoplasmic domain) with RAC1 and ARHGDI1 (By similarity). Binds MET and MST1R. Interacts (via cytoplasmic domain) with FSCN1. Interacts with RIT2/RIN. May form homodimers (via Sema domain).

Subcellular Location:

Cell membrane; Single-pass type I membrane protein. Note=Colocalizes with RIT2/RIN at the plasma membrane.

Tissue Specificity:

Detected at very low levels in several fetal tissues.

Similarity:

Belongs to the plexin family.
Contains 4 IPT/TIG domains.
Contains 1 Sema domain.

SWISS:

Q9ULL4

Gene ID:

5365

Database links:

[Entrez Gene: 5365](#) Human

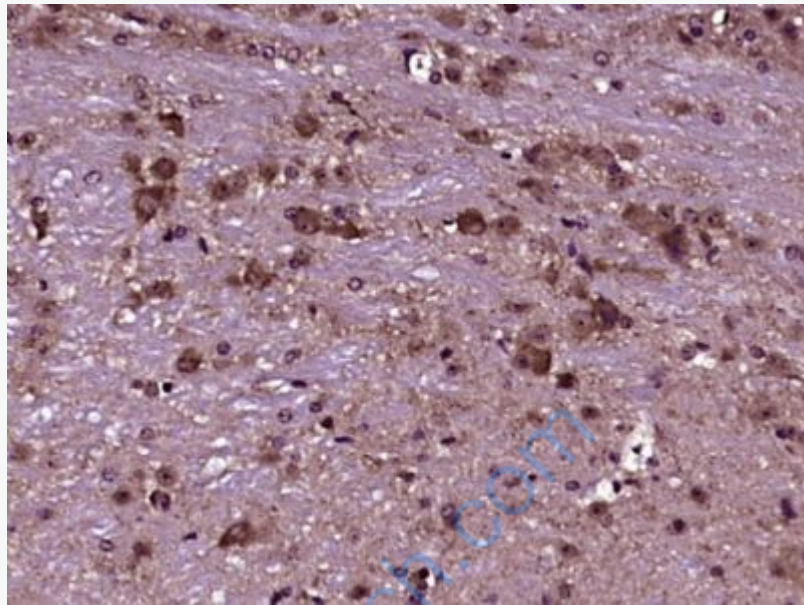
[Omim: 300214](#) Human

[SwissProt: Q9ULL4](#) Human

[Unigene: 632833](#) Human

Important Note:

This product as supplied is intended for research use only, not for use in human, therapeutic or diagnostic applications.



Picture:

Paraformaldehyde-fixed, paraffin embedded (Mouse cerebellum); Antigen retrieval by boiling in sodium citrate buffer (pH6.0) for 15min; Block endogenous peroxidase by 3% hydrogen peroxide for 20 minutes; Blocking buffer (normal goat serum) at 37°C for 30min; Antibody incubation with (PLXNB3) Polyclonal Antibody, Unconjugated (SL11470R) at 1:400 overnight at 4°C, followed by operating according to SP Kit(Rabbit) (sp-0023) instructions and DAB staining.