



Rabbit Anti-TSLC1 antibody

SL1147R

| | |
|--------------------------|---|
| Product Name: | TSLC1 |
| Chinese Name: | Cell adhesion molecule1抗体 |
| Alias: | CADM1; BL2; Cadm1; CADM1_HUMAN; Cell adhesion molecule 1; DKFZp686F1789; IGSF4; IGSF4A; Immunoglobulin Superfamily Member 4; MGC149785; MGC51880; NECL-2; NECL2; Nectin like 2; Nectin-like protein 2; RA175; SgIGSF; Spermatogenic immunoglobulin superfamily; ST17; sTSLC 1; Synaptic cell Adhesion Molecule; SynCAM; SynCAM1; TSLC-1; TSLC1; Tumor Suppressor in Lung Cancer 1. |
| 文献引用 PubMed : | <p>Specific References(2) SL1147R has been referenced in 2 publications.</p> <p>[IF=3.98]Liu, Wen-bin, et al. "Aberrant methylation accounts for cell adhesion-related gene silencing during 3-methylcholanthrene and diethylnitrosamine induced multistep rat lung carcinogenesis associated with overexpression of DNA methyltransferases 1 and 3a." Toxicology and applied pharmacology 251.1 (2011): 70-78.IHC-P;Rat. PubMed:21163286</p> <p>[IF=4.20]Yuan, Qing, et al. "Docetaxel-loaded solid lipid nanoparticles suppress breast cancer cells growth with reduced myelosuppression toxicity." International Journal of Nanomedicine 9 (2014): 4829.WB;Mouse. PubMed:25378924</p> |
| Organism Species: | Rabbit |
| Clonality: | Polyclonal |
| React Species: | Human,Mouse,Rat,Chicken,Dog, |
| Applications: | WB=1:500-2000ELISA=1:500-1000IHC-P=1:400-800IHC-F=1:400-800IF=1:100-500 (Paraffin sections need antigen repair) not yet tested in other applications. optimal dilutions/concentrations should be determined by the end user. |

| | |
|-------------------------------|--|
| Molecular weight: | 44kDa |
| Cellular localization: | cytoplasmicThe cell membrane |
| Form: | Lyophilized or Liquid |
| Concentration: | 1mg/ml |
| immunogen: | KLH conjugated synthetic peptide derived from human TSLC1:365-442/442<Cytoplasmic> |
| Lsotype: | IgG |
| Purification: | affinity purified by Protein A |
| Storage Buffer: | 0.01M TBS(pH7.4) with 1% BSA, 0.03% Proclin300 and 50% Glycerol. |
| Storage: | Store at -20 °C for one year. Avoid repeated freeze/thaw cycles. The lyophilized antibody is stable at room temperature for at least one month and for greater than a year when kept at -20°C. When reconstituted in sterile pH 7.4 0.01M PBS or diluent of antibody the antibody is stable for at least two weeks at 2-4 °C. |
| PubMed: | PubMed |
| Product Detail: | <p>Mediates homophilic cell-cell adhesion in a Ca(2+)-independent manner. Also mediates heterophilic cell-cell adhesion with CADM3 and PVRL3 in a Ca(2+)-independent manner. Acts as a tumor suppressor in non-small-cell lung cancer (NSCLC) cells. Interaction with CRTAM promotes natural killer (NK) cell cytotoxicity and interferon-gamma (IFN-gamma) secretion by CD8+ cells in vitro as well as NK cell-mediated rejection of tumors expressing CADM3 in vivo. May contribute to the less invasive phenotypes of lepidic growth tumor cells. In mast cells, may mediate attachment to and promote communication with nerves. CADM1, together with MITF, is essential for development and survival of mast cells in vivo. May act as a synaptic cell adhesion molecule that drives synapse assembly. May be involved in neuronal migration, axon growth, pathfinding, and fasciculation on the axons of differentiating neurons. May play diverse roles in the spermatogenesis including in the adhesion of spermatocytes and spermatids to Sertoli cells and for their normal differentiation into mature spermatozoa.</p> <p>Function: Mediates homophilic cell-cell adhesion in a Ca(2+)-independent manner. Also mediates heterophilic cell-cell adhesion with CADM3 and PVRL3 in a Ca(2+)-independent manner. Acts as a tumor suppressor in non-small-cell lung cancer (NSCLC) cells. Interaction with CRTAM promotes natural killer (NK) cell cytotoxicity and interferon-gamma (IFN-gamma) secretion by CD8+ cells in vitro as well as NK cell-mediated rejection of tumors expressing CADM3 in vivo. May contribute to the less invasive phenotypes of lepidic growth tumor cells. In mast cells, may mediate attachment to and promote communication with nerves. CADM1, together with MITF, is essential for development and survival of mast cells in vivo. May act as a synaptic cell adhesion molecule that drives synapse assembly. May be involved in neuronal migration, axon growth, pathfinding, and fasciculation on the axons of differentiating neurons. May play diverse roles in the spermatogenesis including in the adhesion of spermatocytes and spermatids to Sertoli cells and for their normal differentiation into mature spermatozoa.</p> <p>Subunit: Homodimer. Interacts with CRTAM and EPB41L3/DAL1. The interaction with EPB41L3/DAL1 may act to anchor CADM1 to the actin cytoskeleton. Interacts via its</p> |

C-terminus with the PDZ domain of MPP3 and the PDZ domain of MPP6.

Subcellular Location:

Cell membrane; Single-pass type I membrane protein. Note=Associates with perinuclear and plasma membranes in vivo. Localized to the basolateral plasma membrane of epithelial cells in gall bladder.

Similarity:

Belongs to the nectin family.

Contains 2 Ig-like C2-type (immunoglobulin-like) domains.

Contains 1 Ig-like V-type (immunoglobulin-like) domain.

SWISS:

Q9BY67

Gene ID:

23705

Database links:

[Entrez Gene: 23705](#)Human

[Entrez Gene: 54725](#)Mouse

[Entrez Gene: 363058](#)Rat

[Omin: 605686](#)Human

[SwissProt: Q9BY67](#)Human

[SwissProt: Q8R5M8](#)Mouse

[Unigene: 370510](#)Human

[Unigene: 234832](#)Mouse

Important Note:

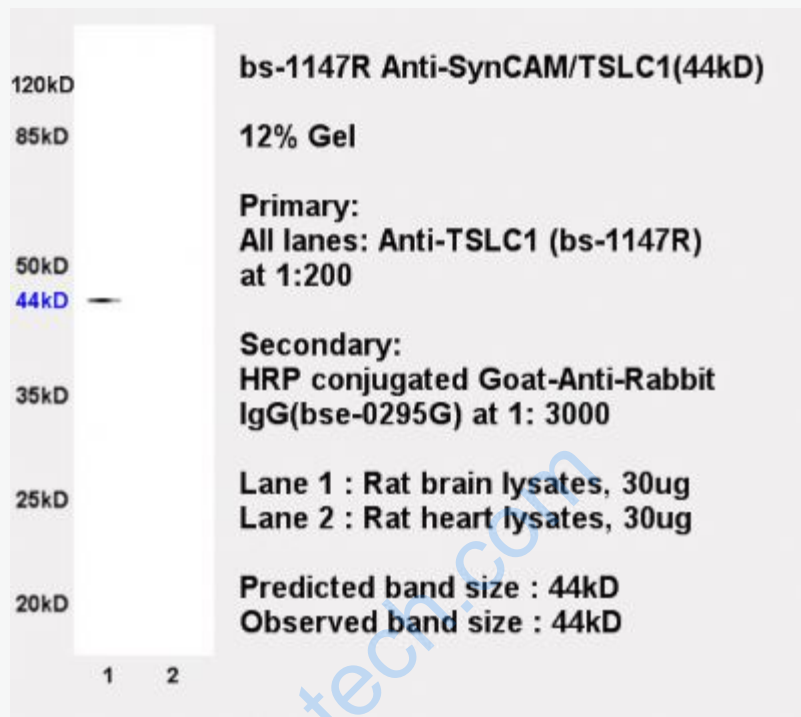
This product as supplied is intended for research use only, not for use in human, therapeutic or diagnostic applications.

TSLC1属于新的抑癌基因免疫球蛋白超家族,

TSLC1蛋白质参与细胞间黏附、细胞运动、Signal transduction及免疫调节.

TSLC1在多种Tumour中表达异常,它对Tumour的影响主要表现为抑制瘤细胞增殖及诱导凋亡、改变瘤细胞的生长特性及基因表达,可抑制上皮间质转化.

TSLC1蛋白在控制Tumour生物侵袭性方面有着重要作用,也可能作为预测患者预后的重要生物标记,但是TSLC1的Tumour抑制分子机制还有待进一步研究。



Picture:

Sample:

Lane1:Brain(Rat) Lysate at 30 ug

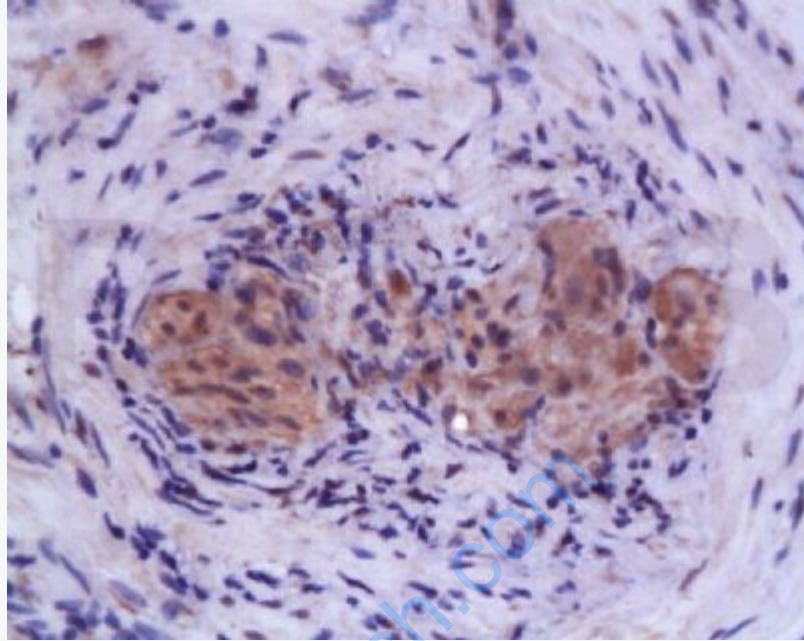
Lane2:Heart(Rat) Lysate at 30 ug

Primary: Anti-SynCAM/TSLC1 (SL1147R) at 1:200;

Secondary: HRP conjugated Goat-Anti-Rabbit IgG(bse-0295G) at 1: 3000;

Predicted band size : 44kD

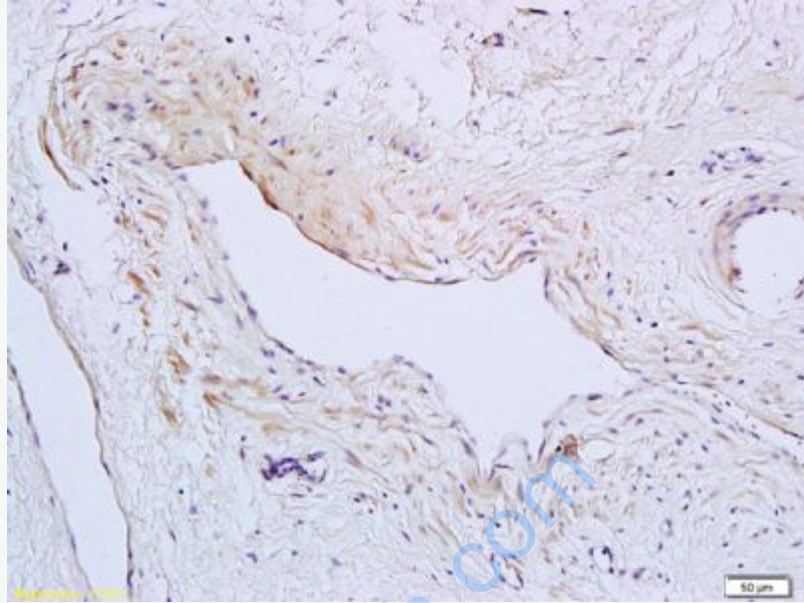
Observed band size : 44kD



Tissue/cell: human colon carcinoma; 4% Paraformaldehyde-fixed and paraffin-embedded;

Antigen retrieval: citrate buffer (0.01M, pH 6.0), Boiling bathing for 15min; Block endogenous peroxidase by 3% Hydrogen peroxide for 30min; Blocking buffer (normal goat serum,C-0005) at 37°C for 20 min;

Incubation: Anti-SynCAM/TSLC1 Polyclonal Antibody, Unconjugated(SL1147R) 1:200, overnight at 4°C, followed by conjugation to the secondary antibody(SP-0023) and DAB(C-0010) staining



Tissue/cell: human cervical carcinoma; 4% Paraformaldehyde-fixed and paraffin-embedded;

Antigen retrieval: citrate buffer (0.01M, pH 6.0), Boiling bathing for 15min; Block endogenous peroxidase by 3% Hydrogen peroxide for 30min; Blocking buffer (normal goat serum,C-0005) at 37°C for 20 min;

Incubation: Anti-SynCAM/TSLC1 Polyclonal Antibody, Unconjugated(SL1147R) 1:200, overnight at 4°C, followed by conjugation to the secondary antibody(SP-0023) and DAB(C-0010) staining