



Rabbit Anti-Torsin B antibody

SL11491R

Product Name:	Torsin B
Chinese Name:	扭转蛋白B抗体
Alias:	DQ1; Tor1b; Torsin 1B; TOR1B; FKSG18; Torsin family 1 member B; TOR1B_HUMAN.
Organism Species:	Rabbit
Clonality:	Polyclonal
React Species:	Human,Mouse,Rat,Dog,Cow,Horse,Sheep,
Applications:	WB=1:500-2000ELISA=1:500-1000IHC-P=1:400-800IHC-F=1:400-800ICC=1:100-500IF=1:100-500 (Paraffin sections need antigen repair) not yet tested in other applications. optimal dilutions/concentrations should be determined by the end user.
Molecular weight:	36kDa
Cellular localization:	cytoplasmic
Form:	Lyophilized or Liquid
Concentration:	1mg/ml
immunogen:	KLH conjugated synthetic peptide derived from human Torsin B:281-336/336
Lsotype:	IgG
Purification:	affinity purified by Protein A
Storage Buffer:	0.01M TBS(pH7.4) with 1% BSA, 0.03% Proclin300 and 50% Glycerol.
Storage:	Store at -20 °C for one year. Avoid repeated freeze/thaw cycles. The lyophilized antibody is stable at room temperature for at least one month and for greater than a year when kept at -20°C. When reconstituted in sterile pH 7.4 0.01M PBS or diluent of antibody the antibody is stable for at least two weeks at 2-4 °C.
PubMed:	PubMed
Product Detail:	TorsinB is a 336 amino acid protein that localizes to the lumen of endoplasmic reticulum and belongs to the Torsin family. Expressed in a variety of tissues with particularly high levels in adult brain, TorsinB is thought to function as a molecular chaperone that assists in the conformational folding of membrane and secreted proteins. Via its ability to regulate protein folding, TorsinB plays a key role in postnatal developmental events and is essential for proper neurological development. TorsinB

contains two PKC (protein kinase C) phosphorylations sites, one ATP binding domain and several conserved cysteines and shares 69% amino acid identity with TorsinA, a related family member. Defects in the gene encoding TorsinB are associated with torsion dystonia, an autosomal dominant neurological disorder that is characterized by debilitating muscle contractions throughout the body.

Function:

Torsins are members of the AAA(+) superfamily of ATPases and are present in all multicellular organisms. Torsin B is an ER protein involved implicated in neurogenesis, neuronal migration, axon/dendrite development and synaptogenesis.

Subcellular Location:

Endoplasmic reticulum and nuclear envelope

Tissue Specificity:

Widely expressed with low levels in brain. Not detected in fetal brain.

Similarity:

Belongs to the clpA/clpB family. Torsin subfamily.

SWISS:

O14657

Gene ID:

27348

Database links:

[Entrez Gene: 27348](#)Human

[Entrez Gene: 30934](#)Mouse

[Omim: 608050](#)Human

[SwissProt: O14657](#)Human

[SwissProt: Q9ER41](#)Mouse

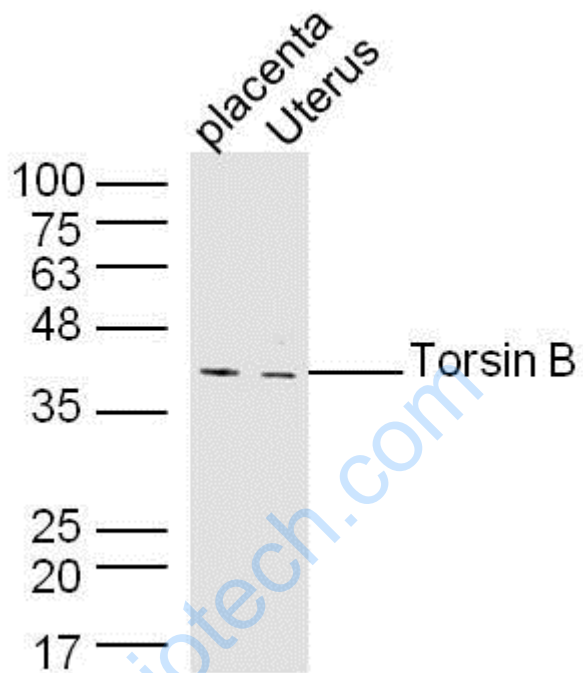
[Unigene: 252682](#)Human

[Unigene: 249164](#)Mouse

Important Note:

This product as supplied is intended for research use only, not for use in human, therapeutic or diagnostic applications.

Picture:



Sample:

Placenta (Mouse) Lysate at 40 ug

Uterus (Mouse) Lysate at 40 ug

Primary: Anti-Torsin B (SL11491R) at 1/300 dilution

Secondary: IRDye800CW Goat Anti-Rabbit IgG at 1/20000 dilution

Predicted band size: 36 kD

Observed band size: 40 kD