



## Rabbit Anti-SORCS3 antibody

SL11503R

<b>Product Name:</b>	SORCS3
<b>Chinese Name:</b>	液泡蛋白分选受体SORCS3抗体
<b>Alias:</b>	6330404A12Rik; KIAA1059; RP11 107L7.1; SORC3_HUMAN; SORCS 3; SORCS; SORCS3; Sortilin related VPS10 domain containing receptor 3; VPS10 domain containing receptor SorCS3; VPS10 domain receptor protein SORCS 3; VPS10 domain-containing receptor SorCS3.
<b>Organism Species:</b>	Rabbit
<b>Clonality:</b>	Polyclonal
<b>React Species:</b>	Human,Mouse,Rat,Chicken,Dog,Pig,Cow,Sheep,
<b>Applications:</b>	WB=1:500-2000ELISA=1:500-1000IHC-P=1:400-800IHC-F=1:400-800ICC=1:100-500IF=1:100-500 (Paraffin sections need antigen repair) not yet tested in other applications. optimal dilutions/concentrations should be determined by the end user.
<b>Molecular weight:</b>	132kDa
<b>Cellular localization:</b>	The cell membrane
<b>Form:</b>	Lyophilized or Liquid
<b>Concentration:</b>	1mg/ml
<b>immunogen:</b>	KLH conjugated synthetic peptide derived from human SORCS3:201-300/1222
<b>Lsotype:</b>	IgG
<b>Purification:</b>	affinity purified by Protein A
<b>Storage Buffer:</b>	0.01M TBS(pH7.4) with 1% BSA, 0.03% Proclin300 and 50% Glycerol.
<b>Storage:</b>	Store at -20 °C for one year. Avoid repeated freeze/thaw cycles. The lyophilized antibody is stable at room temperature for at least one month and for greater than a year when kept at -20°C. When reconstituted in sterile pH 7.4 0.01M PBS or diluent of antibody the antibody is stable for at least two weeks at 2-4 °C.
<b>PubMed:</b>	<a href="#">PubMed</a>
<b>Product Detail:</b>	This gene encodes one family member of vacuolar protein sorting 10 (VPS10) domain-containing receptor proteins. The VPS10 domain name comes from the yeast carboxypeptidase Y sorting receptor Vps10 protein. Members of this gene family are large with many exons but the CDS lengths are usually less than 3700 nt. Very large

introns typically separate the exons encoding the VPS10 domain; the remaining exons are separated by much smaller-sized introns. These genes are strongly expressed in the central nervous system. Two of the five family members (sortilin and sortilin-related receptor) are synthesized as preproteins; it is not yet known if this encoded protein is also a preprotein.

**Subcellular Location:**

Membrane; Single-pass type I membrane protein.

**Tissue Specificity:**

Highly expressed in brain.

**Similarity:**

Belongs to the VPS10-related sortilin family. SORCS subfamily.

Contains 6 BNR repeats.

Contains 1 PKD domain.

**SWISS:**

Q9UPU3

**Gene ID:**

22986

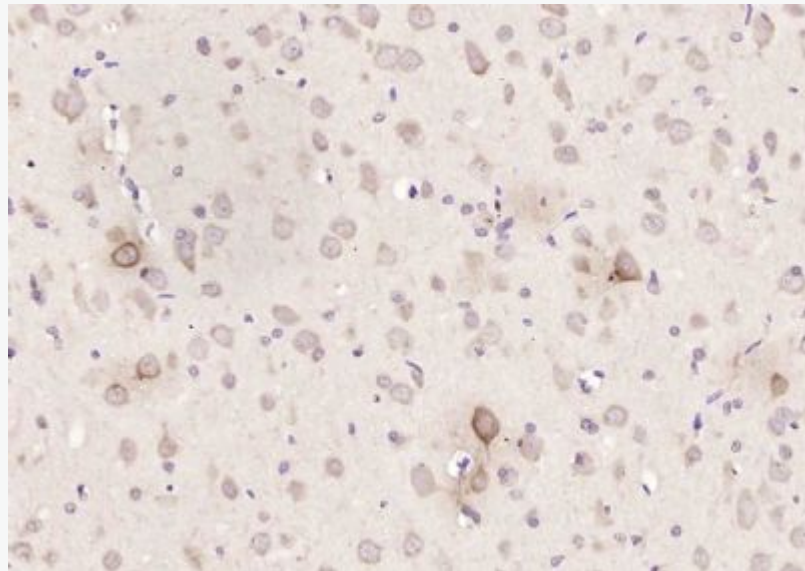
**Database links:**

UniProtKB/Swiss-Prot: Q9UPU3.2

**Important Note:**

This product as supplied is intended for research use only, not for use in human, therapeutic or diagnostic applications.

**Picture:**



Paraformaldehyde-fixed, paraffin embedded (rat brain); Antigen retrieval by boiling in sodium citrate buffer (pH6.0) for 15min; Block endogenous peroxidase by 3% hydrogen peroxide for 20 minutes; Blocking buffer (normal goat serum) at 37°C for 30min; Antibody incubation with (SORCS3) Polyclonal Antibody, Unconjugated (SL11503R) at 1:200 overnight at 4°C, followed by operating according to SP Kit(Rabbit) (sp-0023) instructions and DAB staining.

[www.sunlongbiotech.com](http://www.sunlongbiotech.com)