



Rabbit Anti-NPY5R antibody

SL11521R

Product Name:	NPY5R
Chinese Name:	神经肽Y受体5抗体
Alias:	Neuropeptide Y receptor type 5; Neuropeptide Y receptor Y5; NPY 5R; NPY R5; NPY Y5; NPY Y5 receptor; NPY-Y5 receptor; NPY5 R; NPY5-R; NPY5R; NPY5R HUMAN; NPYR 5; NPYR5; NPYY 5; NPYY5; NPYY5-R; Y5 receptor.
Organism Species:	Rabbit
Clonality:	Polyclonal
React Species:	Human,Mouse,Dog,Cow,Horse,Rabbit,
Applications:	WB=1:500-2000ELISA=1:500-1000 not yet tested in other applications. optimal dilutions/concentrations should be determined by the end user.
Molecular weight:	51kDa
Cellular localization:	The cell membrane
Form:	Lyophilized or Liquid
Concentration:	1mg/ml
immunogen:	KLH conjugated synthetic peptide derived from human NPY5R:1-100/445<Extracellular>
Lsotype:	IgG
Purification:	affinity purified by Protein A
Storage Buffer:	0.01M TBS(pH7.4) with 1% BSA, 0.03% Proclin300 and 50% Glycerol.
Storage:	Store at -20 °C for one year. Avoid repeated freeze/thaw cycles. The lyophilized antibody is stable at room temperature for at least one month and for greater than a year when kept at -20°C. When reconstituted in sterile pH 7.4 0.01M PBS or diluent of antibody the antibody is stable for at least two weeks at 2-4 °C.
PubMed:	PubMed
Product Detail:	Pancreatic polypeptide (PP), neuropeptide Y (NPY), and peptide YY (PYY) are related 36-amino acid hormones. A number of structurally related receptors for these peptides have been isolated, NPY1-R, NPY2-R, NPY3-R, NPY4-R, NPY5-R, and NPY6-R. NPY4-R is expressed in several human tissues, including brain, coronary artery, and ileum. NPY4-R maps to human chromosome 10q11.2. NPY-5R, isolated from rat

hypothalamus, encodes a 456-amino acid protein with less than 35% overall identity to known Y-type receptors. The human NPY5-R sequence is nearly identical to, but in the opposite orientation from, that of the human NPY1-R sequence. NPY5-R localizes to the paraventricular hypothalamic nucleus, the lateral hypothalamus, and other locations consistent with a role in the control of feeding behavior. The gene which encodes NPY5-R maps to human chromosome 4q32.2. NPY6-R is abundantly expressed in human heart and skeletal muscle and the gene which encodes NPY6-R maps to human chromosome 5q31.

Function:

Receptor for neuropeptide Y and peptide YY. The activity of this receptor is mediated by G proteins that inhibit adenylate cyclase activity. Seems to be associated with food intake. Could be involved in feeding disorders.

Subcellular Location:

Cell membrane; Multi-pass membrane protein.

Tissue Specificity:

Brain; hypothalamus.

Similarity:

Belongs to the G-protein coupled receptor 1 family.

SWISS:

Q15761

Gene ID:

4889

Database links:

[Entrez Gene: 4889](#)Human

[Entrez Gene: 18168](#)Mouse

[Entrez Gene: 25340](#)Rat

[Omim: 602001](#)Human

[SwissProt: Q15761](#)Human

[SwissProt: O70342](#)Mouse

[SwissProt: Q63634](#)Rat

[Unigene: 519058](#)Human

[Unigene: 598503](#)Human

[Unigene: 10685](#)Mouse

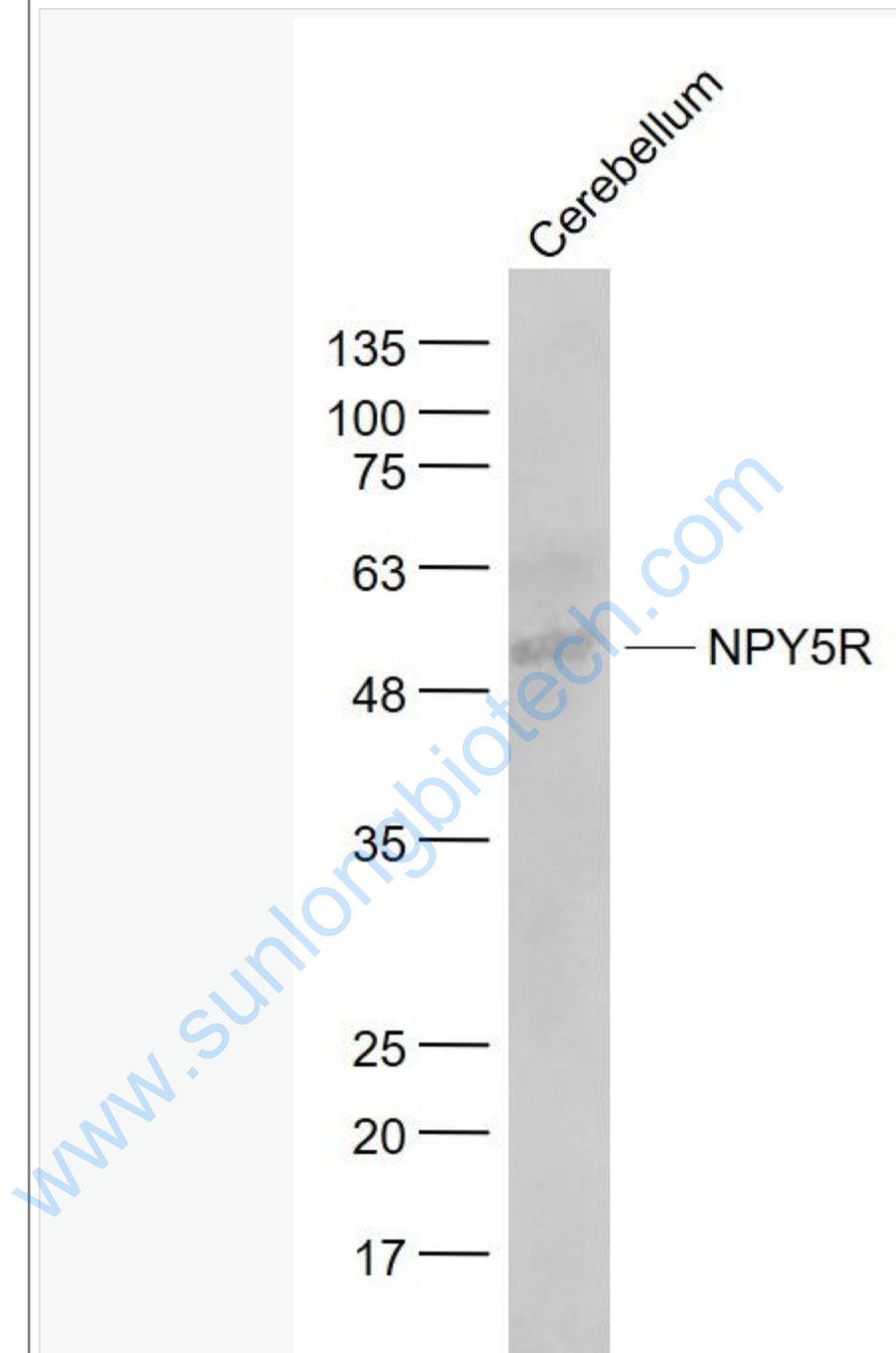
[Unigene: 10532](#)Rat

Important Note:

This product as supplied is intended for research use only, not for use in human, therapeutic or diagnostic applications.

www.sunlongbiotech.com

Picture:



Sample:

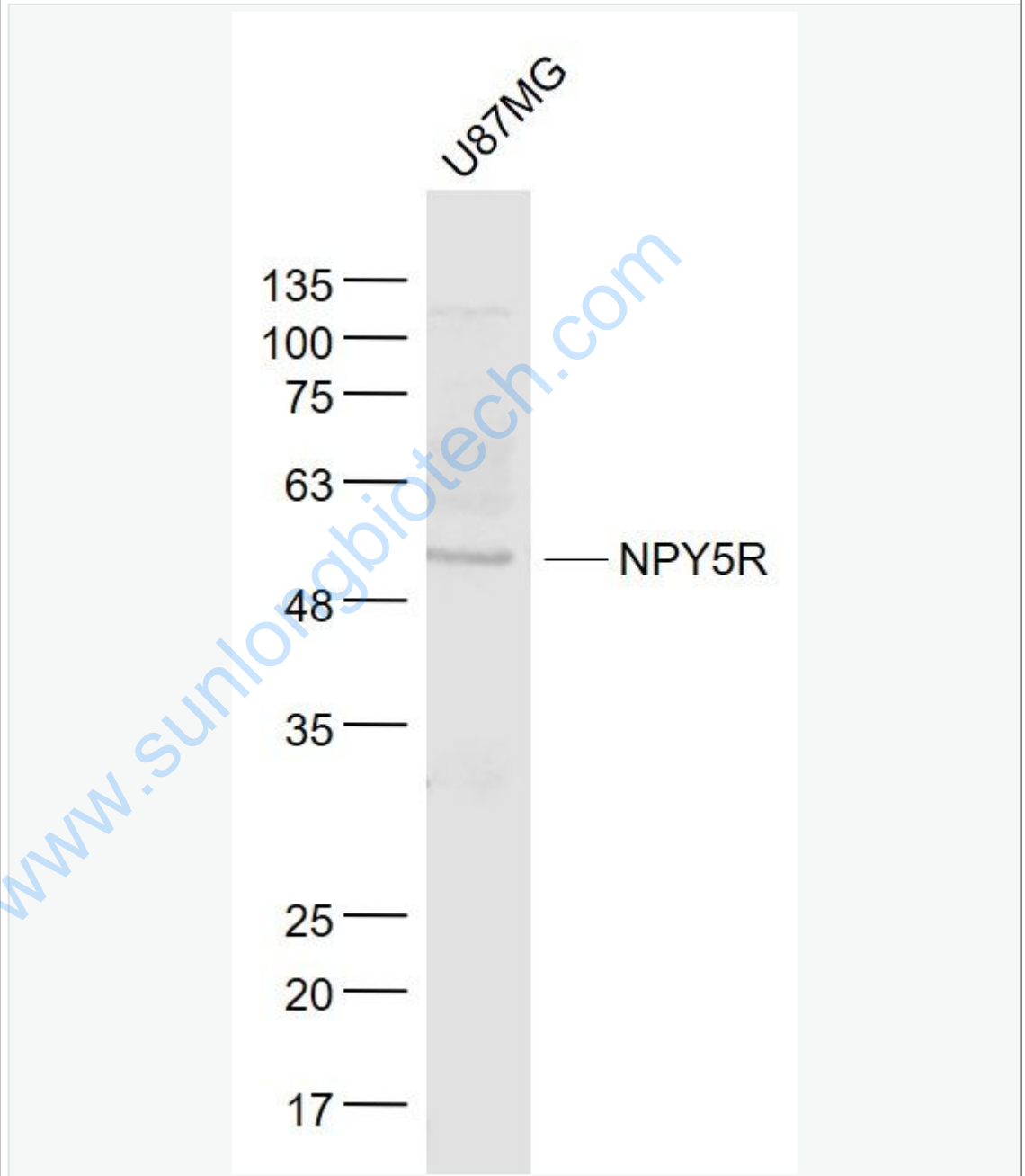
Cerebellum (Mouse) Lysate at 40 ug

Primary: Anti- NPY5R (SL11521R) at 1/1000 dilution

Secondary: IRDye800CW Goat Anti-Rabbit IgG at 1/20000 dilution

Predicted band size: 51 kD

Observed band size: 53 kD



Sample:

U87MG(Human) Cell Lysate at 30 ug

Primary: Anti- NPY5R (SL11521R) at 1/1000 dilution

Secondary: IRDye800CW Goat Anti-Rabbit IgG at 1/20000 dilution

Predicted band size: 51 kD

Observed band size: 53 kD

www.sunlongbiotech.com