



## Rabbit Anti-NPY4R antibody

SL11522R

|                               |   |
|-------------------------------|---|
| <b>Product Name:</b>          | NPY4R   |
| <b>Chinese Name:</b>          | 神经肽Y受体4抗体   |
| <b>Alias:</b>                 | Neuropeptide Y receptor type 4; Neuropeptide Y receptor Y4; NPY 4R; NPY R4; NPY Y4; NPY Y4 receptor; NPY-Y4 receptor; NPY4 R; NPY4-R; NPY4R; NPY4R HUMAN; NPYR 4; NPYR4; NPYY 4; NPYY4; NPYY4-R; Y4 receptor.   |
| <b>Organism Species:</b>      | Rabbit  |
| <b>Clonality:</b>             | Polyclonal  |
| <b>React Species:</b>         | Human,Mouse,Rabbit,   |
| <b>Applications:</b>          | WB=1:500-2000ELISA=1:500-1000IHC-P=1:400-800IHC-F=1:400-800ICC=1:100-500IF=1:100-500 (Paraffin sections need antigen repair)<br>not yet tested in other applications.<br>optimal dilutions/concentrations should be determined by the end user.   |
| <b>Molecular weight:</b>      | 42kDa   |
| <b>Cellular localization:</b> | The cell membrane   |
| <b>Form:</b>                  | Lyophilized or Liquid   |
| <b>Concentration:</b>         | 1mg/ml  |
| <b>immunogen:</b>             | KLH conjugated synthetic peptide derived from human NPY4R:151-250/375<Extracellular>  |
| <b>Lsotype:</b>               | IgG   |
| <b>Purification:</b>          | affinity purified by Protein A  |
| <b>Storage Buffer:</b>        | 0.01M TBS(pH7.4) with 1% BSA, 0.03% Proclin300 and 50% Glycerol.  |
| <b>Storage:</b>               | Store at -20 °C for one year. Avoid repeated freeze/thaw cycles. The lyophilized antibody is stable at room temperature for at least one month and for greater than a year when kept at -20°C. When reconstituted in sterile pH 7.4 0.01M PBS or diluent of antibody the antibody is stable for at least two weeks at 2-4 °C.         |
| <b>PubMed:</b>                | <a href="#">PubMed</a>  |
| <b>Product Detail:</b>        | Pancreatic polypeptide (PP), neuropeptide Y (NPY), and peptide YY (PYY) are related 36-amino acid hormones. A number of structurally related receptors for these peptides have been isolated, NPY1-R, NPY2-R, NPY3-R, NPY4-R, NPY5-R, and NPY6-R. NPY4-R is expressed in several human tissues, including brain, coronary artery, and |

ileum. NPY4-R maps to human chromosome 10q11.2. NPY-5R, isolated from rat hypothalamus, encodes a 456-amino acid protein with less than 35% overall identity to known Y-type receptors. The human NPY5-R sequence is nearly identical to, but in the opposite orientation from, that of the human NPY1-R sequence. NPY5-R localizes to the paraventricular hypothalamic nucleus, the lateral hypothalamus, and other locations consistent with a role in the control of feeding behavior. The gene which encodes NPY5-R maps to human chromosome 4q32.2. NPY6-R is abundantly expressed in human heart and skeletal muscle and the gene which encodes NPY6-R maps to human chromosome 5q31.

**Function:**

NPY4R has been reported to be expressed in bladder, brain, colon, endometrium, heart, lung, nasal mucosa, penis, prostate, skeletal muscle, small intestine, stomach, and vessel. ESTs have been isolated from human colon and head/neck libraries.

**Subcellular Location:**

Cell membrane; Multi-pass membrane protein.

**Tissue Specificity:**

Highest levels found in brain, coronary artery and ileum. Low levels in pancreas and kidney. Detected in colon and small intestine.

**Similarity:**

Belongs to the G-protein coupled receptor 1 family.

**SWISS:**

P50391

**Gene ID:**

5540

**Database links:**

[Entrez Gene: 505889](#)Cow

[Entrez Gene: 101141797](#)Gorilla

[Entrez Gene: 100052105](#)Horse

[Entrez Gene: 100996758](#)Human

[Entrez Gene: 5540](#)Human

[Entrez Gene: 397475](#)Pig

[Omim: 601790](#)Human

[SwissProt: P50391](#)Human

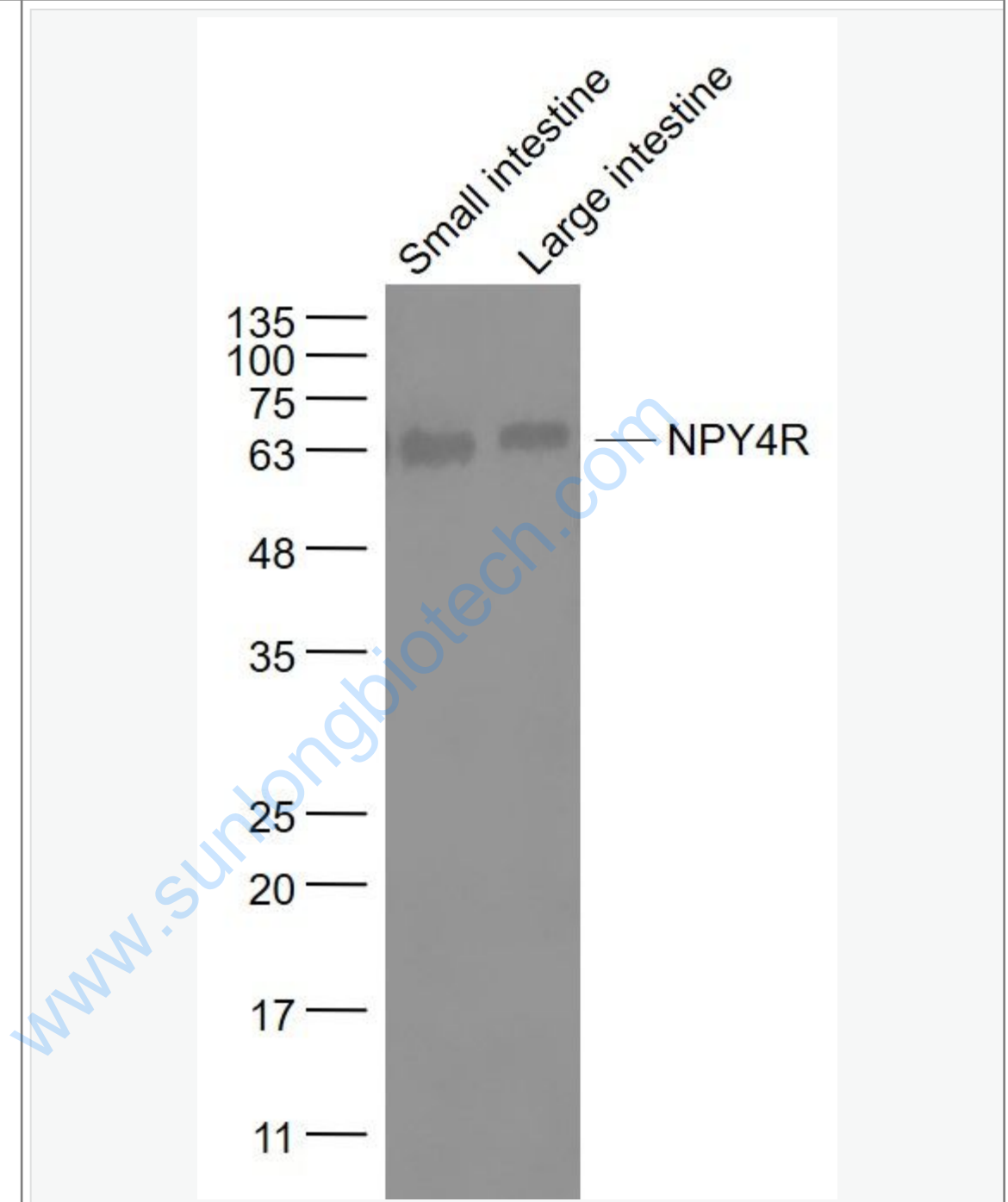
[Unigene: 524719](#)Human

**Important Note:**

This product as supplied is intended for research use only, not for use in human, therapeutic or diagnostic applications.

[www.sunlongbiotech.com](http://www.sunlongbiotech.com)

Picture:



Sample:

Small intestine (Mouse) Lysate at 40 ug

Large intestine (Mouse) Lysate at 40 ug

Primary: Anti- NPY4R (SL11522R) at 1/1000 dilution

Secondary: IRDye800CW Goat Anti-Rabbit IgG at 1/20000 dilution

Predicted band size: 42 kD

Observed band size: 62 kD

[www.sunlongbiotech.com](http://www.sunlongbiotech.com)