



Rabbit Anti-LAR antibody

SL11530R

Product Name:	LAR
Chinese Name:	受体蛋白酪氨酸磷酸酶F抗体
Alias:	LAR; LAR protein; LARFN5C; PTPRF; LARS; LCA homolog; Leukocyte antigen related (LAR) PTP receptor; Leukocyte antigen related; Leukocyte antigen related PTP receptor; Leukocyte antigen related tyrosine phosphatase; Leukocyte common antigen related; Protein Tyrosine Phosphatase Receptor Type F; Protein tyrosine phosphatase receptor type F polypeptide; Ptprf; PTPRF protein; PTPRF_HUMAN; Receptor linked protein tyrosine phosphatase LAR; Receptor type tyrosine protein phosphatase F; Receptor type tyrosine protein phosphatase F precursor; Receptor-type tyrosine-protein phosphatase F.
Organism Species:	Rabbit
Clonality:	Polyclonal
React Species:	Human,Mouse,Rat,Dog,Cow,Horse,Rabbit,Sheep,
Applications:	ELISA=1:500-1000IHC-P=1:400-800IHC-F=1:400-800Flow-Cyt=1µg/TestICC=1:100-500IF=1:100-500 (Paraffin sections need antigen repair) not yet tested in other applications. optimal dilutions/concentrations should be determined by the end user.
Molecular weight:	210kDa
Cellular localization:	The cell membrane
Form:	Lyophilized or Liquid
Concentration:	1mg/ml
immunogen:	KLH conjugated synthetic peptide derived from human PTPRF:30-100/1907<Extracellular>
Isotype:	IgG
Purification:	affinity purified by Protein A
Storage Buffer:	0.01M TBS(pH7.4) with 1% BSA, 0.03% Proclin300 and 50% Glycerol.
Storage:	Store at -20 °C for one year. Avoid repeated freeze/thaw cycles. The lyophilized antibody is stable at room temperature for at least one month and for greater than a year when kept at -20°C. When reconstituted in sterile pH 7.4 0.01M PBS or diluent of antibody the antibody is stable for at least two weeks at 2-4 °C.

PubMed:[PubMed](#)

The protein encoded by this gene is a member of the protein tyrosine phosphatase (PTP) family. PTPs are known to be signaling molecules that regulate a variety of cellular processes including cell growth, differentiation, mitotic cycle, and oncogenic transformation. This PTP possesses an extracellular region, a single transmembrane region, and two tandem intracytoplasmic catalytic domains, and thus represents a receptor-type PTP. The extracellular region contains three Ig-like domains, and nine non-Ig like domains similar to that of neural-cell adhesion molecule. This PTP was shown to function in the regulation of epithelial cell-cell contacts at adherents junctions, as well as in the control of beta-catenin signaling. An increased expression level of this protein was found in the insulin-responsive tissue of obese, insulin-resistant individuals, and may contribute to the pathogenesis of insulin resistance. Two alternatively spliced transcript variants of this gene, which encode distinct proteins, have been reported. [provided by RefSeq, Jul 2008]

Function:

Possible cell adhesion receptor. It possesses an intrinsic protein tyrosine phosphatase activity.

The first PTPase domain has enzymatic activity, while the second one seems to affect the substrate specificity of the first one.

Subunit:

Interacts with GRIP1. Interacts with PPFIA1, PPFIA2 and PPFIA3. Interacts with INSR.

Subcellular Location:

Membrane; Single-pass type I membrane protein.

Similarity:

Belongs to the protein-tyrosine phosphatase family. Receptor class 2A subfamily.

Contains 8 fibronectin type-III domains.

Contains 3 Ig-like C2-type (immunoglobulin-like) domains.

Contains 2 tyrosine-protein phosphatase domains.

SWISS:

P10586

Gene ID:

5792

Database links:

[Entrez Gene: 5792](#) Human

[Entrez Gene: 19268](#) Mouse

Product Detail:

[Entrez Gene: 360406](#) Rat

[Entrez Gene: 12072](#) Cow

[Omid: 179590](#) Human

[SwissProt: P10586](#) Human

[SwissProt: Q5T021](#) Human

[SwissProt: Q5T022](#) Human

[SwissProt: Q86WS0](#) Human

[SwissProt: A2A8L5](#) Mouse

[SwissProt: Q9EQ17](#) Mouse

[SwissProt: Q64604](#) Rat

[Unigene: 272062](#) Human

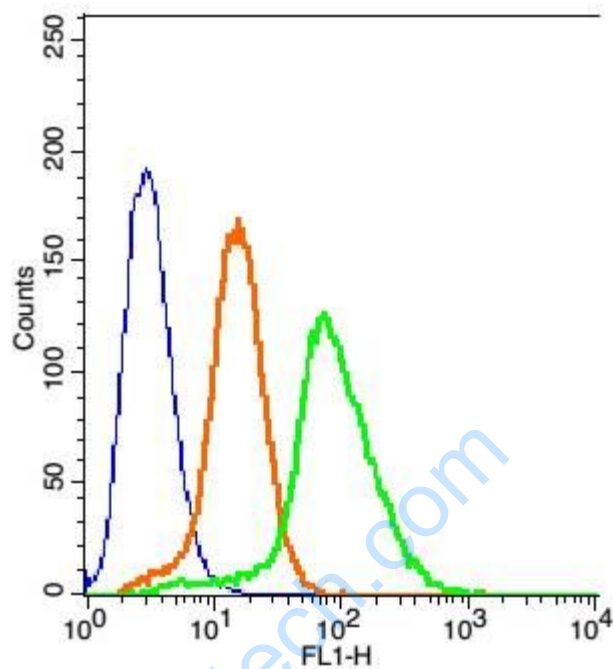
[Unigene: 29855](#) Mouse

[Unigene: 11386](#) Rat

Important Note:

This product as supplied is intended for research use only, not for use in human, therapeutic or diagnostic applications.

Picture:



Blank control(blue): Hela Cells(fixed with 2% paraformaldehyde (10 min)).

Primary Antibody: Rabbit Anti-LAR/AF488 Conjugated antibody (SL11530R),

Dilution: 1 μ g in 100 μ L 1X PBS containing 0.5% BSA;

Isotype Control Antibody: Rabbit IgG/AF488(orange) ,used under the same conditions.