



Rabbit Anti-NPW/Neuropeptide W antibody

SL11531R

Product Name:	NPW/Neuropeptide W
Chinese Name:	神经肽W抗体
Alias:	hPPL8; L8; L8C; Neuropeptide W; PPL8; PPNPW; Preproprotein L8; NPW_HUMAN.
Organism Species:	Rabbit
Clonality:	Polyclonal
React Species:	Human,Mouse,Rat,Cow,
Applications:	ELISA=1:500-1000IHC-P=1:400-800IHC-F=1:400-800ICC=1:100-500IF=1:100-500 (Paraffin sections need antigen repair) not yet tested in other applications. optimal dilutions/concentrations should be determined by the end user.
Molecular weight:	3kDa
Cellular localization:	Secretory protein
Form:	Lyophilized or Liquid
Concentration:	1mg/ml
immunogen:	KLH conjugated synthetic peptide derived from human Neuropeptide W:33-55/165
Lsotype:	IgG
Purification:	affinity purified by Protein A
Storage Buffer:	0.01M TBS(pH7.4) with 1% BSA, 0.03% Proclin300 and 50% Glycerol.
Storage:	Store at -20 °C for one year. Avoid repeated freeze/thaw cycles. The lyophilized antibody is stable at room temperature for at least one month and for greater than a year when kept at -20°C. When reconstituted in sterile pH 7.4 0.01M PBS or diluent of antibody the antibody is stable for at least two weeks at 2-4 °C.
PubMed:	PubMed
Product Detail:	NPW is a 165 amino acid secreted protein that is cleaved into two chains: neuropeptide W-23 (also designated NPW23 or L8) and neuropeptide W-30 (also known as NPW30 or L8C). Both NPW neuropeptides activate G-protein coupled receptors in the central nervous system to enhance cortisol secretion. Highly expressed in lymphoblastic leukemia, colorectal adenocarcinoma, fetal kidney, trachea and substantia nigra, NPW is also found at low levels in placenta, ovary, testis and uterus. NPW functions in organization of neuroendocrine signals and is also thought to enhance food and water

intake as well as stress responses. The gene encoding NPW maps to human chromosome 16p13.3.

Function:

NPW is processed into 23- and 30-amino acid neuropeptides that bind and activate two G-protein coupled receptors in the central nervous system. The neuropeptides have been shown to enhance cortisol secretion from adrenal cells through the adenylate cyclase/protein kinase A signaling cascade. The preproprotein is translated using a non-AUG initiation codon that is inferred from analyses of the mouse ortholog.

Subcellular Location:

Secreted

Tissue Specificity:

Detected at high levels in the substantia nigra, fetal kidney and trachea; at lower levels in testis, uterus, ovary and placenta. Not detectable in many regions of the central nervous system. Also detected at high levels in lymphoblastic leukemia and colorectal adenocarcinoma.

Similarity:

Belongs to the neuropeptide B/W family.

SWISS:

Q8N729

Gene ID:

283869

Database links:

[Entrez Gene: 283869](#)Human

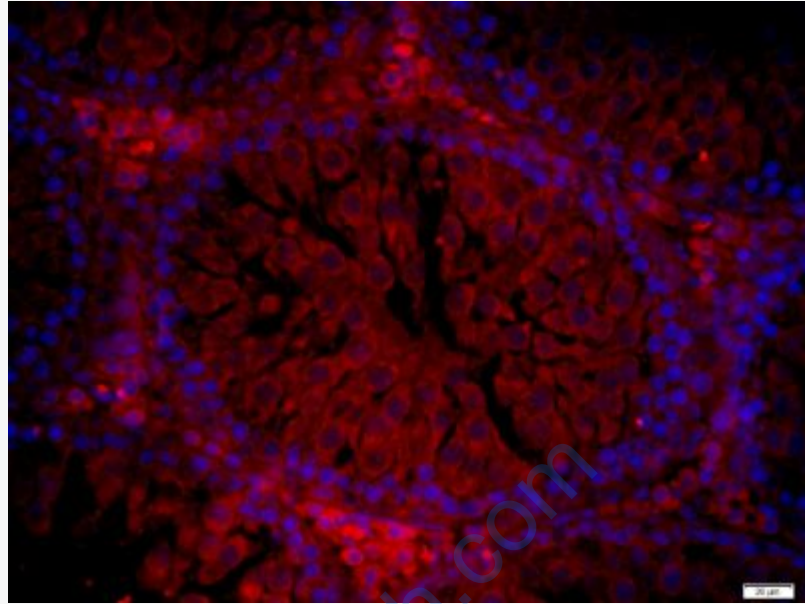
[Omin: 607997](#)Human

[SwissProt: Q8N729](#)Human

Important Note:

This product as supplied is intended for research use only, not for use in human, therapeutic or diagnostic applications.

Picture:



Paraformaldehyde-fixed, paraffin embedded (rat testis); Antigen retrieval by boiling in sodium citrate buffer (pH6) for 15min; Block endogenous peroxidase by 3% hydrogen peroxide for 20 minutes; Blocking buffer (normal goat serum) at 37°C for 30min; Antibody incubation with (Neuropeptide W) Polyclonal Antibody, Unconjugated (SL11531R) at 1:400 overnight at 4°C, followed by a conjugated secondary (SL11531R) at [1:500] for 90 minutes and DAPI staining of the nuclei.