



## Rabbit Anti-PTPRN antibody

SL11532R

<b>Product Name:</b>	PTPRN
<b>Chinese Name:</b>	蛋白酪氨酸磷酸酶样N前体蛋白抗体
<b>Alias:</b>	PTPIA2; RPTPN; TPIA2; CA 512; IA 2; IA 2/PTP; IA2; IA2/PTP; ICA 3; ICA 512; ICA3; ICA512; Islet cell antigen 2; Islet cell antigen 512; Islet cell autoantigen 3; Protein tyrosine phosphatase like N; Protein tyrosine phosphatase like N precursor; Protein tyrosine phosphatase receptor type N; PTP IA 2; PTP IA-2; PTP IA2; PTPIA 2; PTPN; Ptpm; PTPRN protein; PTPRN_HUMAN; R PTP N; R-PTP-N; Receptor type tyrosine protein phosphatase like N; Receptor-type tyrosine-protein phosphatase-like N.
<b>Organism Species:</b>	Rabbit
<b>Clonality:</b>	Polyclonal
<b>React Species:</b>	Human,Mouse,Rat,Pig,Cow,Sheep,
<b>Applications:</b>	ELISA=1:500-1000IHC-P=1:400-800IHC-F=1:400-800Flow-Cyt=3µg/TestICC=1:100-500IF=1:100-500 (Paraffin sections need antigen repair) not yet tested in other applications. optimal dilutions/concentrations should be determined by the end user.
<b>Molecular weight:</b>	102kDa
<b>Cellular localization:</b>	The cell membrane
<b>Form:</b>	Lyophilized or Liquid
<b>Concentration:</b>	1mg/ml
<b>immunogen:</b>	KLH conjugated synthetic peptide derived from human TPIA2:501-600/979<Extracellular>
<b>Lsotype:</b>	IgG
<b>Purification:</b>	affinity purified by Protein A
<b>Storage Buffer:</b>	0.01M TBS(pH7.4) with 1% BSA, 0.03% Proclin300 and 50% Glycerol.
<b>Storage:</b>	Store at -20 °C for one year. Avoid repeated freeze/thaw cycles. The lyophilized antibody is stable at room temperature for at least one month and for greater than a year when kept at -20°C. When reconstituted in sterile pH 7.4 0.01M PBS or diluent of antibody the antibody is stable for at least two weeks at 2-4 °C.
<b>PubMed:</b>	<a href="#">PubMed</a>
<b>Product Detail:</b>	The protein encoded by this gene is a member of the protein tyrosine phosphatase (PTP)

family. PTPs are known to be signaling molecules that regulate a variety of cellular processes including cell growth, differentiation, mitotic cycle, and oncogenic transformation. This PTP possesses an extracellular region, a single transmembrane region, and a single catalytic domain, and thus represents a receptor-type PTP. This PTP was found to be an autoantigen that is reactive with insulin-dependent diabetes mellitus (IDDM) patient sera, and thus may be a potential target of autoimmunity in diabetes mellitus. Alternate splicing results in multiple transcript variants.[provided by RefSeq, Dec 2010]

**Function:**

Implicated in neuroendocrine secretory processes. May be involved in processes specific for neurosecretory granules, such as their biogenesis, trafficking or regulated exocytosis or may have a general role in neuroendocrine functions. Seems to lack intrinsic enzyme activity. May play a role in the regulation of secretory granules via its interaction with SNTB2.

**Subunit:**

Interacts with phosphorylated SNTB2, protecting it from protein cleavage by CAPN1. Dephosphorylation of SNTB2 upon insulin stimulation disrupts the interaction and results in its cleavage.

**Subcellular Location:**

Membrane. Neuroendocrine secretory granules.

**Tissue Specificity:**

Expression is restricted to neuroendocrine cells. Found in pancreas, brain and pituitary.

**Post-translational modifications:**

Appears to undergo multiple proteolytic cleavage at consecutive basic residues.

**Similarity:**

Belongs to the protein-tyrosine phosphatase family. Receptor class 8 subfamily. Contains 1 tyrosine-protein phosphatase domain.

**SWISS:**

Q16849

**Gene ID:**

5798

**Database links:**

[Entrez Gene: 5798](#) Human

[Entrez Gene: 19275](#) Mouse

[Entrez Gene: 116660](#) Rat

[Entrez Gene: 286810](#) Cow

[Omim: 601773](#) Human

[SwissProt: P56722](#) Cow

[SwissProt: Q16849](#) Human

[SwissProt: Q60673](#) Mouse

[SwissProt: Q63259](#) Rat

[Unigene: 89655](#) Human

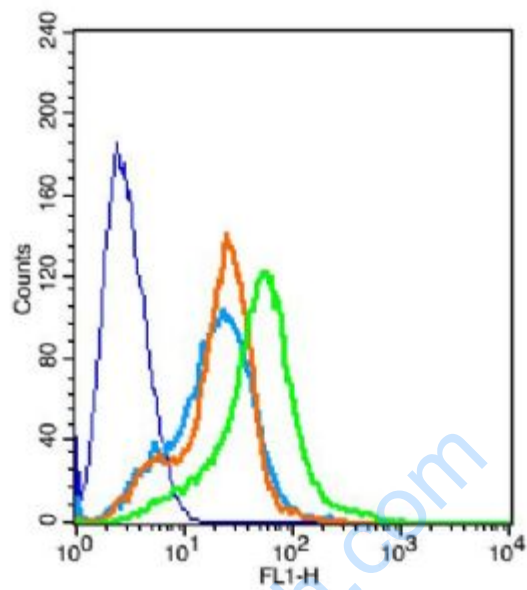
[Unigene: 2902](#) Mouse

[Unigene: 11097](#) Rat

**Important Note:**

This product as supplied is intended for research use only, not for use in human, therapeutic or diagnostic applications.

Picture:



Key	Name	Parameter	Gate
—	RSC96-blank.028	FL1-H	G1
—	bs-0295G-FITC(B)-RSC96-6.053	FL1-H	G1
—	bs-0295P-(FITC)(B)-R#1FCC1C.054	FL1-H	G1
—	bs-11532R-(FITC)(B)-#1FCC32.063	FL1-H	G1

Positive control: RSC96

Isotype Control Antibody: Rabbit IgG ; Secondary Antibody: Goat anti-rabbit IgG-

FITC, Dilution: 1:100 in 1 X PBS containing 0.5% BSA ; Primary Antibody

Dilution: 3 $\mu$ g in 100  $\mu$ L 1X PBS containing 0.5% BSA.