



## Rabbit Anti-Centaurin alpha 1 antibody

SL11543R

<b>Product Name:</b>	Centaurin alpha 1
<b>Chinese Name:</b>	Centaurin $\alpha$ 1 抗体
<b>Alias:</b>	ArfGAP with dual PH domains 1; CENTA 1; CENTA1; Centaurin alpha; GCS1L; IP4/PIP3 binding protein; p42IP4; Putative MAPK activating protein PM25; ADAP1 HUMAN.
<b>Organism Species:</b>	Rabbit
<b>Clonality:</b>	Polyclonal
<b>React Species:</b>	Human,Mouse,Rat,Dog,Pig,Cow,Horse,Sheep,
<b>Applications:</b>	WB=1:500-2000ELISA=1:500-1000IHC-P=1:400-800IHC-F=1:400-800ICC=1:100-500IF=1:100-500 (Paraffin sections need antigen repair) not yet tested in other applications. optimal dilutions/concentrations should be determined by the end user.
<b>Molecular weight:</b>	43kDa
<b>Cellular localization:</b>	The nucleuscytoplasmicThe cell membrane
<b>Form:</b>	Lyophilized or Liquid
<b>Concentration:</b>	1mg/ml
<b>immunogen:</b>	KLH conjugated synthetic peptide derived from human Centaurin alpha 1:101-200/374
<b>Lsotype:</b>	IgG
<b>Purification:</b>	affinity purified by Protein A
<b>Storage Buffer:</b>	0.01M TBS(pH7.4) with 1% BSA, 0.03% Proclin300 and 50% Glycerol.
<b>Storage:</b>	Store at -20 °C for one year. Avoid repeated freeze/thaw cycles. The lyophilized antibody is stable at room temperature for at least one month and for greater than a year when kept at -20°C. When reconstituted in sterile pH 7.4 0.01M PBS or diluent of antibody the antibody is stable for at least two weeks at 2-4 °C.
<b>PubMed:</b>	<a href="#">PubMed</a>
<b>Product Detail:</b>	ADP-ribosylation factor (ARF) family of small GTP-binding proteins are involved in vesicular transport regulation and in controlling cytoskeletal organization and cell adhesion. These proteins are best characterized as regulators of membrane traffic. The Centaurin GTPase-activating protein family comprise a subset of ARF regulatory molecules that transduce PI 3-kinase activation into coordinated control of Arf-

dependent pathways. This family includes ASAP1, ACAP1, ACAP2, AGAP1, ARAP1, ARAP2, Centaurin a1 and Centaurin g3. The Centaurin a1 protein is a high affinity PtdIns(3,4,5)P3 binding protein enriched in brain. By acting as a GTPase activating protein for ADP ribosylation factor 6 (ARF6), Centaurin a1 is able to switch off ARF6 and inhibit its ability to mediate beta2-adrenoceptor internalization and negatively regulate ARF6 activity by functioning as an in vivo PIP3 dependent ARF6 GAP.

**Function:**

The centaurin alpha 1 protein is a high affinity PtdIns(3,4,5)P3 binding protein enriched in brain. By acting as a GTPase activating protein for ADP ribosylation factor 6 (ARF6), centaurin alpha 1 is able to switch off ARF6 and inhibit its ability to mediate beta 2 adrenoceptor internalization and negatively regulates ARF6 activity by functioning as an in vivo PIP3 dependent ARF6 GAP.

**Subunit:**

Interacts with PRKCA, PRKCI and PRKCZ. Interacts with the N-terminal region of PRKD1.

**Subcellular Location:**

Cellular localization Cytoplasmic, Nuclear and Plasma membrane

**Tissue Specificity:**

Expressed at highest levels in brain and at lower levels in peripheral blood leukocytes.

**Post-translational modifications:**

Phosphorylated by PRKCA, PRKCI, PRKCZ and PRKD1 in vitro.

**Similarity:**

Contains 1 Arf-GAP domain.  
Contains 2 PH domains.

**SWISS:**

O75689

**Gene ID:**

11033

**Database links:**

[Entrez Gene: 11033](#)Human

[Entrez Gene: 231821](#)Mouse

[Entrez Gene: 397453](#)Pig

[Entrez Gene: 171097](#)Rat

[Omid: 608114](#)Human

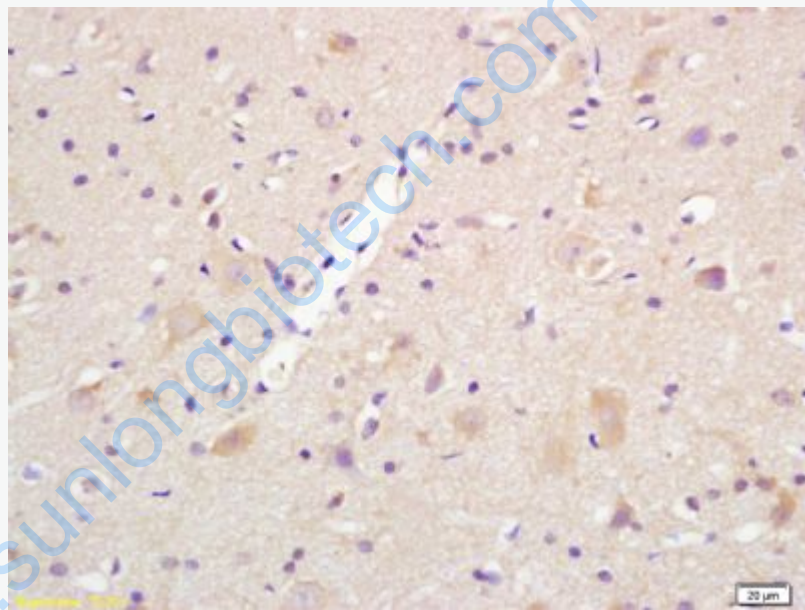
[SwissProt: O75689](#)Human

[Unigene: 297819](#)Mouse

[Unigene: 10539](#)Rat

**Important Note:**

This product as supplied is intended for research use only, not for use in human, therapeutic or diagnostic applications.



**Picture:**

Tissue/cell: Rat brain ; 4% Paraformaldehyde-fixed and paraffin-embedded;

Antigen retrieval: citrate buffer ( 0.01M, pH 6.0 ), Boiling bathing for 15min; Block endogenous peroxidase by 3% Hydrogen peroxide for 30min; Blocking buffer (normal goat serum,C-0005) at 37°C for 20 min;

Incubation: Anti-Centaurin alpha 1 Polyclonal Antibody, Unconjugated(SL11543R) 1:200, overnight at 4°C, followed by conjugation to the secondary antibody(SP-0023) and DAB(C-0010) staining

