



Rabbit Anti-Ctip1 antibody

SL11544R

Product Name:	Ctip1
Chinese Name:	Blymphocyte白血病/淋巴瘤11/Zinc finger protein856抗体
Alias:	BCL-11A; B cell CLL/lymphoma 11A (zinc finger protein); B cell CLL/lymphoma 11A (zinc finger protein) isoform 2; B cell CLL/lymphoma 11A; B cell lymphoma/leukaemia 11A; B-cell CLL/lymphoma 11A; B-cell lymphoma/leukemia 11A; BC11A_HUMAN; BCL 11A; BCL-11A; BCL11A; BCL11A B cell CLL/lymphoma 11A (zinc finger protein) isoform 1; BCL11A L; BCL11A S; BCL11A XL; BCL11AL; BCL11AS; BCL11AXL; C2H2 type zinc finger protein; COUP TF interacting protein 1; COUP-TF-interacting protein 1; Ctip 1; CTIP1; Ecotropic viral integration site 9; Ecotropic viral integration site 9 homolog; Ecotropic viral integration site 9 protein; Ecotropic viral integration site 9 protein homolog; Evi 9; EVI-9; Evi9; FLJ10173; FLJ34997; HBFQTL5; KIAA1809; Zinc finger protein 856; ZNF856.
Organism Species:	Rabbit
Clonality:	Polyclonal
React Species:	Human,Mouse,Rat,Chicken,Rabbit,
Applications:	WB=1:500-2000ELISA=1:500-1000IHC-P=1:400-800IHC-F=1:400-800ICC=1:100-500IF=1:100-500 (Paraffin sections need antigen repair) not yet tested in other applications. optimal dilutions/concentrations should be determined by the end user.
Molecular weight:	91kDa
Cellular localization:	The nucleuscytoplasmic
Form:	Lyophilized or Liquid
Concentration:	1mg/ml
immunogen:	KLH conjugated synthetic peptide derived from human Ctip1:751-835/835
Lsotype:	IgG
Purification:	affinity purified by Protein A
Storage Buffer:	0.01M TBS(pH7.4) with 1% BSA, 0.03% Proclin300 and 50% Glycerol.
Storage:	Store at -20 °C for one year. Avoid repeated freeze/thaw cycles. The lyophilized antibody is stable at room temperature for at least one month and for greater than a year when kept at -20°C. When reconstituted in sterile pH 7.4 0.01M PBS or diluent of

	antibody the antibody is stable for at least two weeks at 2-4 °C.
PubMed:	PubMed
Product Detail:	<p>This gene encodes a C2H2 type zinc-finger protein by its similarity to the mouse Bcl11a/Evi9 protein. The corresponding mouse gene is a common site of retroviral integration in myeloid leukemia, and may function as a leukemia disease gene, in part, through its interaction with BCL6. During hematopoietic cell differentiation, this gene is down-regulated. It is possibly involved in lymphoma pathogenesis since translocations associated with B-cell malignancies also deregulates its expression. Multiple transcript variants encoding several different isoforms have been found for this gene. [provided by RefSeq, Jul 2008].</p> <p>Function: Functions as a myeloid and B-cell proto-oncogene. May play important roles in leukemogenesis and hematopoiesis. An essential factor in lymphopoiesis, is required for B-cell formation in fetal liver. May function as a modulator of the transcriptional repression activity of ARP1.</p> <p>Subunit: Interacts with TFCOUP1, PIAS3, ARP1 and EAR2</p> <p>Subcellular Location: Cytoplasm. Nucleus. Associates with the nuclear body. Colocalizes with SUMO1 and SENP2 in nuclear speckles.</p> <p>Tissue Specificity: Expressed at high levels in brain, spleen thymus, bone marrow and testis. Expressed in CD34-positive myeloid precursor cells, B-cells, monocytes and megakaryocytes. Expression is tightly regulated during B-cell development.</p> <p>Post-translational modifications: Sumoylated by SUMO1.</p> <p>DISEASE: Note=Chromosomal aberrations involving BCL11A may be a cause of lymphoid malignancies. Translocation t(2;14)(p13;q32.3) causes BCL11A deregulation and amplification.</p> <p>Similarity: Contains 6 C2H2-type zinc fingers.</p> <p>SWISS: Q9H165</p> <p>Gene ID: 53335</p>

Database links:

[Entrez Gene: 53335](#) Human

[Entrez Gene: 14025](#) Mouse

[Omim: 606557](#) Human

[SwissProt: Q9H165](#) Human

[SwissProt: Q9QYE3](#) Mouse

[Unigene: 370549](#) Human

[Unigene: 441102](#) Mouse

[Unigene: 471050](#) Mouse

[Unigene: 53687](#) Mouse

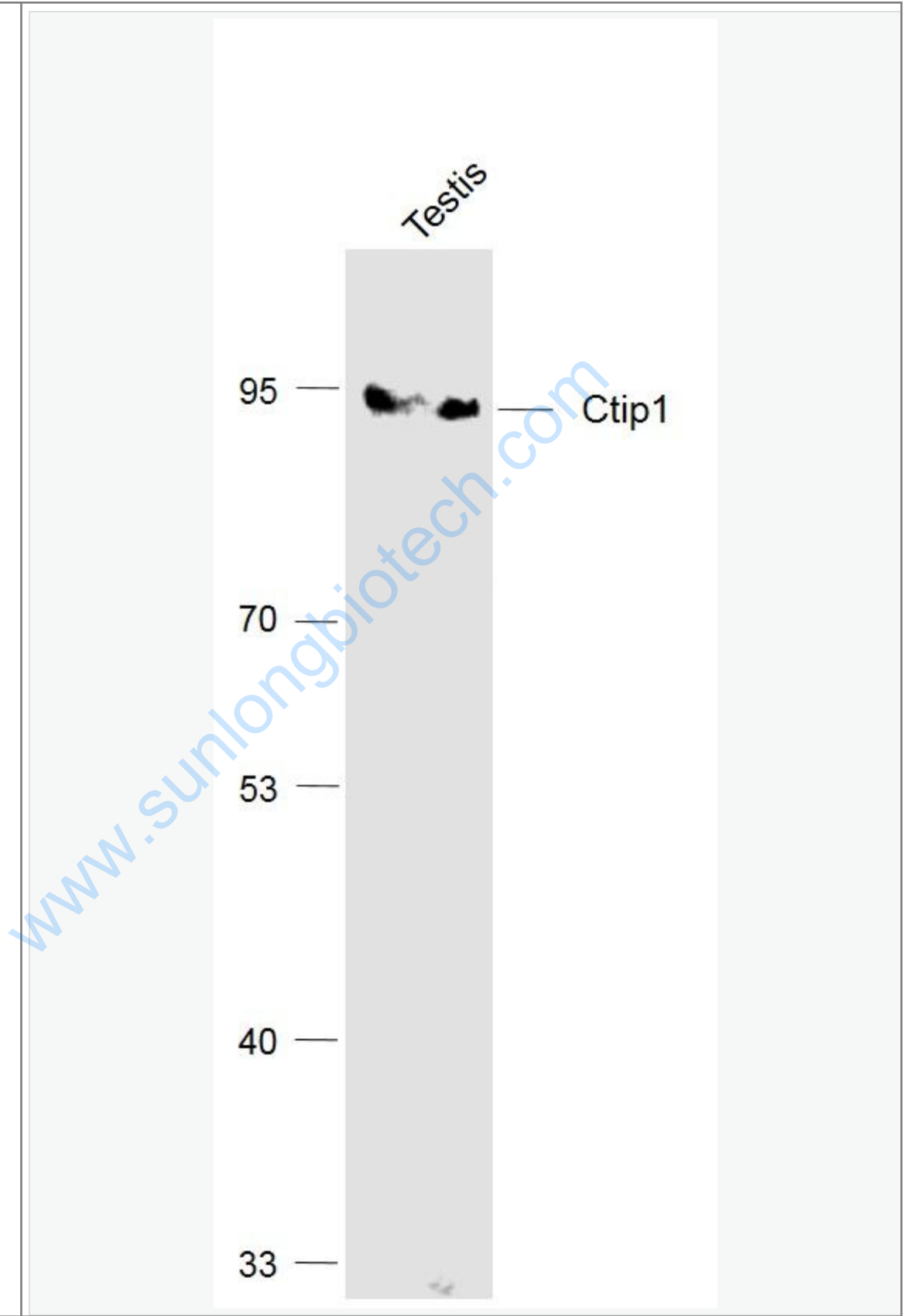
[Unigene: 88824](#) Mouse

Important Note:

This product as supplied is intended for research use only, not for use in human, therapeutic or diagnostic applications.

www.suningbiotech.com

Picture:



Sample:

Testis (Mouse) Lysate at 40 ug

Primary: Anti-Ctip1 (SL11544R) at 1/1000 dilution

Secondary: IRDye800CW Goat Anti-Rabbit IgG at 1/20000 dilution

Predicted band size: 91 kD

Observed band size: 91 kD

www.sunlongbiotech.com