



Rabbit Anti-Gemin 2 antibody

SL11562R

Product Name:	Gemin 2
Chinese Name:	脊髓性肌萎缩症蛋白SMA抗体
Alias:	SMA; Gemin2; Component of gems 2; Gem (nuclear organelle) associated protein 2; Gem associated protein 2; GEMI2_HUMAN; Gemin-2; gemin2; SIP 1; SIP-1; SIP1; SIP1 delta; SIP1-delta ; SMN interacting protein 1; SMN interacting protein 1 delta; SMN-interacting protein 1; Survival interacting protein 1; Survival of motor neuron protein interacting protein 1; Survival of motor neuron protein-interacting protein 1.
Organism Species:	Rabbit
Clonality:	Polyclonal
React Species:	Human,Mouse,Rat,Pig,Horse,Rabbit,
Applications:	WB=1:500-2000ELISA=1:500-1000IHC-P=1:400-800IHC-F=1:400-800ICC=1:100-500IF=1:100-500 (Paraffin sections need antigen repair) not yet tested in other applications. optimal dilutions/concentrations should be determined by the end user.
Molecular weight:	32kDa
Cellular localization:	The nucleuscytoplasmic
Form:	Lyophilized or Liquid
Concentration:	1mg/ml
immunogen:	KLH conjugated synthetic peptide derived from human Gemin 2:101-200/280
Lsotype:	IgG
Purification:	affinity purified by Protein A
Storage Buffer:	0.01M TBS(pH7.4) with 1% BSA, 0.03% Proclin300 and 50% Glycerol.
Storage:	Store at -20 °C for one year. Avoid repeated freeze/thaw cycles. The lyophilized antibody is stable at room temperature for at least one month and for greater than a year when kept at -20°C. When reconstituted in sterile pH 7.4 0.01M PBS or diluent of antibody the antibody is stable for at least two weeks at 2-4 °C.
PubMed:	PubMed
Product Detail:	This gene encodes one of the proteins found in the SMN complex, which consists of several gemin proteins and the protein known as the survival of motor neuron protein. The SMN complex is localized to a subnuclear compartment called gems (gemiini of

coiled bodies) and is required for assembly of spliceosomal snRNPs and for pre-mRNA splicing. This protein interacts directly with the survival of motor neuron protein and it is required for formation of the SMN complex. A knockout mouse targeting the mouse homolog of this gene exhibited disrupted snRNP assembly and motor neuron degeneration. [provided by RefSeq, Aug 2011].

Function:

The SMN complex plays an essential role in spliceosomal snRNP assembly in the cytoplasm and is required for pre-mRNA splicing in the nucleus.

Subunit:

Part of the core SMN complex that contains SMN1, GEMIN2/SIP1, DDX20/GEMIN3, GEMIN4, GEMIN5, GEMIN6, GEMIN7, GEMIN8 and STRAP/UNRIP. Interacts directly with GEMIN5.

Subcellular Location:

Nucleus, gem. Cytoplasm. Note=Localized in subnuclear structures next to coiled bodies, called gems, which are highly enriched in spliceosomal snRNPs. Also found in the cytoplasm.

Similarity:

Belongs to the gemin-2 family.

SWISS:

O14893

Gene ID:

8487

Database links:

[Entrez Gene: 8487](#) Human

[Entrez Gene: 66603](#) Mouse

[Entrez Gene: 84404](#) Rat

[Omim: 602595](#) Human

[SwissProt: O14893](#) Human

[SwissProt: Q9CQQ4](#) Mouse

[SwissProt: Q9QZP1](#) Rat

[Unigene: 652307](#) Human

[Unigene: 35353](#) Mouse

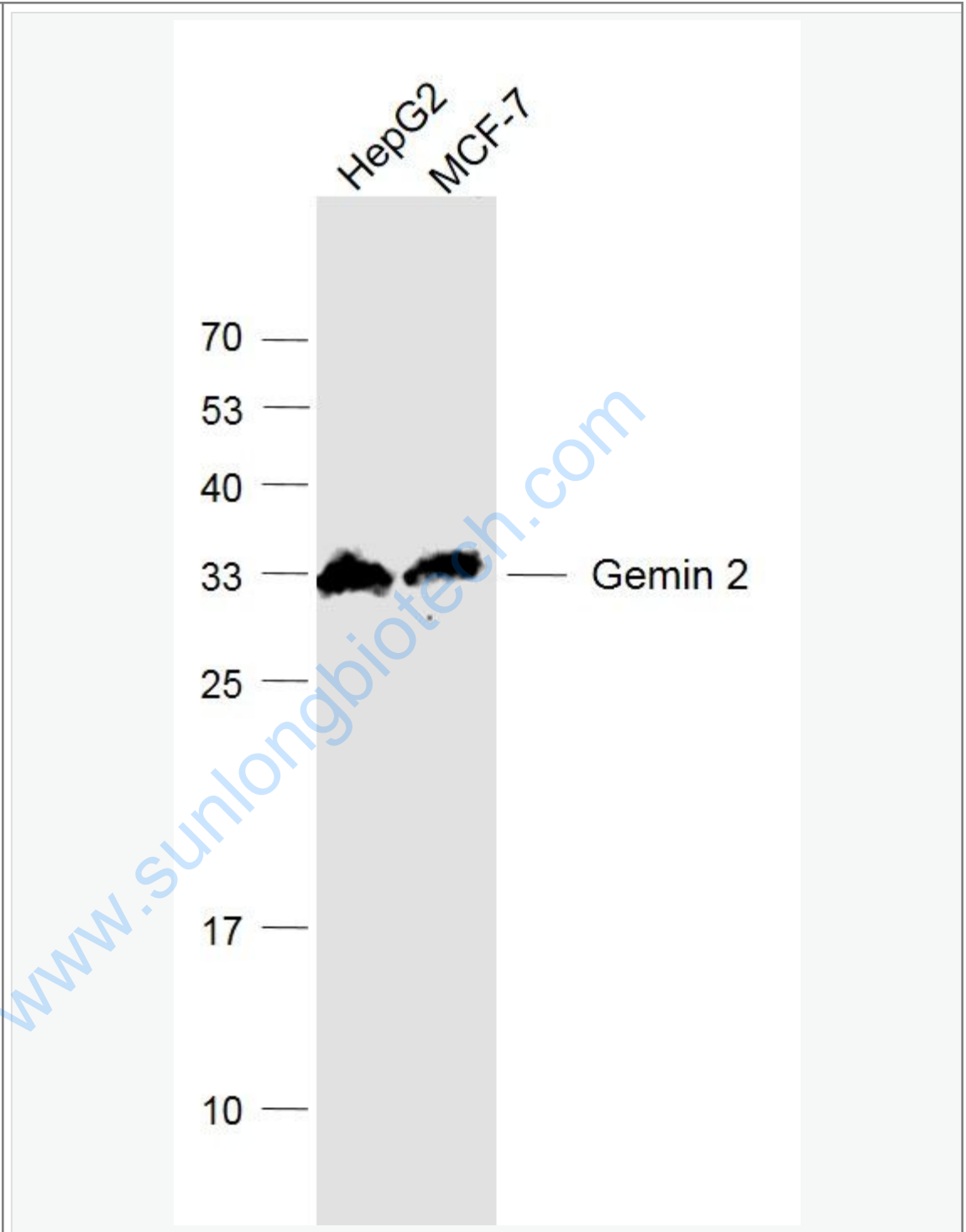
[Unigene: 34143](#) Rat

Important Note:

This product as supplied is intended for research use only, not for use in human, therapeutic or diagnostic applications.

www.sunlongbiotech.com

Picture:



Sample:

HepG2(Human) Cell Lysate at 30 ug

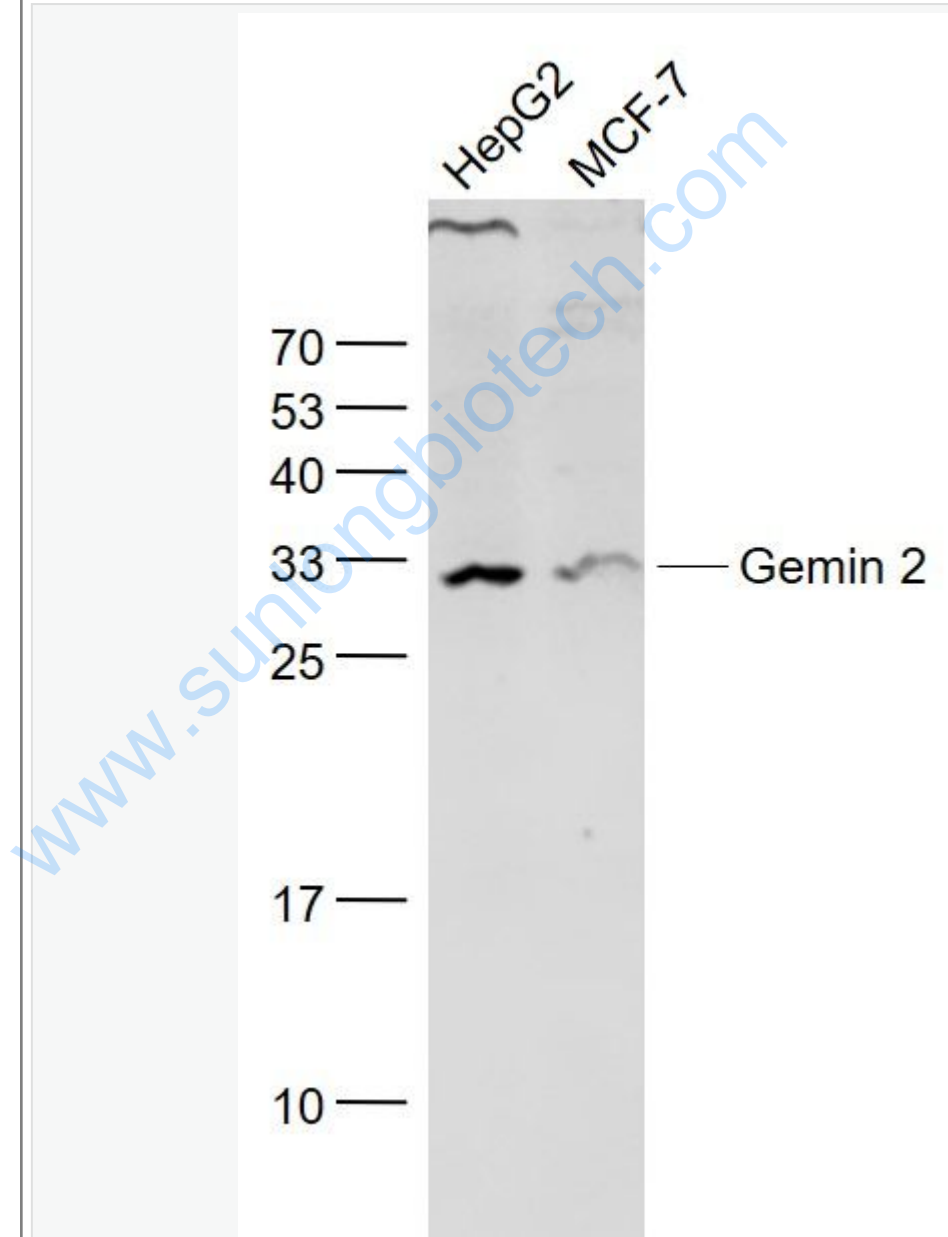
MCF-7(Human) Cell Lysate at 30 ug

Primary: Anti-Gemin 2 (SL11562R) at 1/1000 dilution

Secondary: IRDye800CW Goat Anti-Rabbit IgG at 1/20000 dilution

Predicted band size: 32 kD

Observed band size: 32 kD



Sample:

HepG2(Human) Cell Lysate at 30 ug

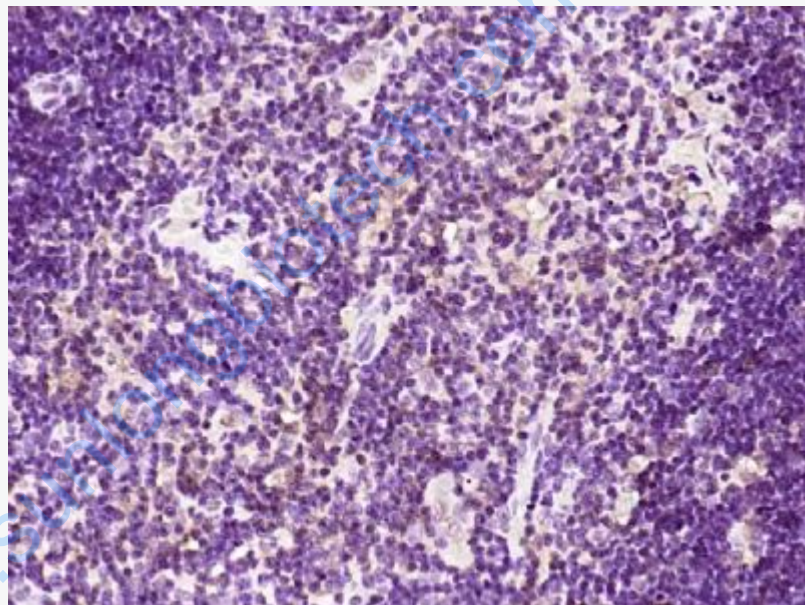
MCF-7(Human) Cell Lysate at 30 ug

Primary: Anti- Gemin 2 (SL11562R) at 1/1000 dilution

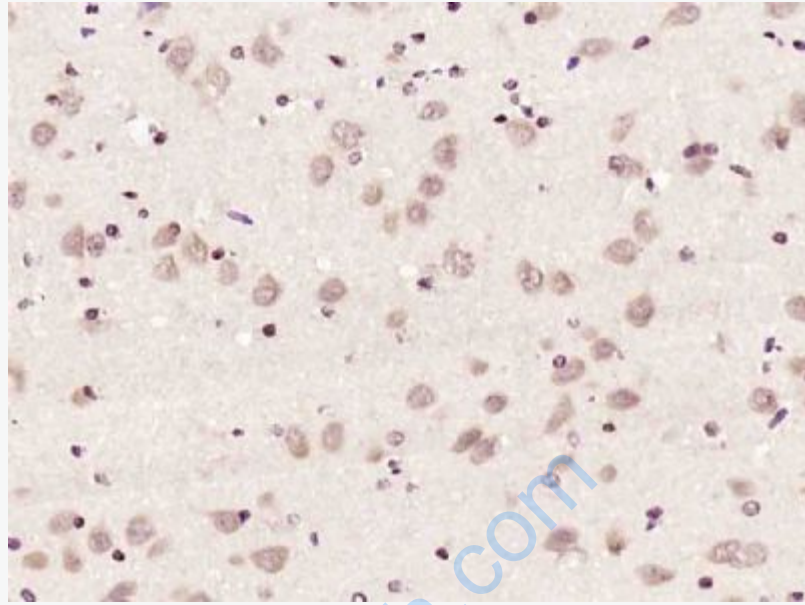
Secondary: IRDye800CW Goat Anti-Rabbit IgG at 1/20000 dilution

Predicted band size: 32 kD

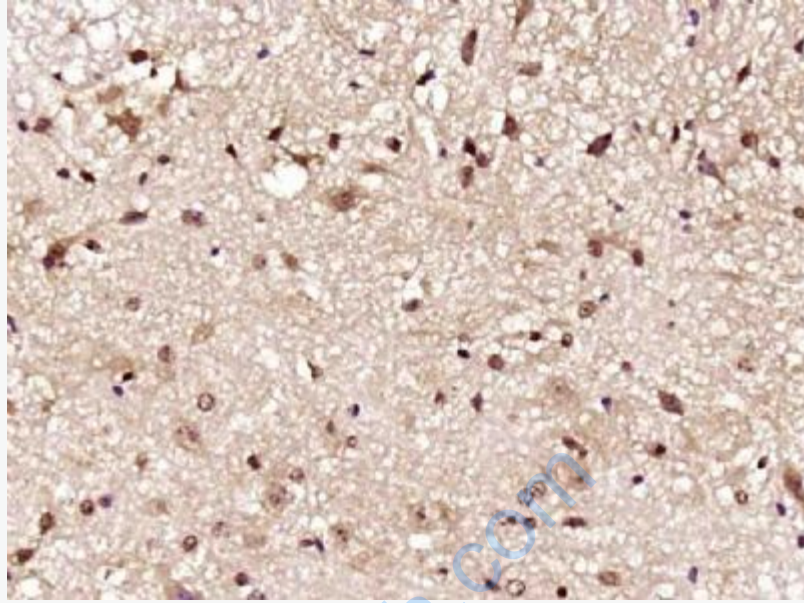
Observed band size: 32 kD



Paraformaldehyde-fixed, paraffin embedded (rat pancreas); Antigen retrieval by boiling in sodium citrate buffer (pH6.0) for 15min; Block endogenous peroxidase by 3% hydrogen peroxide for 20 minutes; Blocking buffer (normal goat serum) at 37°C for 30min; Antibody incubation with (Gemin 2) Polyclonal Antibody, Unconjugated (SL11562R) at 1:200 overnight at 4°C, followed by operating according to SP Kit(Rabbit) (sp-0023) instructions and DAB staining.



Paraformaldehyde-fixed, paraffin embedded (rat brain); Antigen retrieval by boiling in sodium citrate buffer (pH6.0) for 15min; Block endogenous peroxidase by 3% hydrogen peroxide for 20 minutes; Blocking buffer (normal goat serum) at 37°C for 30min; Antibody incubation with (Gemin 2) Polyclonal Antibody, Unconjugated (SL11562R) at 1:200 overnight at 4°C, followed by operating according to SP Kit(Rabbit) (sp-0023) instructions and DAB staining.



Paraformaldehyde-fixed, paraffin embedded (rat spinal cord); Antigen retrieval by boiling in sodium citrate buffer (pH6.0) for 15min; Block endogenous peroxidase by 3% hydrogen peroxide for 20 minutes; Blocking buffer (normal goat serum) at 37°C for 30min; Antibody incubation with (Gemin 2) Polyclonal Antibody, Unconjugated (SL11562R) at 1:200 overnight at 4°C, followed by operating according to SP Kit(Rabbit) (sp-0023) instructions and DAB staining.