



## Rabbit Anti-KIBRA antibody

SL11570R

<b>Product Name:</b>	KIBRA
<b>Chinese Name:</b>	肾脏和脑蛋白抗体
<b>Alias:</b>	HBeAg-binding protein 3; HBEBP36; KIAA0869; KIBRA; Kidney and brain protein; Protein KIBRA; Protein WWC1; WW and C2 domain containing 1; WW C2 and coiled-coil domain containing 1; WW domain-containing protein 1; WWC1; KIBRA_HUMAN.
<b>Organism Species:</b>	Rabbit
<b>Clonality:</b>	Polyclonal
<b>React Species:</b>	Human,Mouse,Rat,Dog,Cow,Rabbit,Sheep,
<b>Applications:</b>	WB=1:500-2000ELISA=1:500-1000IHC-P=1:400-800IHC-F=1:400-800ICC=1:100-500IF=1:100-500 (Paraffin sections need antigen repair) not yet tested in other applications. optimal dilutions/concentrations should be determined by the end user.
<b>Molecular weight:</b>	125kDa
<b>Cellular localization:</b>	The nucleuscytoplasmicThe cell membrane
<b>Form:</b>	Lyophilized or Liquid
<b>Concentration:</b>	1mg/ml
<b>immunogen:</b>	KLH conjugated synthetic peptide derived from human KIBRA:351-450/1113
<b>Lsotype:</b>	IgG
<b>Purification:</b>	affinity purified by Protein A
<b>Storage Buffer:</b>	0.01M TBS(pH7.4) with 1% BSA, 0.03% Proclin300 and 50% Glycerol.
<b>Storage:</b>	Store at -20 °C for one year. Avoid repeated freeze/thaw cycles. The lyophilized antibody is stable at room temperature for at least one month and for greater than a year when kept at -20°C. When reconstituted in sterile pH 7.4 0.01M PBS or diluent of antibody the antibody is stable for at least two weeks at 2-4 °C.
<b>PubMed:</b>	<a href="#">PubMed</a>
<b>Product Detail:</b>	KIBRA is a 1,113 amino acid protein that localizes to the cytoplasm and contains one C2 domain and two WW domains. Expressed in colon, brain, kidney and heart tissue, KIBRA is thought to interact with dendrin and, via this interaction, may play a role in collagen-induced signaling. Additionally, KIBRA, which exists as multiple alternatively

spliced isoforms, is involved in memory performance and in the pathogenesis of Alzheimer's disease. The gene encoding KIBRA maps to human chromosome 5, which contains 181 million base pairs and comprises nearly 6% of the human genome. Deletion of the p arm of chromosome 5 leads to Cri du chat syndrome, while deletion of the q arm or of chromosome 5 altogether is common in therapy-related acute myelogenous leukemias and myelodysplastic syndrome.

**Function:**

KIBRA is a WW domain containing protein, first identified by yeast 2-hybrid analysis of a human brain cDNA expression library. Gene expression studies have shown that KIBRA is expressed in memory-related brain structures including the hippocampus (dentate gyrus and the CA1 region) and the temporal lobe, 2 key regions for memory, and that the expression of specific KIBRA alleles is significantly associated with memory performance.

**Subunit:**

Homodimer. Interacts with DDN. Interacts with DYNLL1 and histone H3. The interaction with DYNLL1 is mandatory for the recruitment and transactivation functions of ESR1 or DYNLL1 to the target chromatin and the interaction with histone H3 ensures proper regulatory interaction of WWC1-DYNLL1-ESR1 complexes with target chromatin. Interacts (via WW domains) with DDR1 (via PPxY motif) in a collagen-regulated manner. Interacts with PRKCZ (via the protein kinase domain). Forms a tripartite complex with DDR1 and PRKCZ, but predominantly in the absence of collagen. Interacts (via the ADDV motif) with INADL (via PDZ domain 8). Interacts (via WW domains) with SYNPO (via PPxY motifs). Interacts with NF2 and SNX4.

**Subcellular Location:**

Cytoplasm. Cytoplasm, perinuclear region. Nucleus. Cell projection, ruffle membrane. Note=Co-localizes with PRKCZ in the perinuclear region.

**Tissue Specificity:**

Expressed in mammary epithelial cells and breast cancer cell lines. Found in the luminal epithelium surrounding the ducts in the normal breast. In the brain, expressed in somatodendritic compartment of neurons in the cortex and hippocampus and in the cerebellum it is found in the Purkinje cells and some granule cells (at protein level). Detected in brain, heart, colon and kidney. In the kidney, expressed in glomerular podocytes, in some tubules and in the collecting duct.

**Similarity:**

Belongs to the WWC family. KIBRA subfamily.  
Contains 1 C2 domain.  
Contains 2 WW domains.

**SWISS:**  
Q8IX03

**Gene ID:**  
23286

**Database links:**

[Entrez Gene: 23286](#)Human

[Omin: 610533](#)Human

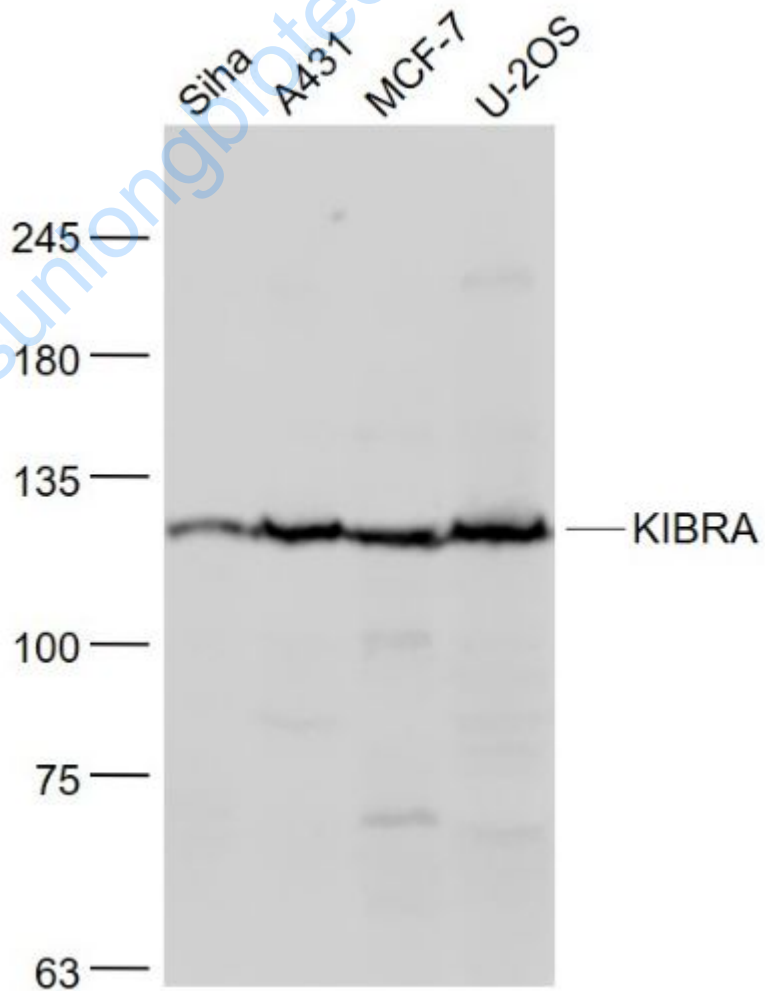
[SwissProt: Q8IX03](#)Human

[Unigene: 484047](#)Human

**Important Note:**

This product as supplied is intended for research use only, not for use in human, therapeutic or diagnostic applications.

**Picture:**



Sample:

Siha(Human) Cell Lysate at 30 ug

A431(Human) Cell Lysate at 30 ug

MCF-7(Human) Cell Lysate at 30 ug

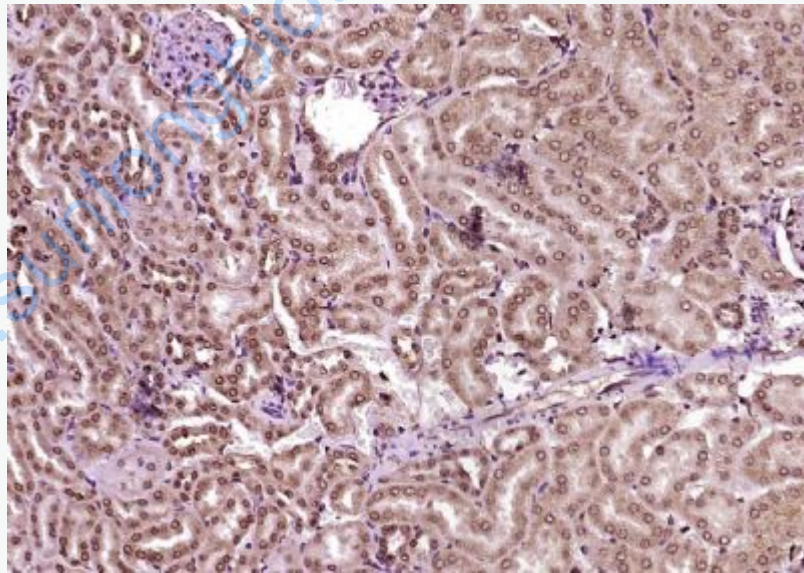
U-2OS(Human) Cell Lysate at 30 ug

Primary: Anti- KIBRA (SL11570R) at 1/1000 dilution

Secondary: IRDye800CW Goat Anti-Rabbit IgG at 1/20000 dilution

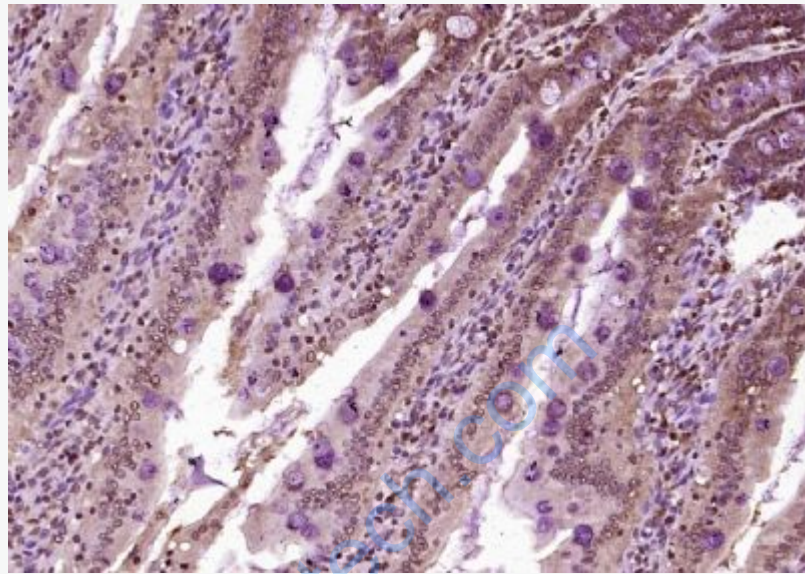
Predicted band size: 125 kD

Observed band size: 125 kD

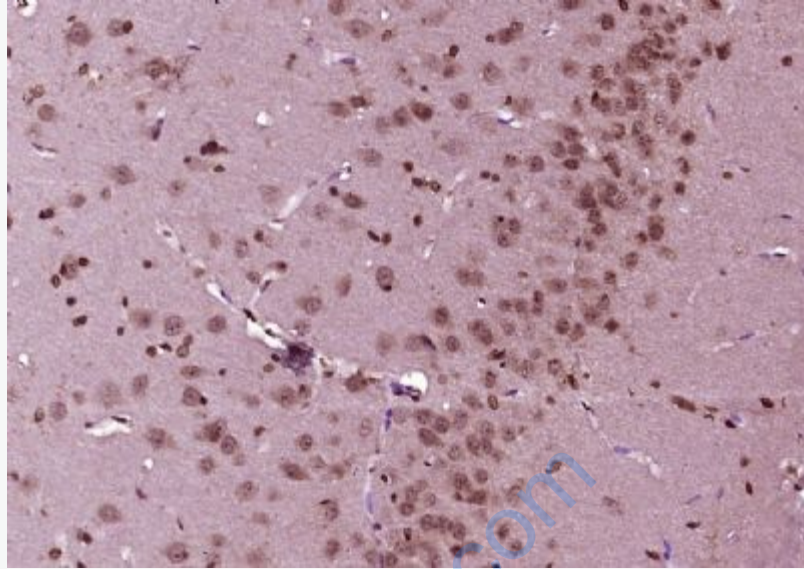


Paraformaldehyde-fixed, paraffin embedded (Mouse kidney); Antigen retrieval by boiling in sodium citrate buffer (pH6.0) for 15min; Block endogenous peroxidase by 3% hydrogen peroxide for 20 minutes; Blocking buffer (normal goat serum) at 37°C for 30min; Antibody incubation with (KIBRA) Polyclonal Antibody, Unconjugated (SL11570R) at 1:400 overnight at 4°C, followed by operating according to SP

Kit(Rabbit) (sp-0023) instructions and DAB staining.



Paraformaldehyde-fixed, paraffin embedded (Rat small intestine); Antigen retrieval by boiling in sodium citrate buffer (pH6.0) for 15min; Block endogenous peroxidase by 3% hydrogen peroxide for 20 minutes; Blocking buffer (normal goat serum) at 37°C for 30min; Antibody incubation with (KIBRA) Polyclonal Antibody, Unconjugated (SL11570R) at 1:400 overnight at 4°C, followed by operating according to SP Kit(Rabbit) (sp-0023) instructions and DAB staining.



Paraformaldehyde-fixed, paraffin embedded (Rat brain); Antigen retrieval by boiling in sodium citrate buffer (pH6.0) for 15min; Block endogenous peroxidase by 3% hydrogen peroxide for 20 minutes; Blocking buffer (normal goat serum) at 37°C for 30min; Antibody incubation with (KIBRA) Polyclonal Antibody, Unconjugated (SL11570R) at 1:400 overnight at 4°C, followed by operating according to SP Kit(Rabbit) (sp-0023) instructions and DAB staining.