



## Rabbit Anti-RND2/Rho7 antibody

SL11583R

<b>Product Name:</b>	RND2/Rho7
<b>Chinese Name:</b>	Rho家族GTP酶2抗体
<b>Alias:</b>	ARHN; Rho 7; Rho family GTPase 2; Rho N; Rho related GTP-binding protein RhoN; Rho-related GTP-binding protein Rho7; Rho-related GTP-binding protein RhoN; Rho7; RhoN; Rnd 2; Rnd2; RND2 HUMAN.
<b>Organism Species:</b>	Rabbit
<b>Clonality:</b>	Polyclonal
<b>React Species:</b>	Human,Mouse,Rat,Dog,Pig,Cow,Horse,Rabbit,Sheep,
<b>Applications:</b>	WB=1:500-2000ELISA=1:500-1000IHC-P=1:400-800IHC-F=1:400-800ICC=1:100-500IF=1:100-500 (Paraffin sections need antigen repair) not yet tested in other applications. optimal dilutions/concentrations should be determined by the end user.
<b>Molecular weight:</b>	25kDa
<b>Cellular localization:</b>	cytoplasmicThe cell membrane
<b>Form:</b>	Lyophilized or Liquid
<b>Concentration:</b>	1mg/ml
<b>immunogen:</b>	KLH conjugated synthetic peptide derived from human RND2:1-80/227
<b>Lsotype:</b>	IgG
<b>Purification:</b>	affinity purified by Protein A
<b>Storage Buffer:</b>	0.01M TBS(pH7.4) with 1% BSA, 0.03% Proclin300 and 50% Glycerol.
<b>Storage:</b>	Store at -20 °C for one year. Avoid repeated freeze/thaw cycles. The lyophilized antibody is stable at room temperature for at least one month and for greater than a year when kept at -20°C. When reconstituted in sterile pH 7.4 0.01M PBS or diluent of antibody the antibody is stable for at least two weeks at 2-4 °C.
<b>PubMed:</b>	<a href="#">PubMed</a>
<b>Product Detail:</b>	The Ras p21 family of guanine nucleotide proteins has been widely studied in view of its apparent role in signal transduction pathways and high frequency of mutations in human malignancies. It is now clear, however, that the Ras proteins (H-, K- and N-Ras p21) are members of a much larger superfamily of related proteins. Six members of this family, Rap 1A, Rap 1B, Rap 2, R-Ras, Ral A and Ral B, exhibit approximately 50%

amino acid homology to Ras. The six mammalian Rho proteins (Rho A, B, C, G, 7 and 8) are approximately 30% homologous to Ras and are expressed in a wide range of cell types. Both Ras p21 and Rho p21, as well as other members of the Ras superfamily, contain a carboxy-terminal CAAX sequence (C, cysteine; A, aliphatic amino acid; X, any amino acid) which in the case of Ras has been shown to be essential for correct localization and function.

**Function:**

May be specifically involved in neuronal and hepatic functions. Is a C3 toxin-insensitive member of the Rho subfamily.

**Subunit:**

Interacts with the Rho-GAP domain of RACGAP1. Interacts with UBXD5.

**Subcellular Location:**

Cytoplasmic vesicle, secretory vesicle, acrosome membrane; Lipid-anchor; Cytoplasmic side (Potential). Note=Colocalizes with RACGAP1 in Golgi-derived proacrosomal vesicles and the acrosome.

**Tissue Specificity:**

Highly expressed in testis.

**Similarity:**

Belongs to the small GTPase superfamily. Rho family.

**SWISS:**

P52198

**Gene ID:**

8153

**Database links:**

[Entrez Gene: 8153](#)Human

[Entrez Gene: 11858](#)Mouse

[Entrez Gene: 303553](#)Rat

[Omim: 601555](#)Human

[SwissProt: P52198](#)Human

[SwissProt: Q9QYM5](#)Mouse

[Unigene: 603111](#)Human

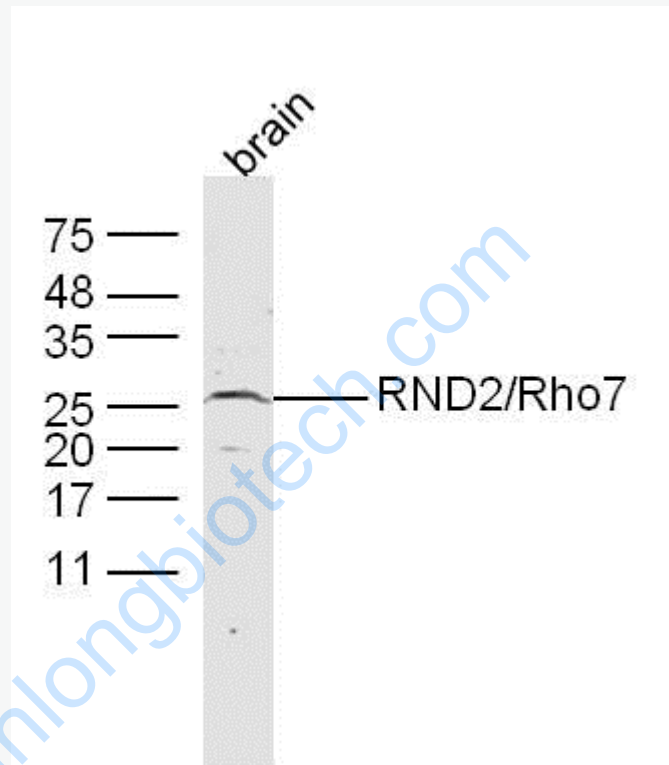
[Unigene: 378883](#)Mouse

[Unigene: 22162](#)Rat

**Important Note:**

This product as supplied is intended for research use only, not for use in human, therapeutic or diagnostic applications.

**Picture:**



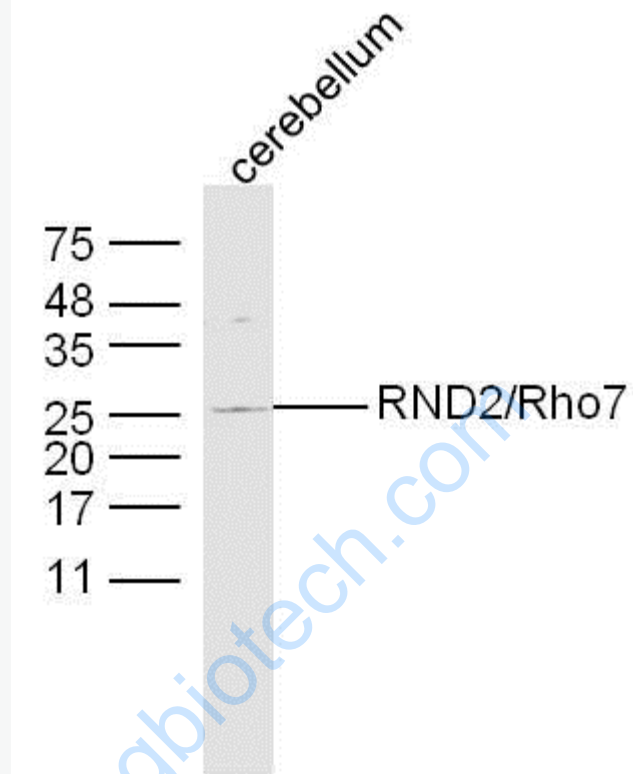
Sample: Brain (Mouse) Lysate at 40 ug

Primary: Anti-RND2/Rho7 (SL11583R) at 1/300 dilution

Secondary: IRDye800CW Goat Anti-Rabbit IgG at 1/20000 dilution

Predicted band size: 25 kD

Observed band size: 26 kD



Sample: Cerebellum (Mouse) Lysate at 40 ug

Primary: Anti-RND2/Rho7 (SL11583R) at 1/300 dilution

Secondary: IRDye800CW Goat Anti-Rabbit IgG at 1/20000 dilution

Predicted band size: 25 kD

Observed band size: 26 kD