



Rabbit Anti-LRP5L antibody

SL11590R

Product Name:	LRP5L
Chinese Name:	低密度Lipoprotein受体5样蛋白抗体
Alias:	Low-density lipoprotein receptor-related protein 5-like protein; LRP-5-like; LRP5L; GP330; LRP5L_HUMAN.
Organism Species:	Rabbit
Clonality:	Polyclonal
React Species:	Human,Mouse,Rat,Chicken,Sheep,
Applications:	WB=1:500-2000ELISA=1:500-1000IHC-P=1:400-800IHC-F=1:400-800ICC=1:100-500IF=1:100-500 (Paraffin sections need antigen repair) not yet tested in other applications. optimal dilutions/concentrations should be determined by the end user.
Molecular weight:	28kDa
Cellular localization:	The nucleuscytoplasmic
Form:	Lyophilized or Liquid
Concentration:	1mg/ml
immunogen:	KLH conjugated synthetic peptide derived from human LRP5L:101-200/252
Lsotype:	IgG
Purification:	affinity purified by Protein A
Storage Buffer:	0.01M TBS(pH7.4) with 1% BSA, 0.03% Proclin300 and 50% Glycerol.
Storage:	Store at -20 °C for one year. Avoid repeated freeze/thaw cycles. The lyophilized antibody is stable at room temperature for at least one month and for greater than a year when kept at -20°C. When reconstituted in sterile pH 7.4 0.01M PBS or diluent of antibody the antibody is stable for at least two weeks at 2-4 °C.
PubMed:	PubMed
Product Detail:	Members of the LDL receptor gene family, including LDLR (low density lipo-protein receptor), LRP5 (low density lipoprotein related proteins), Megalin (also designated GP330), VLDLR (very low density lipoprotein receptor) and ApoER2, are characterized by a cluster of cysteine-rich class A repeats, epidermal growth factor (EGF)-like repeats, YWTD repeats and an O-linked sugar domain. Of the known family members, LRP5 is most closely related to LRP1. However, LRP5 has a unique

organization of EGF and LDLR repeats compared to other LDLR family members and likely represents a new category in this family. LRP is expressed in rat tibia, specifically in areas of the bone that are involved in remodeling. LRP5 is a Wnt coreceptor that binds to Axin and regulates the canonical Wnt signaling pathway. LRP5 affects bone mass accrual during growth. Mutations in LRP5 cause the autosomal recessive disorder osteoporosis-pseudoglioma syndrome (OPPG). LRP5L is a related protein that exists as two isoforms produced by alternative splicing.

Similarity:

Contains 5 LDL-receptor class B repeats.

SWISS:

A4QPB2

Gene ID:

91355

Database links:

[Entrez Gene: 91355](#)Human

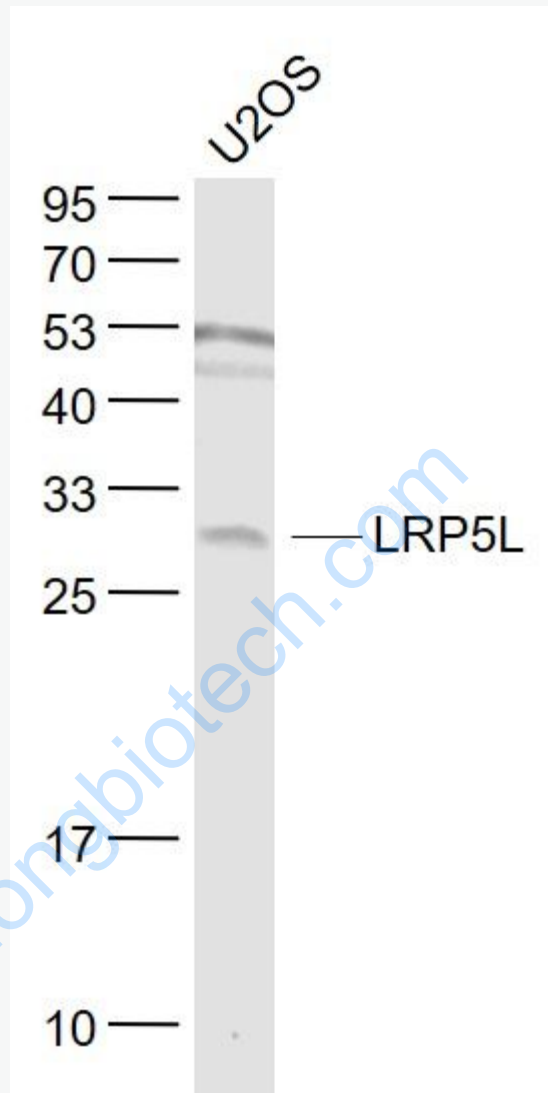
[SwissProt: A4QPB2](#)Human

[Unigene: 634058](#)Human

Important Note:

This product as supplied is intended for research use only, not for use in human, therapeutic or diagnostic applications.

Picture:



Sample:

U2OS(Human) Cell Lysate at 30 ug

Primary: Anti- LRP5L (SL11590R) at 1/1000 dilution

Secondary: IRDye800CW Goat Anti-Rabbit IgG at 1/20000 dilution

Predicted band size: 28 kD

Observed band size: 28 kD