



Rabbit Anti-NAT8 + NAT8B antibody

SL11591R

Product Name:	NAT8 + NAT8B
Chinese Name:	N-乙酰转移酶8抗体
Alias:	NAT8+NAT8B; Camello-like protein 1; NAT8; NAT8_HUMAN; Probable N-acetyltransferase 8; Camello like protein 2; Camello-like protein 2; CML2; Hcm12; N acetyltransferase 8B; NAT8B; NAT8B_HUMAN; NAT8BP; Probable N acetyltransferase 8B; Probable N-acetyltransferase 8B.
Organism Species:	Rabbit
Clonality:	Polyclonal
React Species:	Human,Mouse,Rat,Dog,Horse,
Applications:	WB=1:500-2000ELISA=1:500-1000IHC-P=1:400-800IHC-F=1:400-800ICC=1:100-500IF=1:100-500 (Paraffin sections need antigen repair) not yet tested in other applications. optimal dilutions/concentrations should be determined by the end user.
Molecular weight:	26kDa
Cellular localization:	The cell membrane
Form:	Lyophilized or Liquid
Concentration:	1mg/ml
immunogen:	KLH conjugated synthetic peptide derived from human NAT8:141-227/227
Lsotype:	IgG
Purification:	affinity purified by Protein A
Storage Buffer:	0.01M TBS(pH7.4) with 1% BSA, 0.03% Proclin300 and 50% Glycerol.
Storage:	Store at -20 °C for one year. Avoid repeated freeze/thaw cycles. The lyophilized antibody is stable at room temperature for at least one month and for greater than a year when kept at -20°C. When reconstituted in sterile pH 7.4 0.01M PBS or diluent of antibody the antibody is stable for at least two weeks at 2-4 °C.
PubMed:	PubMed
Product Detail:	NAT8 gene, isolated using the differential display method to detect tissue-specific genes, is specifically expressed in kidney and liver. The encoded protein shows amino acid sequence similarity to N-acetyltransferases. A similar protein in Xenopus affects cell adhesion and gastrulation movements, and may be localized in the secretory

pathway. A highly similar paralog is found in a cluster with this gene. [provided by RefSeq, Sep 2008].

NAT8B protein encoded by this gene is highly similar to the N-acetyltransferase 8 (NAT8) gene product, which is a kidney and liver protein with homology to bacterial acetyltransferases involved in drug resistance. This gene is localized on chromosome 2 in the vicinity of the NAT8 gene and may represent a pseudogene of NAT8. This gene contains two polymorphic nonsense mutations that disrupt the active site of the protein. The full-length product of this gene contains a complete acetyltransferase domain and is identical in length to NAT8. [provided by RefSeq, Jul 2008].

Function:

Plays a role in regulation of gastrulation.

Subcellular Location:

Membrane.

Tissue Specificity:

Expression is restricted to liver and kidney.

Similarity:

Belongs to the camello family.

Contains 1 N-acetyltransferase domain.

SWISS:

Q9UHE5

Gene ID:

9027

Database links:

[Entrez Gene: 9027](#) Human

[Entrez Gene: 51471](#) Human

[NCBI: NP_057431](#) Human

[Omim: 606716](#) Human

[Omim: 608190](#) Human

[SwissProt: Q9UHE5](#) Human

[SwissProt: Q9UHF3](#) Human

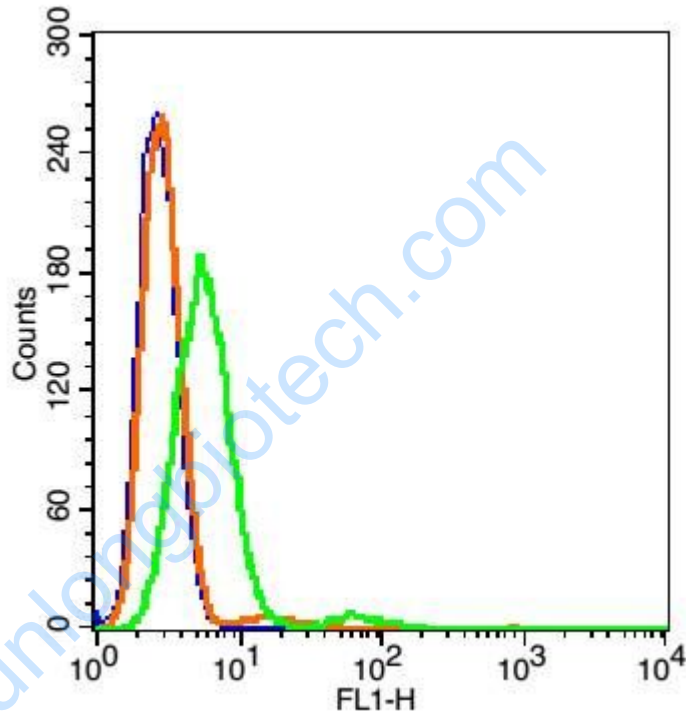
[Unigene: 14637](#) Human

[Unigene: 728429](#) Human

Important Note:

This product as supplied is intended for research use only, not for use in human, therapeutic or diagnostic applications.

Picture:



Blank control: Hepg2 Cells(blue).

Primary Antibody: Rabbit Anti-NAT8 + NAT8B/AF488 Conjugated antibody (SL11591R), Dilution: 5 μ g in 100 μ L 1X PBS containing 0.5% BSA;

Isotype Control Antibody: Rabbit IgG/FITC(orange) ,used under the same conditions.