



Rabbit Anti-RTP3 antibody

SL11619R

Product Name:	RTP3
Chinese Name:	受体Transporter3抗体
Alias:	LTM1; Receptor (chemosensory) transporter protein 3; Receptor transporter protein 3; Receptor-transporting protein 3; RTP3; RTP3_HUMAN; TMEM7; Transmembrane protein 7.
Organism Species:	Rabbit
Clonality:	Polyclonal
React Species:	Human,Mouse,
Applications:	WB=1:500-2000ELISA=1:500-1000Flow-Cyt=0.2ug/test not yet tested in other applications. optimal dilutions/concentrations should be determined by the end user.
Molecular weight:	27kDa
Cellular localization:	The cell membrane
Form:	Lyophilized or Liquid
Concentration:	1mg/ml
immunogen:	KLH conjugated synthetic peptide derived from human RTP3:21-120/232
Lsotype:	IgG
Purification:	affinity purified by Protein A
Storage Buffer:	0.01M TBS(pH7.4) with 1% BSA, 0.03% Proclin300 and 50% Glycerol.
Storage:	Store at -20 °C for one year. Avoid repeated freeze/thaw cycles. The lyophilized antibody is stable at room temperature for at least one month and for greater than a year when kept at -20°C. When reconstituted in sterile pH 7.4 0.01M PBS or diluent of antibody the antibody is stable for at least two weeks at 2-4 °C.
PubMed:	PubMed
Product Detail:	Members of the RTP (receptor transporter proteins) family have recently been discovered to influence bitter taste receptor expression in addition to inducing the expression of mammalian odorant receptors. RTP3 is a 232 amino acid single-pass type III membrane protein belonging to the TMEM7 family. Unlike other RTP proteins, RTP3 is not expressed in olfactory neurons but is expressed predominantly in liver. RTP3 is involved in the functional expression of bitter taste receptors and suppresses

cell proliferation, and is also found in human circumvallate papillae and testis (regions where bitter taste receptors are expressed). The gene encoding RTP3 maps to human chromosome 3p21.31 within C3CER1 (chromosome 3 common eliminated region 1), which is frequently eliminated in chromosomal deletions of solid tumors.

Function:

Expressed predominantly in the liver.

Subcellular Location:

Membrane; Single-pass type III membrane protein

Tissue Specificity:

Belongs to the TMEM7 family.

Similarity:

Belongs to the TMEM7 family.

SWISS:

Q9BQQ7

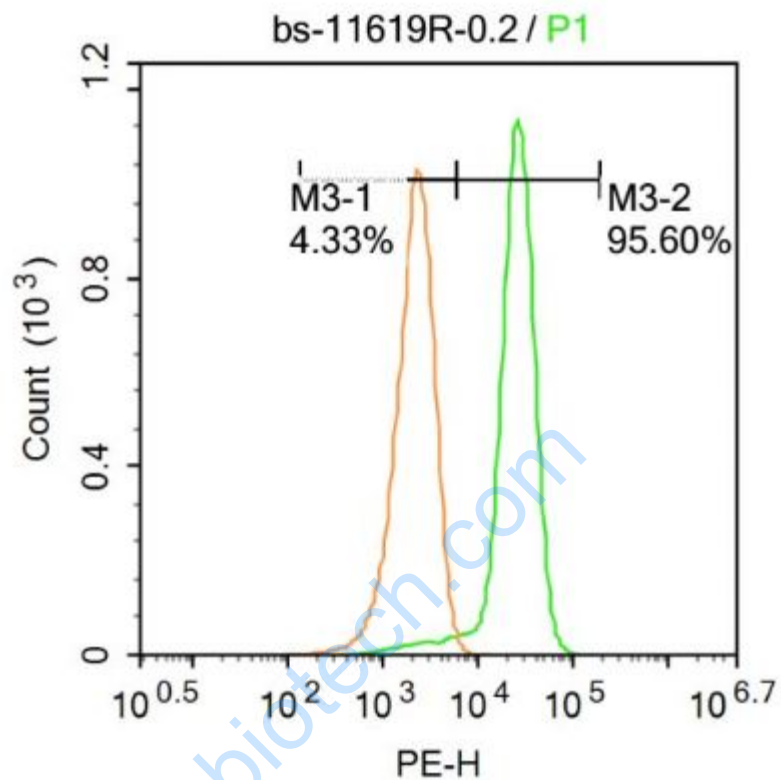
Gene ID:

83597

Database links:

Important Note:

This product as supplied is intended for research use only, not for use in human, therapeutic or diagnostic applications.



Picture:

Blank control: Molt-4.

Primary Antibody (green line): Rabbit Anti-RTP3 antibody (SL11619R)

Dilution: $1\mu\text{g} / 10^6$ cells;

Isotype Control Antibody (orange line): Rabbit IgG .

Secondary Antibody : Goat anti-rabbit IgG-PE

Dilution: $1\mu\text{g} / \text{test}$.

Protocol

The cells were incubated in 5%BSA to block non-specific protein-protein interactions for 30 min at room temperature .Cells stained with Primary Antibody for 30 min at room temperature. The secondary antibody used for 40 min at room

	temperature. Acquisition of 20,000 events was performed.
--	--

www.sunlongbiotech.com