



Rabbit Anti-WBP2 antibody

SL11625R

Product Name:	WBP2
Chinese Name:	WBP2蛋白抗体
Alias:	MGC18269; WBP 2; WBP-2; Wbp2; WBP2_HUMAN; WW domain binding protein 2; WW domain-binding protein 2.
Organism Species:	Rabbit
Clonality:	Polyclonal
React Species:	Human,Mouse,Rat,Dog,Pig,Cow,Horse,Sheep,
Applications:	WB=1:500-2000ELISA=1:500-1000IHC-P=1:400-800IHC-F=1:400-800ICC=1:100-500IF=1:100-500 (Paraffin sections need antigen repair) not yet tested in other applications. optimal dilutions/concentrations should be determined by the end user.
Molecular weight:	28kDa
Form:	Lyophilized or Liquid
Concentration:	1mg/ml
immunogen:	KLH conjugated synthetic peptide derived from human WBP2:1-100/261
Lsotype:	IgG
Purification:	affinity purified by Protein A
Storage Buffer:	0.01M TBS(pH7.4) with 1% BSA, 0.03% Proclin300 and 50% Glycerol.
Storage:	Store at -20 °C for one year. Avoid repeated freeze/thaw cycles. The lyophilized antibody is stable at room temperature for at least one month and for greater than a year when kept at -20°C. When reconstituted in sterile pH 7.4 0.01M PBS or diluent of antibody the antibody is stable for at least two weeks at 2-4 °C.
PubMed:	PubMed
Product Detail:	The globular WW domain is composed of 38 to 40 semiconserved amino acids shared by proteins of diverse functions including structural, regulatory, and signaling proteins. The domain is involved in mediating protein-protein interactions through the binding of polyproline ligands. This gene encodes a WW domain binding protein, which binds to the WW domain of Yes kinase-associated protein by its PY motifs. The function of this protein has not been determined. [provided by RefSeq, Jul 2008]

Subunit:

Binds to the WW domain of YAP1, WWP1 and WWP2. Interacts with NEDD4.

Tissue Specificity:

Ubiquitous.

Similarity:

Contains 1 GRAM domain.

SWISS:

Q969T9

Gene ID:

23558

Database links:

[Entrez Gene: 23558](#)Human

[Entrez Gene: 22378](#)Mouse

[Entrez Gene: 192645](#)Rat

[Omim: 606962](#)Human

[SwissProt: Q969T9](#)Human

[SwissProt: P97765](#)Mouse

[SwissProt: Q8R478](#)Rat

[Unigene: 514489](#)Human

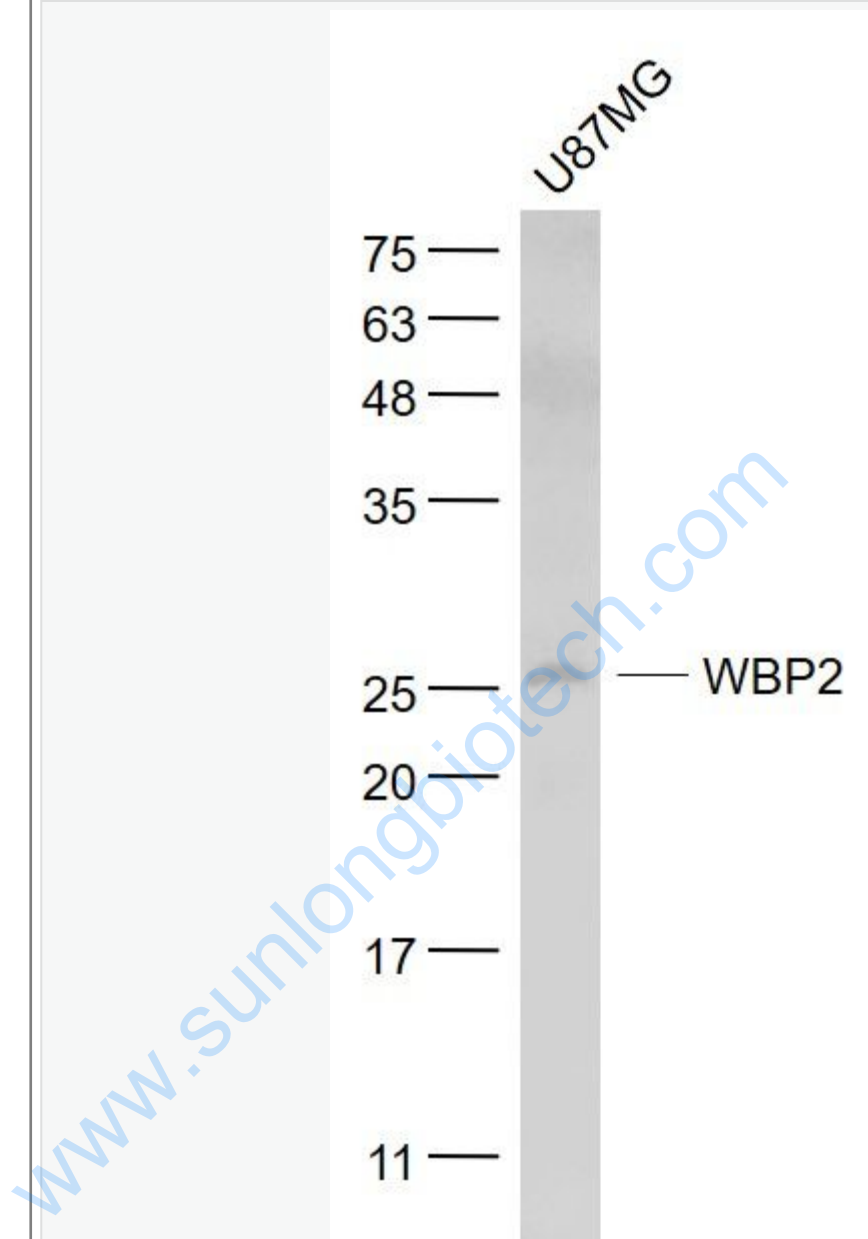
[Unigene: 284792](#)Mouse

[Unigene: 198920](#)Rat

Important Note:

This product as supplied is intended for research use only, not for use in human, therapeutic or diagnostic applications.

Picture:



Sample:

U87MG(Human) Cell Lysate at 30 ug

Primary: Anti- WBP2 (SL11625R) at 1/1000 dilution

Secondary: IRDye800CW Goat Anti-Rabbit IgG at 1/20000 dilution

Predicted band size: 28 kD

	Observed band size: 26 kD
--	---------------------------

www.sunlongbiotech.com