



Rabbit Anti-LZIC antibody

SL11638R

Product Name:	LZIC
Chinese Name:	LZIC蛋白抗体
Alias:	Leucine zipper and CTNNBIP1 domain containing protein; Leucine zipper and ICAT homologous domain containing protein; leucine zipper domain and ICAT homologous domain containing; LZIC antibodyprotein LZIC; LZIC_HUMAN.
Organism Species:	Rabbit
Clonality:	Polyclonal
React Species:	Human,Mouse,Rat,Chicken,Dog,Pig,Cow,Horse,Rabbit,Sheep,
Applications:	WB=1:500-2000ELISA=1:500-1000IHC-P=1:400-800IHC-F=1:400-800ICC=1:100-500IF=1:100-500 (Paraffin sections need antigen repair) not yet tested in other applications. optimal dilutions/concentrations should be determined by the end user.
Molecular weight:	21kDa
Cellular localization:	The nucleuscytoplasmic
Form:	Lyophilized or Liquid
Concentration:	1mg/ml
immunogen:	KLH conjugated synthetic peptide derived from human LZIC:31-130/190
Lsotype:	IgG
Purification:	affinity purified by Protein A
Storage Buffer:	0.01M TBS(pH7.4) with 1% BSA, 0.03% Proclin300 and 50% Glycerol.
Storage:	Store at -20 °C for one year. Avoid repeated freeze/thaw cycles. The lyophilized antibody is stable at room temperature for at least one month and for greater than a year when kept at -20°C. When reconstituted in sterile pH 7.4 0.01M PBS or diluent of antibody the antibody is stable for at least two weeks at 2-4 °C.
PubMed:	PubMed
Product Detail:	LZIC is a 190 amino acid protein that belongs to the CTNNBIP1 family. Ubiquitously expressed, LZIC is found at highest levels in kidney and is upregulated in a few gastric carcinomas. The gene encoding LZIC maps to human chromosome 1, which spans 260 million base pairs, contains over 3,000 genes and comprises nearly 8% of the human genome. Chromosome 1 houses a large number of disease-associated genes, including

those that are involved in familial adenomatous polyposis, Stickler syndrome, Parkinson's disease, Gaucher disease, schizophrenia and Usher syndrome. Aberrations in chromosome 1 are found in a variety of cancers, including head and neck cancer, malignant melanoma and multiple myeloma.

Function:

LZIC belongs to the CTNNBIP1 family. It is ubiquitously expressed with highest levels in kidney. LZIC is up-regulated in several cases of gastric cancers.

Subunit:

Does not interact with CTNNB1

Tissue Specificity:

Ubiquitously expressed, with highest levels in kidney. Up-regulated in several cases of gastric cancers.

Similarity:

Belongs to the CTNNBIP1 family.

SWISS:

Q8WZA0

Gene ID:

84328

Database links:

[Entrez Gene: 419445](#)Chicken

[Entrez Gene: 84328](#)Human

[Entrez Gene: 69151](#)Mouse

[Entrez Gene: 366507](#)Rat

[Entrez Gene: 550045](#)Xenopus tropicalis

[Entrez Gene: 436871](#)Zebrafish

[Omim: 610458](#)Human

[SwissProt: Q5ZKW2](#)Chicken

[SwissProt: Q8WZA0](#)Human

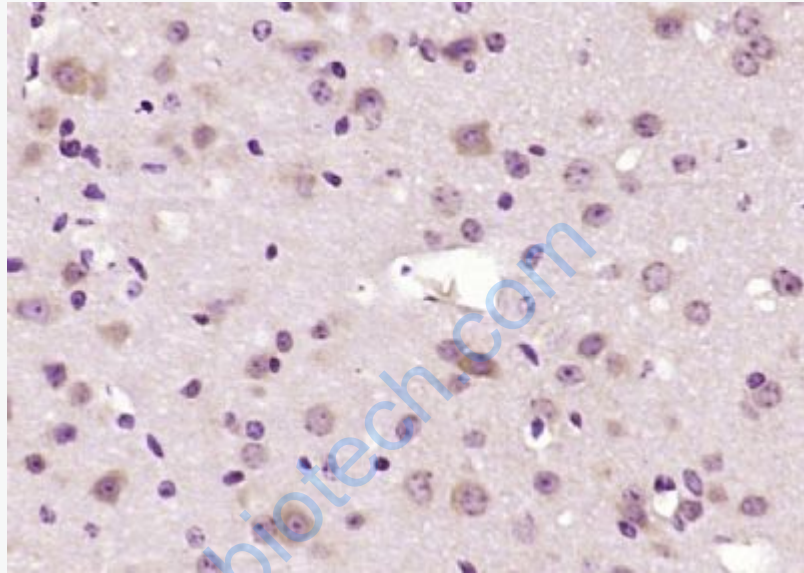
[SwissProt: Q8K3C3](#)Mouse

[SwissProt: Q5PQN7](#)Rat

[SwissProt: Q28D79](#)Xenopus tropicalis

Important Note:

This product as supplied is intended for research use only, not for use in human, therapeutic or diagnostic applications.



Picture:

Paraformaldehyde-fixed, paraffin embedded (mouse brain); Antigen retrieval by boiling in sodium citrate buffer (pH6.0) for 15min; Block endogenous peroxidase by 3% hydrogen peroxide for 20 minutes; Blocking buffer (normal goat serum) at 37°C for 30min; Antibody incubation with (LZIC) Polyclonal Antibody, Unconjugated (SL11638R) at 1:200 overnight at 4°C, followed by operating according to SP Kit(Rabbit) (sp-0023) instructions and DAB staining.